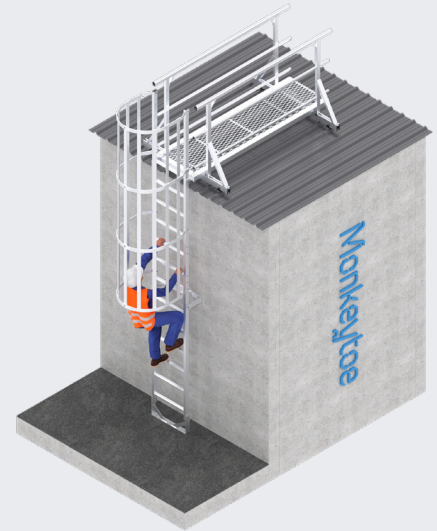


LADDERS

Monkeytoe Caged Ladder with Walkoff CODE: LD02W

PRODUCT DESCRIPTION

Permanent caged access ladder system with walkoff kit that provides safe and easy access to elevated areas with ladder stiles to extend 1000mm or more above landing surface.



TYPICAL USES / APPLICATIONS

- Access requirements with heights that don't exceed 6000mm. For heights above this we recommend a caged ladder with mid-landing (see spec sheet).
- Rooftop access
- Plant maintenance platforms
- Ceiling spaces
- Industrial tank access
- Hospitals, office blocks, sports centre

CHARACTERISTICS / ADVANTAGES

- Unique rung profile design makes ladder comfortable and easy to climb
- Low maintenance and neat appearance
- Modular design for fast and easy install
- Proprietary product with engineering, and pre-configured to code compliance dimensions
- High level of safety and confidence for maintenance personal
- Single person use, 150kg rated
- Stress load tested – 1.8kN applied at 75°

TECHNICAL DATA / MATERIALS

- All componentry and accessories manufactured from high grade structural aluminium
- Product can be powder coated
- Fixing requirements:
 - Steel purlin
 - 2 x M10 S/S bolts OR
 - 2 x M8 toggle bolts OR
 - 3 x 14G tek screws (2mm min purlin thickness)
 - Steel structure
 - 2 x M10 S/S bolts
 - Concrete (Min 25MPa)
 - 2 x (12mm x 100) tru-bolt OR
 - 2 x (10mm x 100) screw bolt
 - Brick
 - 2 x (10 x 100) screw bolt
 - Composite panel
 - 2 x 10mm through bolt with spreader plate on rear, OR
 - 2 x M8 toggle bolts

TESTS

APPROVALS / STANDARDS

- Structural design action B1
- AS/NZS 1170 Standards Australia / New Zealand (Relevant parts)
- Aluminium Structures, Part 1: Limit State Design AS/NZS 1664.1 Standards Australia / New Zealand NZS/AS 1657

PRODUCT SPECIFICATION SHEET

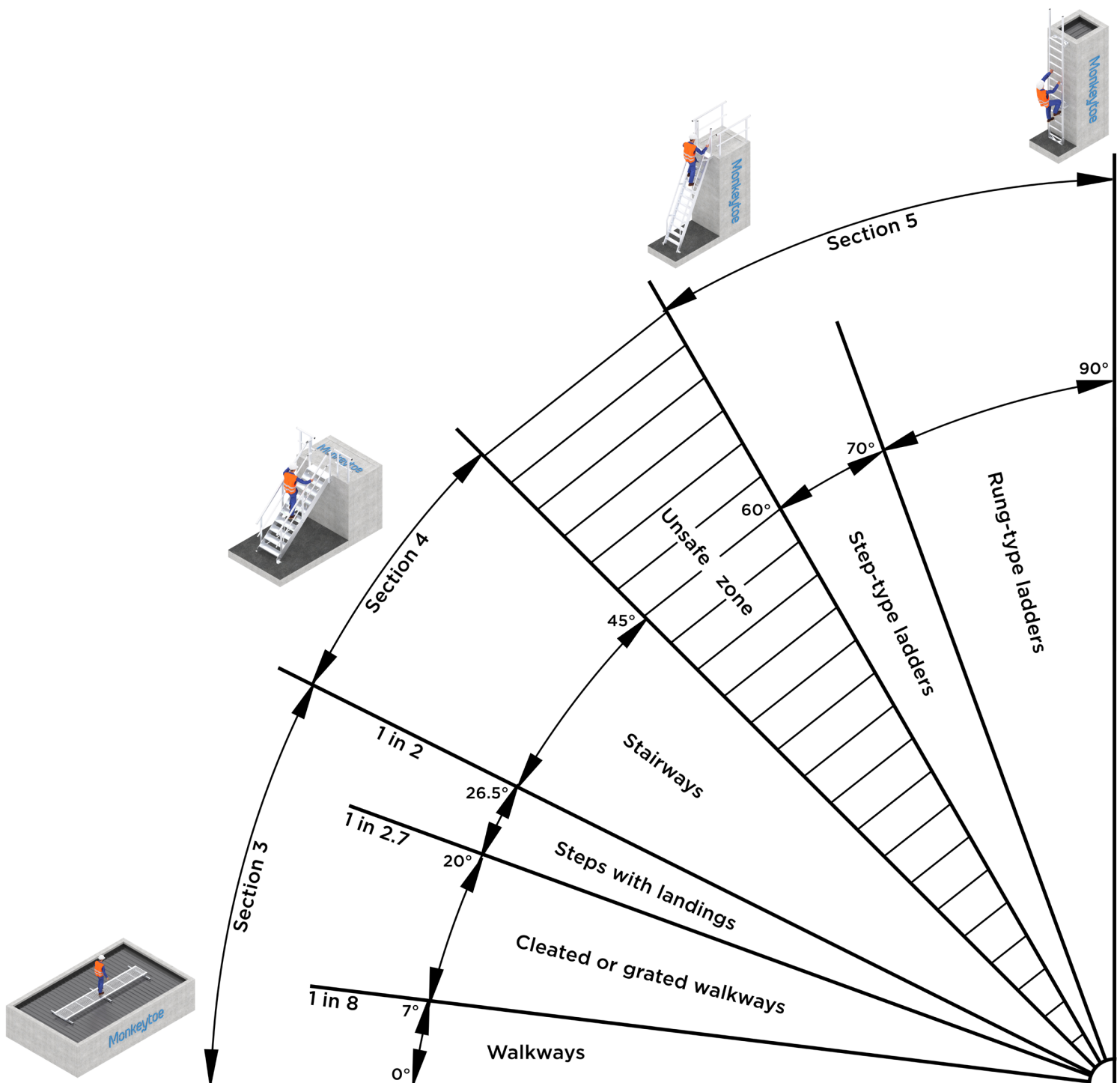
WARRANTY

- 15 years materials and 2 years install

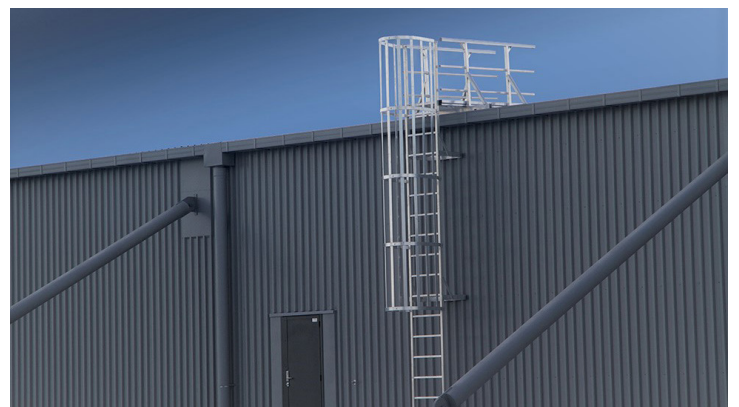
MAINTENANCE

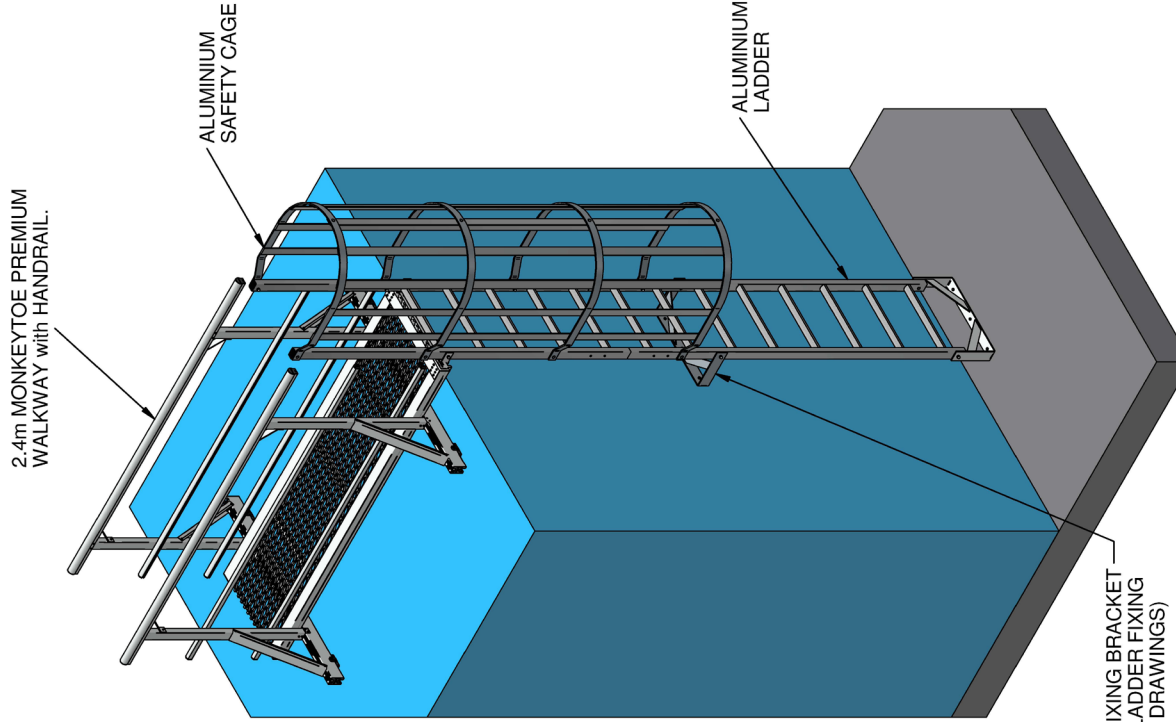
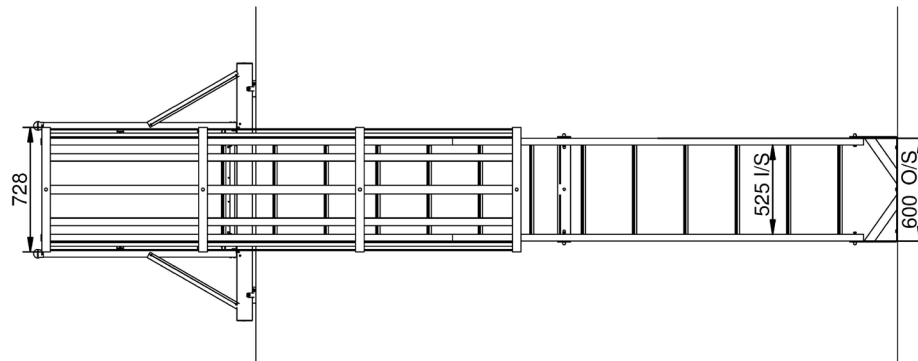
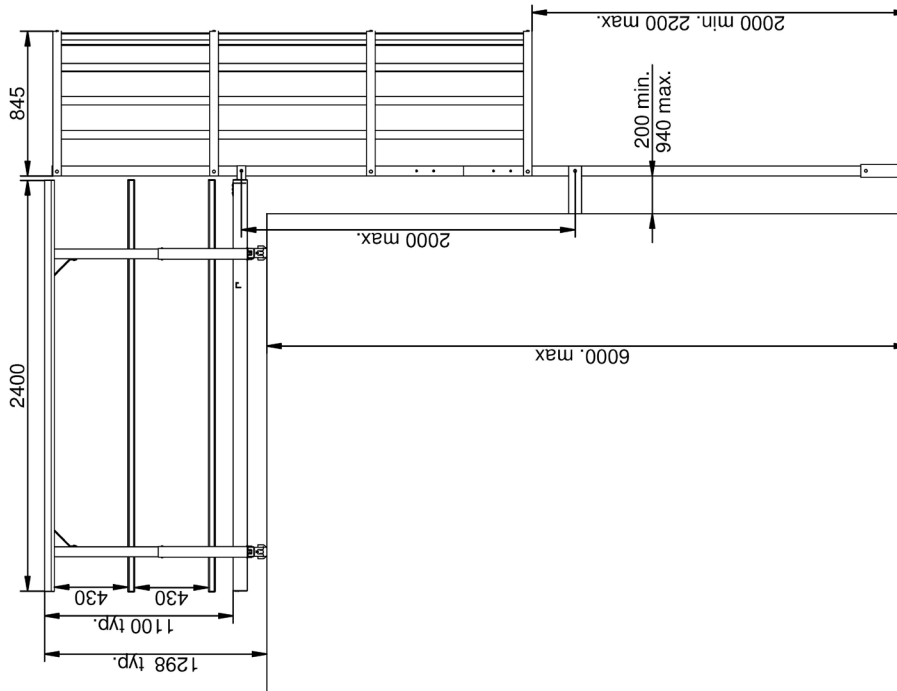
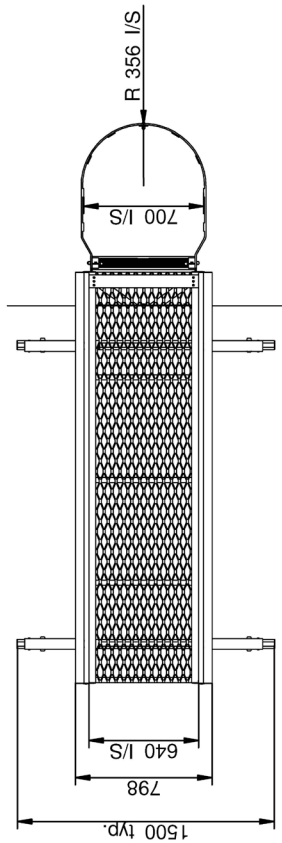
- It is recommended that fixed ladders are included in the standard 'building warrant of fitness' inspections.
- All damage or loose fixings to be reported immediately to asset manager or building owner for correction.

REFERENCE



PRODUCT IMAGES



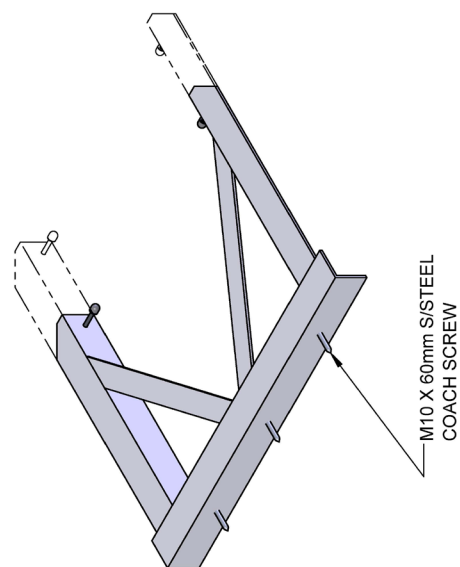
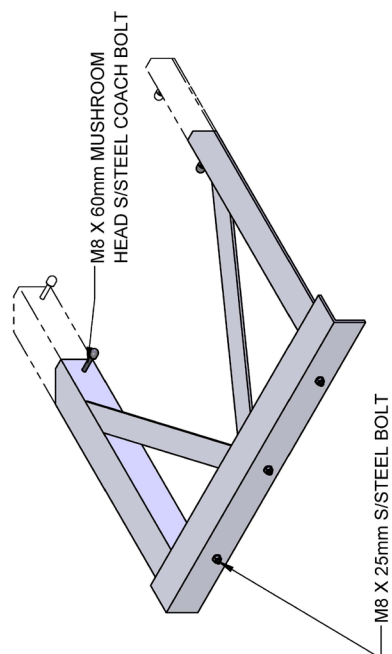


Caged Ladder with Walkoff		MONKEYTOE	
DWG No: 2004-LAD-CG-03	12/06/2018	SHEET 1 OF 1	
DO NOT SCALE		SCALE: 1:30	REV:01
DIMENSIONS IN MILLIMETERS		A3	

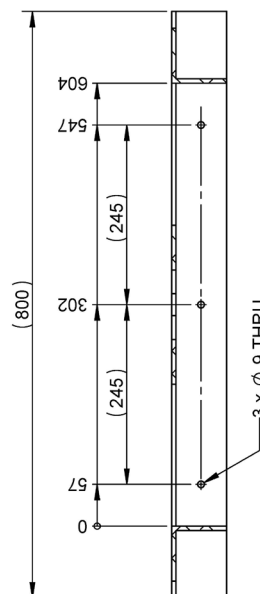
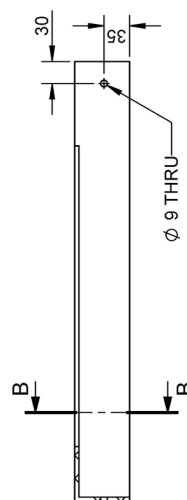
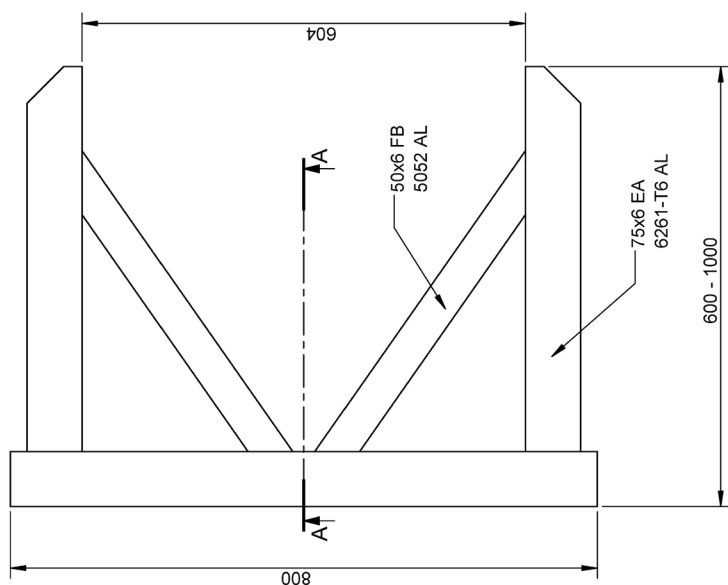
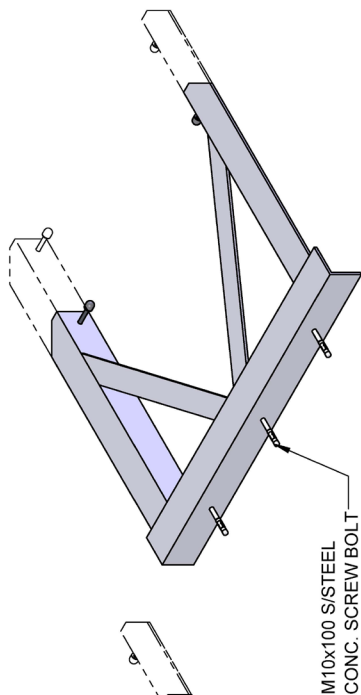
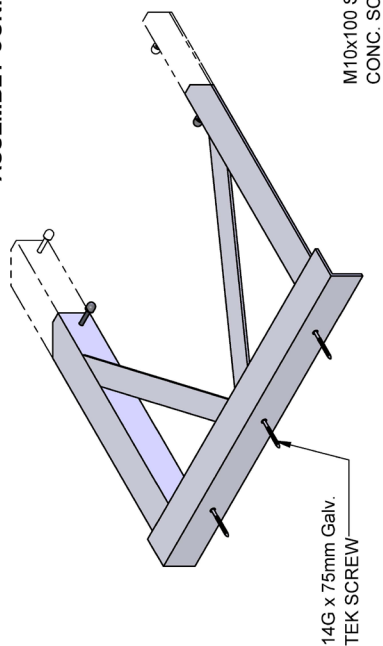
Monkeytoe
EVERYTHING BETTER
 0800 658 637 - www.monkeytoe.co.nz

WORKING LOAD LIMIT: 150kg

NOTES:
 DESIGNED IN ACCORDANCE WITH
 - AS/NZS 1170
 - AS/NZS 1657:2018
 - AS/NZS 1892:1996
 - B1 & B2 DURABILITY CODES
 - RELEVANT STATUTORY OHS CODES OF PRACTICE



ASSEMBLY CONFIGURATIONS




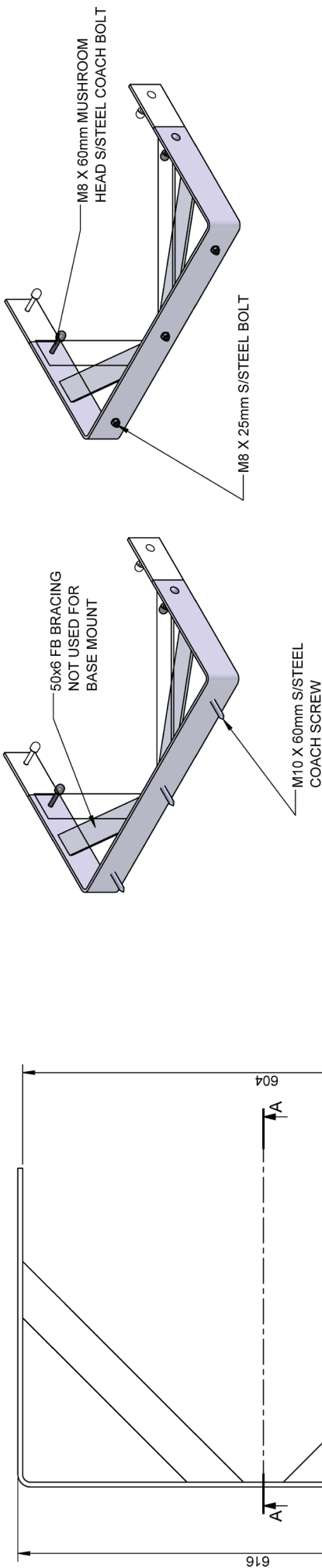
SECTION B-B

Monkeytoe

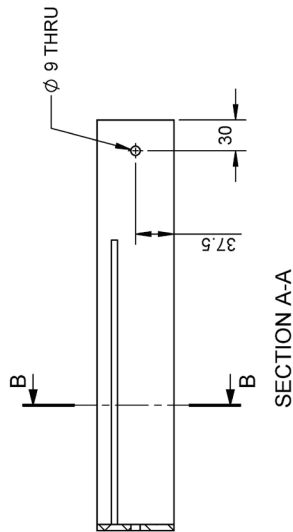
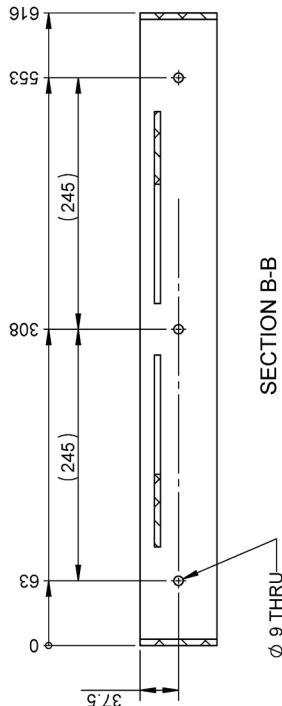
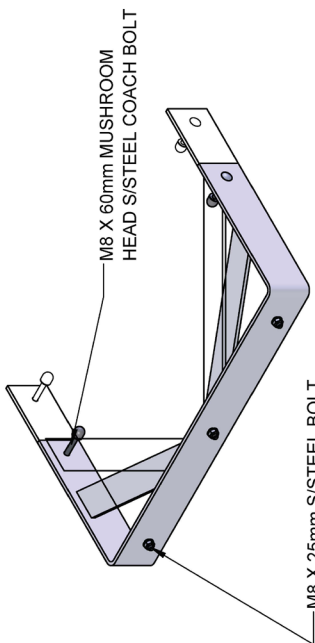
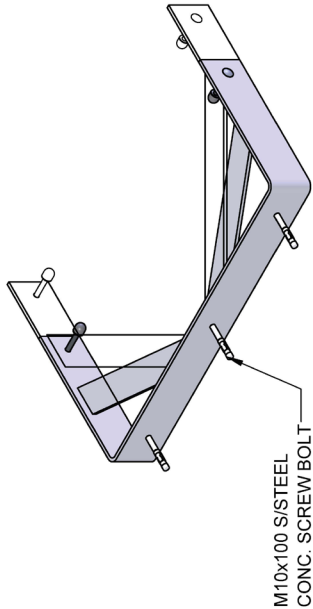
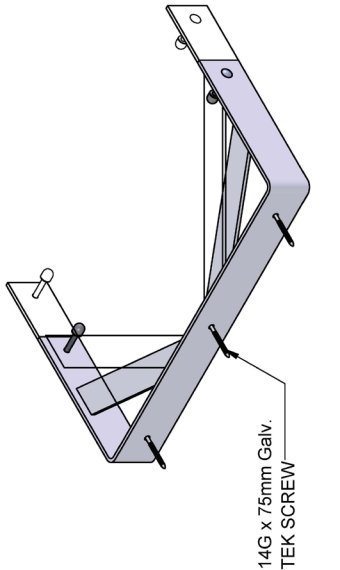
EVERYTHING BETTER
0800 658 637 - www.monkeytoe.co.nz

SECTION A-A

LADDER BRACKET - 600-1000mm			
MONKEYTOE			
DWG No:	LD421.600-1000	01/05/2015	
	SHEET 1 OF 1		A3
	SCALE 1:7		REV:02
DO NOT SCALE	DIMENSIONS IN MILLIMETERS		



ASSEMBLY CONFIGURATIONS



Monkeytoe

EVERYTHING BETTER
0800 658 637 - www.monkeytoe.co.nz

LADDER BRACKET - 280-400mm	
MONKEYTOE	
DWG No: LD421.280-400	01/05/2018
SHEET 1 OF 1	A3
DO NOT SCALE	SCALE 1:5
DIMENSIONS IN MILLIMETERS	