

### LADDERS

## Monkeytoe Caged Ladder with Mid-landing and Walkoff CODE: LD03

#### PRODUCT DESCRIPTION

Permanent caged ladder system with mid/change of direction landing and walkoff kit that provides safe and easy access to elevated areas with ladder stiles to extend 1000mm or more above landing surface.



#### TYPICAL USES / APPLICATIONS

- Access requirements with heights that don't exceed 6000mm
- Rooftop access
- Plant maintenance platforms
- Ceiling spaces
- Industrial tank access
- Hospitals, office blocks, sports centre

#### CHARACTERISTICS / ADVANTAGES

- Unique rung profile design makes ladder comfortable and easy to climb
- Low maintenance and neat appearance
- Modular design for fast and easy install
- Proprietary product with engineering, and pre-configured to code compliance dimensions
- High level of safety and confidence for maintenance personnel
- Single person use, 150kg rated
- Stress load tested - 1.8kN applied at 75°

#### TECHNICAL DATA / MATERIALS

- All componentry and accessories manufactured from high grade structural aluminium
- Product can be powder coated
- Fixing requirements:
  - Steel purlin
    - 2 x M10 S/S bolts OR
    - 2 x M8 toggle bolts OR
    - 3 x 14G tek screws (2mm min purlin thickness)
  - Steel structure
    - 2 x M10 S/S bolts
  - Concrete (Min 25MPa)
    - 2 x (12mm x 100) tru-bolt OR
    - 2 x (10mm x 100) screw bolt
  - Brick
    - 2 x (10 x 100) screw bolt
  - Composite panel
    - 2 x 10mm through bolt with spreader plate on rear, OR
    - 2 x M8 toggle bolts

#### TESTS

#### APPROVALS / STANDARDS

- Structural design action B1
- AS/NZS 1170 Standards Australia / New Zealand (Relevant parts)
- Aluminium Structures, Part 1: Limit State Design AS/NZS 1664.1 Standards Australia / New Zealand NZS/AS 1657

## PRODUCT SPECIFICATION SHEET

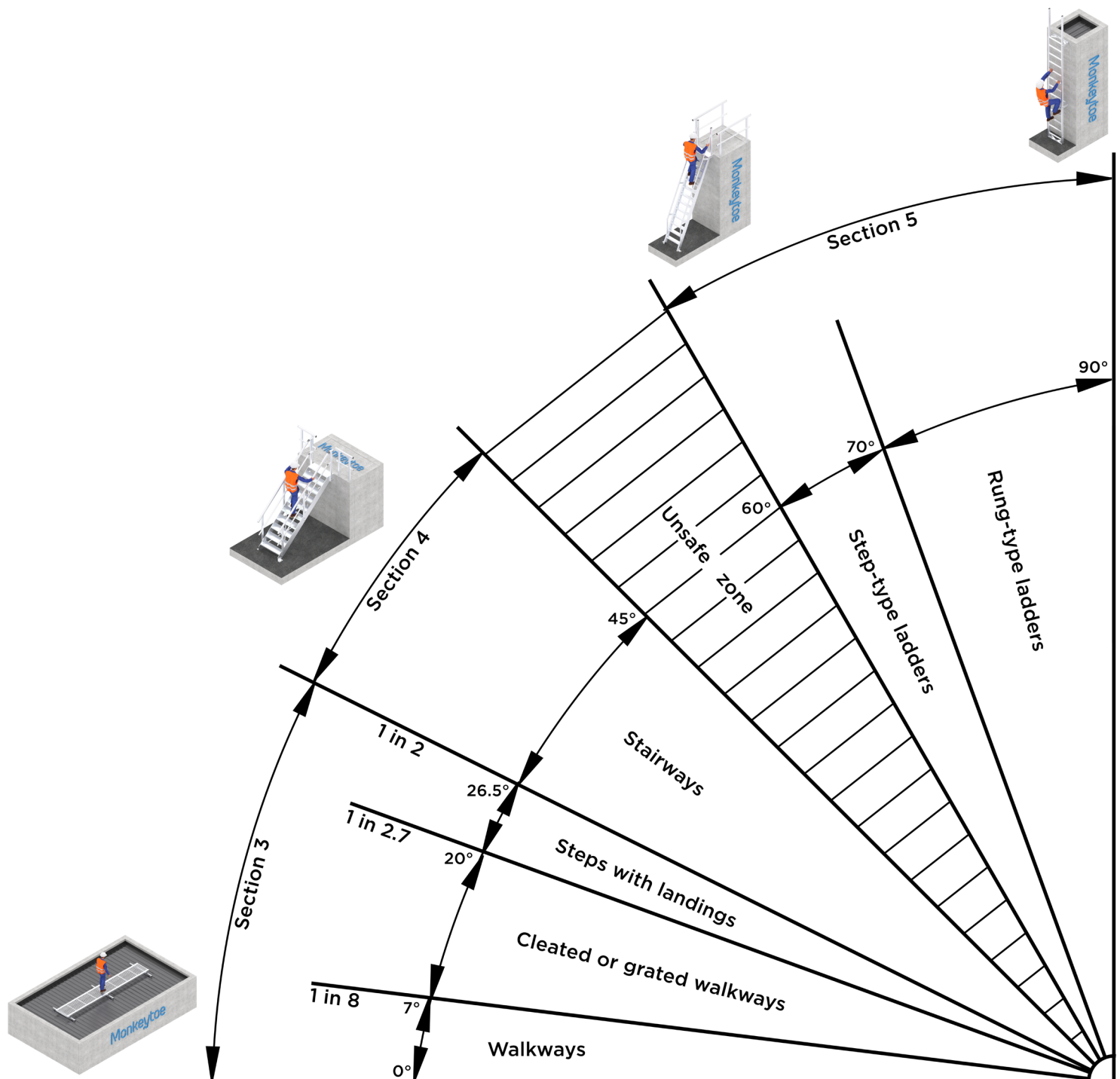
### WARRANTY

- 15 years materials and 2 years install

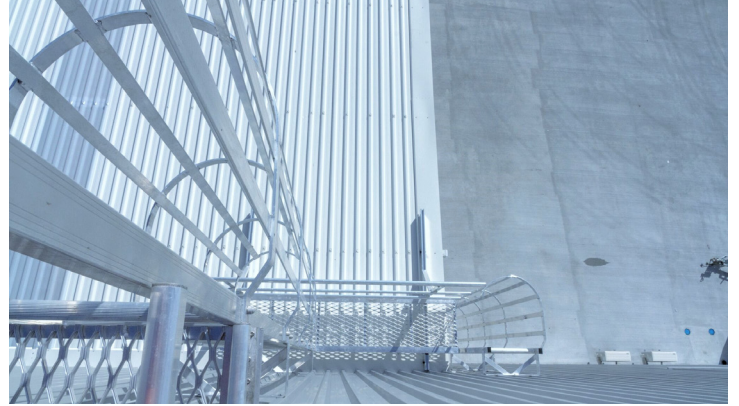
### MAINTENANCE

- It is recommended that fixed ladders are included in the standard 'building warrant of fitness' inspections.
- All damage or loose fixings to be reported immediately to asset manager or building owner for correction.

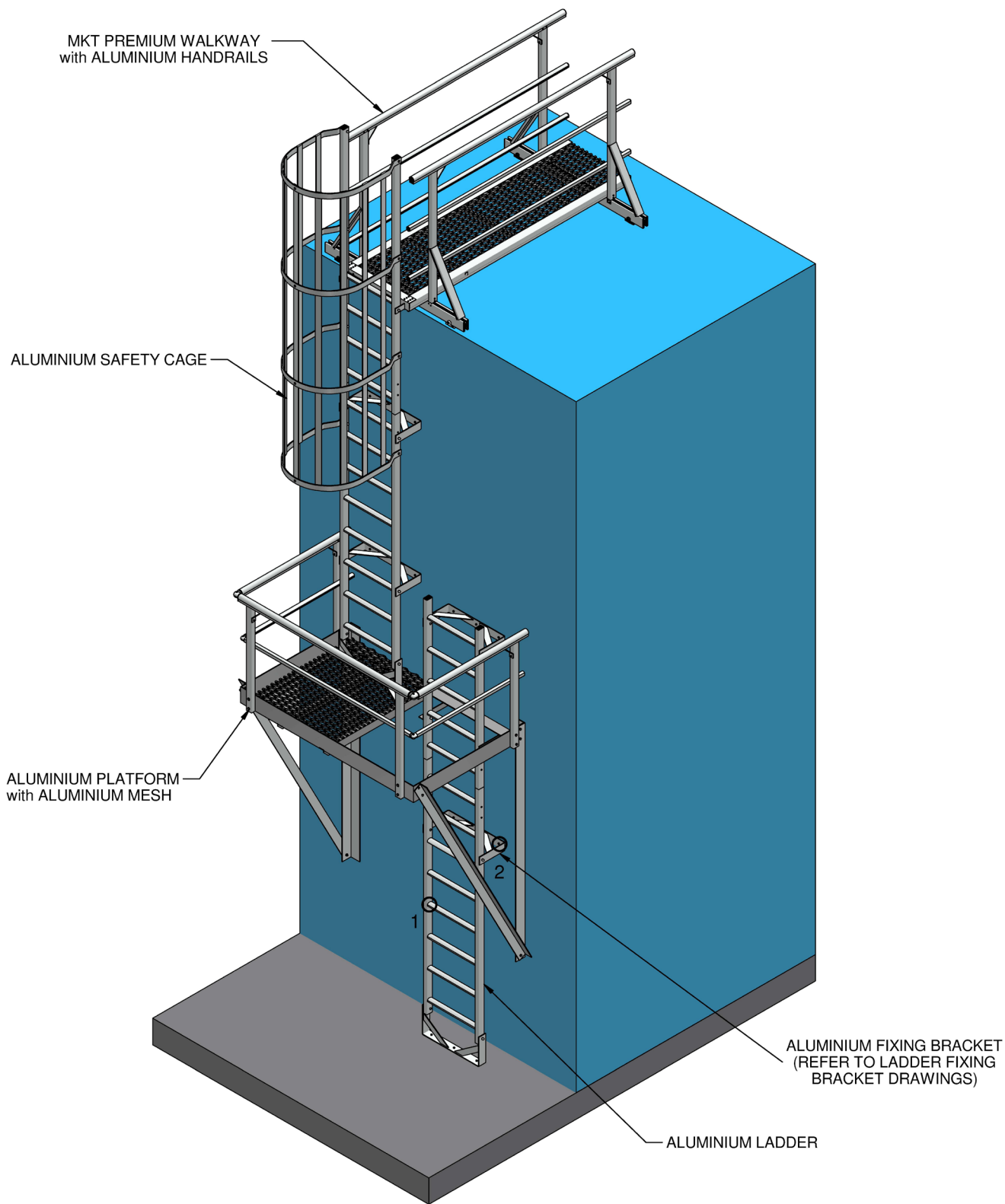
### REFERENCE



### PRODUCT IMAGES









**WORKING LOAD LIMIT: 150kg**

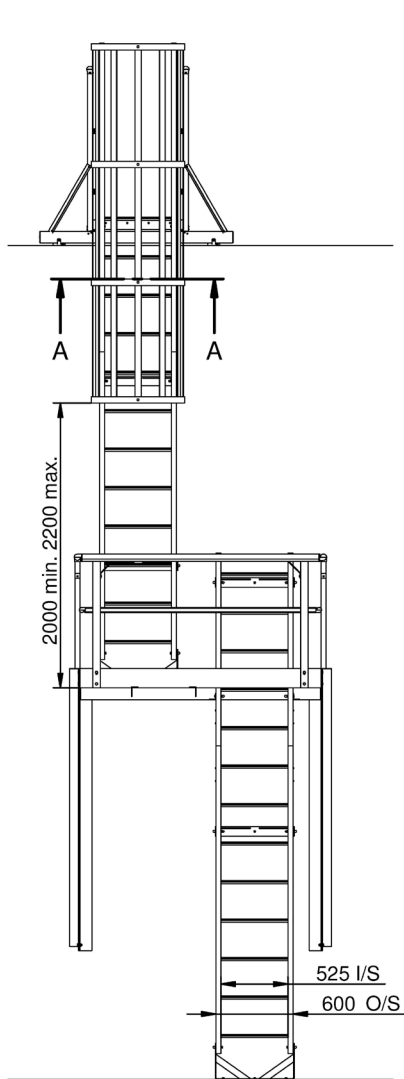
**NOTES:**

DESIGNED IN ACCORDANCE WITH  
 - AS/NZS 1170  
 - AS/NZS 1657:2018  
 - AS/NZS 1892:1996  
 - B1 & B2 DURABILITY CODES  
 - RELEVANT STATUTORY OHS CODES OF PRACTICE

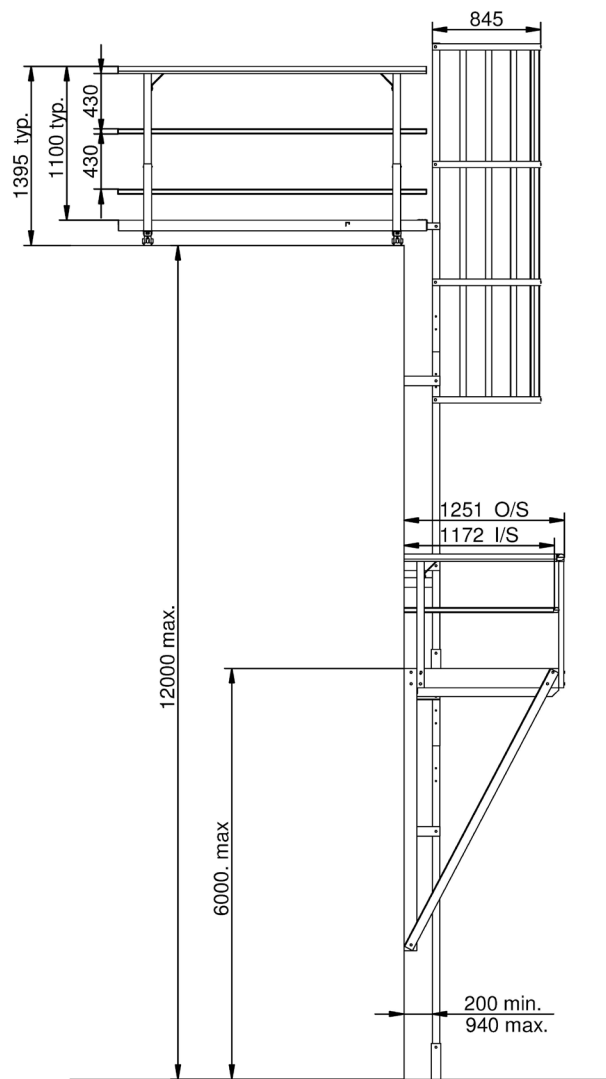
**Monkeytoe**

**EVERYTHING BETTER**  
 0800 658 637 - [www.monkeytoe.co.nz](http://www.monkeytoe.co.nz)

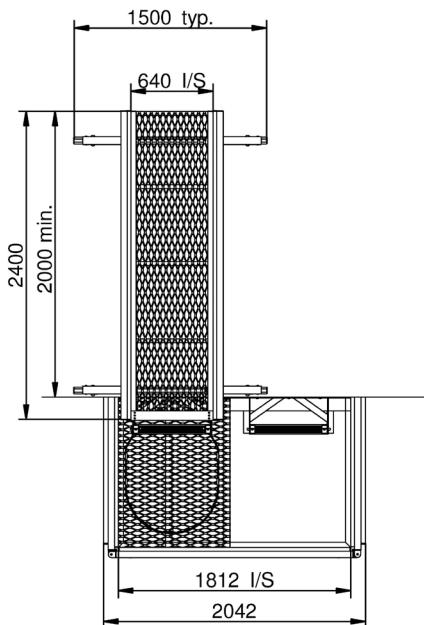
Caged Ladder with Mid Landing and Walkoff			
MONKEYTOE			
DWG No: 2004-LAD-CG-06			13/06/2018
		SHEET 1 OF 2	A3
		SCALE: 1:30	REV:01
		DIMENSIONS IN MILLIMETERS	



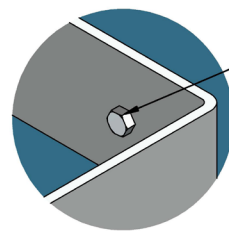
**FRONT VIEW**  
1:40



**SIDE VIEW**  
1:40

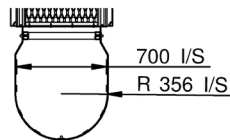


**PLAN VIEW**  
1:40

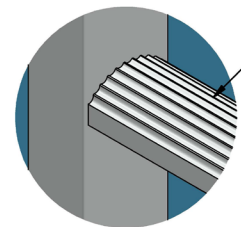


**DETAIL 2**  
1:2.5

**FIXINGS**  
Metal - M8 Bolt  
Timber - M10 Coach Screw  
Concrete - M10 Concrete Screw  
Purlins - 75mm TEK Screw



**SECTION A-A**  
1:40



**DETAIL 1**  
1:2.5

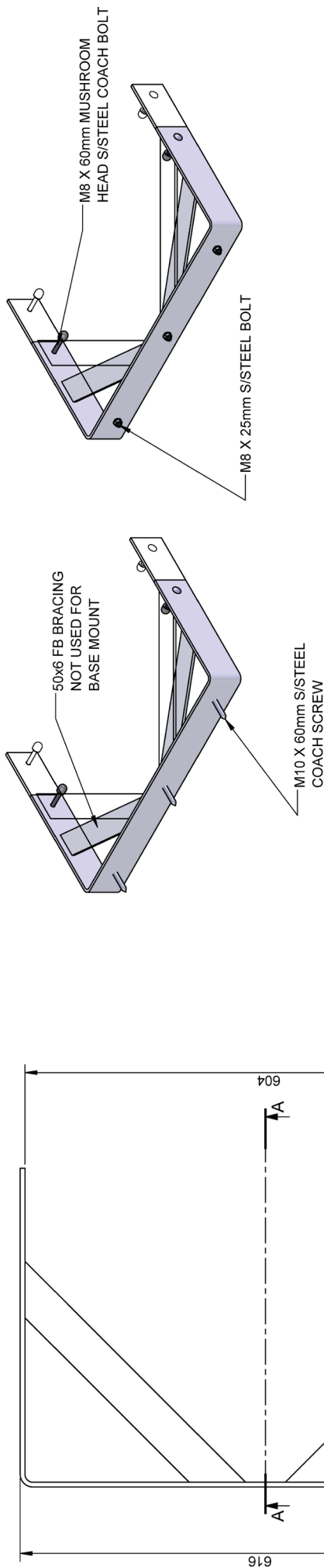
**PROFILED  
ALUMINIUM  
RUNG**

**Monkeytoe**

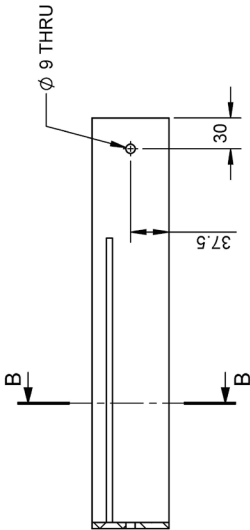
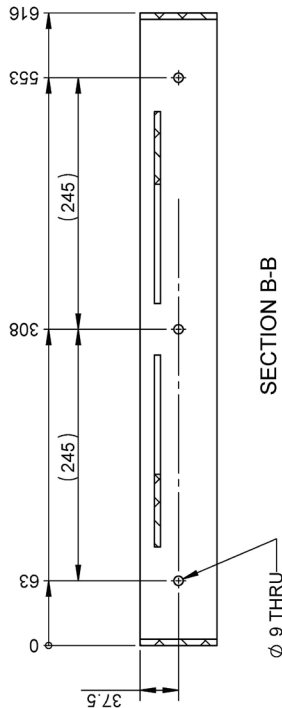
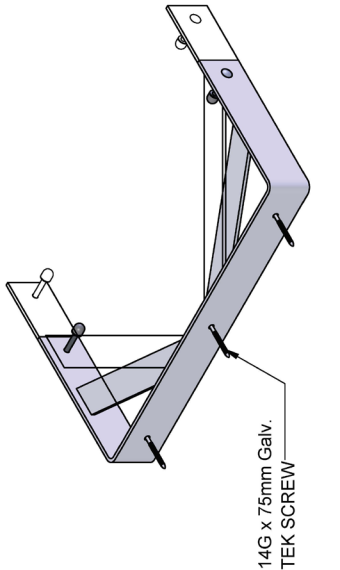
**EVERYTHING BETTER**  
0800 658 637 - [www.monkeytoe.co.nz](http://www.monkeytoe.co.nz)

Caged Ladder with Mid Landing and Walkoff			
MONKEYTOE			
DWG No: 2004-LAD-CG-06		13/06/2018	
	SHEET 2 OF 2		A3
	SCALE: 1:40		REV:01
	DO NOT SCALE		DIMENSIONS IN MILLIMETERS

This drawing and associated design is the copyright and property of Monkeytoe Ltd. It shall not be used for any purpose or project, without prior written consent other than that designated by Monkeytoe Ltd. ©



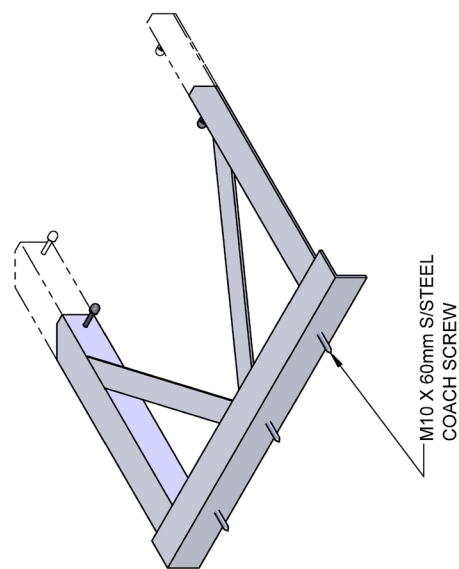
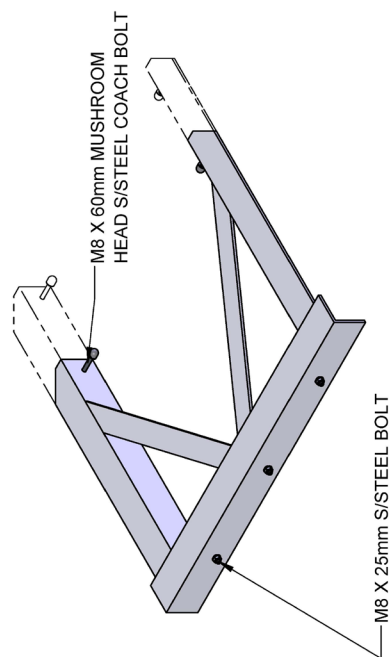
ASSEMBLY CONFIGURATIONS



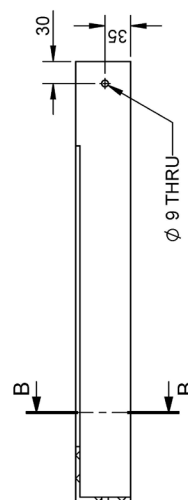
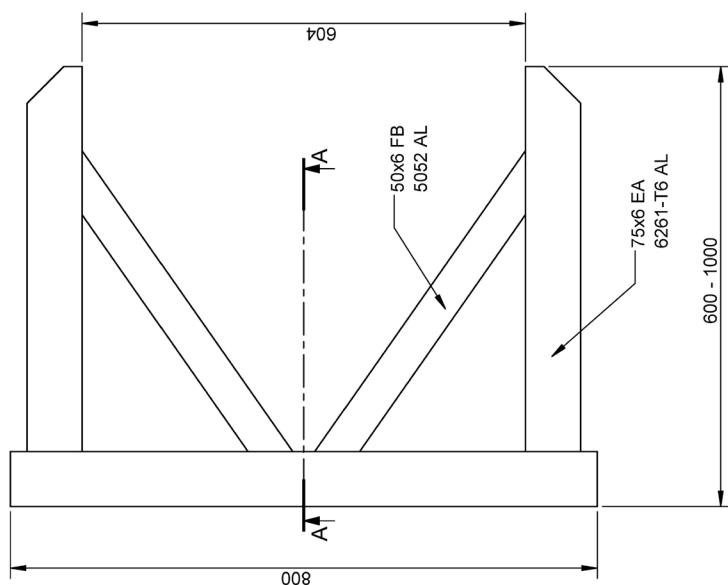
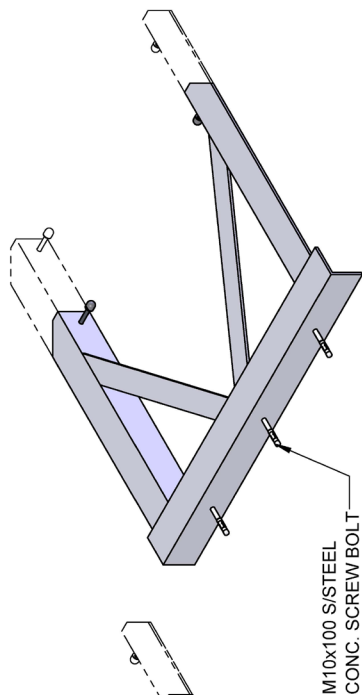
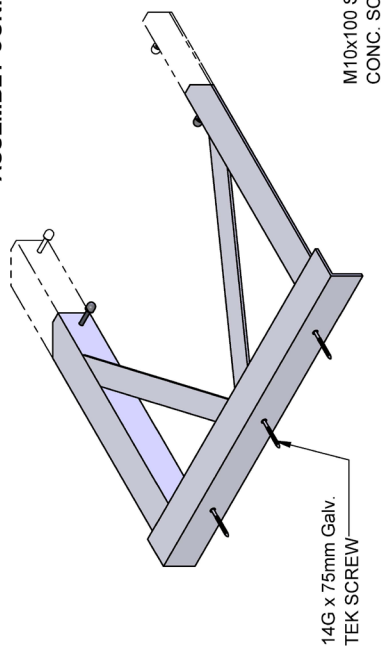
LADDER BRACKET - 280-400mm	
MONKEYTOE	
DWG No: LD421.280-400	01/05/2018
SHEET 1 OF 1	A3
DO NOT SCALE	SCALE 1:5
DIMENSIONS IN MILLIMETERS	
REV:02	

Monkeytoe

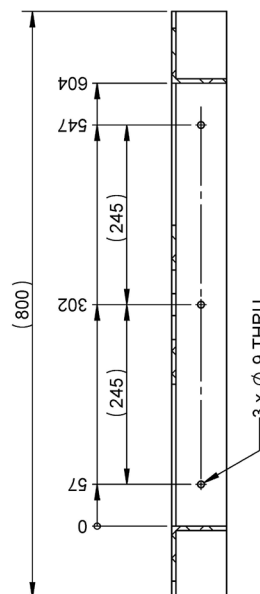
EVERYTHING BETTER  
0800 658 637 - www.monkeytoe.co.nz



ASSEMBLY CONFIGURATIONS



SECTION A-A



SECTION B-B

Monkeytoe

EVERYTHING BETTER  
0800 658 637 - www.monkeytoe.co.nz

LADDER BRACKET - 600-1000mm	
MONKEYTOE	
DWG No: LD421.600-1000	01/05/2015
SHEET 1 OF 1	A3
DO NOT SCALE	SCALE 1:7
DIMENSIONS IN MILLIMETERS	