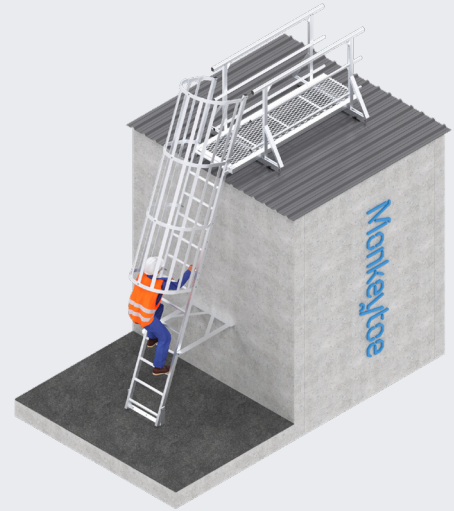


LADDERS

Monkeytoe Angled Caged Ladder with Walkoff CODE: LD04

PRODUCT DESCRIPTION

Permanent angled caged ladder system with walk-off kit that provides safe and easy access to elevated areas with ladder stiles to extend 1000mm or more above landing surface.



TYPICAL USES / APPLICATIONS

- Access requirements with heights 4000mm and greater, and frequent use
- Rooftop access
- Plant maintenance platforms
- Ceiling spaces
- Industrial tank access
- Hospitals, office blocks, sports centre

CHARACTERISTICS / ADVANTAGES

- Unique rung profile design makes ladder comfortable and easy to climb
- Low maintenance and neat appearance
- Modular design for fast and easy install
- Proprietary product with engineering and pre-configured to code compliance dimensions
- High level of safety and confidence for maintained personnel
- Single person use, 150kg rated
- Stress load tested – 1.8kN applied at 75°
- User does not require safety harness competency to use the system

TECHNICAL DATA / MATERIALS

- All componentry and accessories manufactured from high grade structural aluminium
- Product can be powder coated
- Fixing requirements:
 - Steel purlin
 - 2 x M10 S/S bolts OR
 - 2 x M8 toggle bolts OR
 - 3 x 14G tek screws (2mm min purlin thickness)
- Steel structure
 - 2 x M10 S/S bolts
- Concrete (Min 25MPa)
 - 2 x (12mm x 100) tru-bolt OR
 - 2 x (10mm x 100) screw bolt
- Brick
 - 2 x (10 x 100) screw bolt
- Composite panel
 - 2 x 10mm through bolt with spreader plate on rear, OR
 - 2 x M8 toggle bolts

PRODUCT SPECIFICATION SHEET

TESTS

APPROVALS / STANDARDS

- Accordance with AS/NZ 1657
- Designed to AS/NZS 1170
- In accordance with the building B1 structure code
- AS/NZS1891
- Compliant with OHS

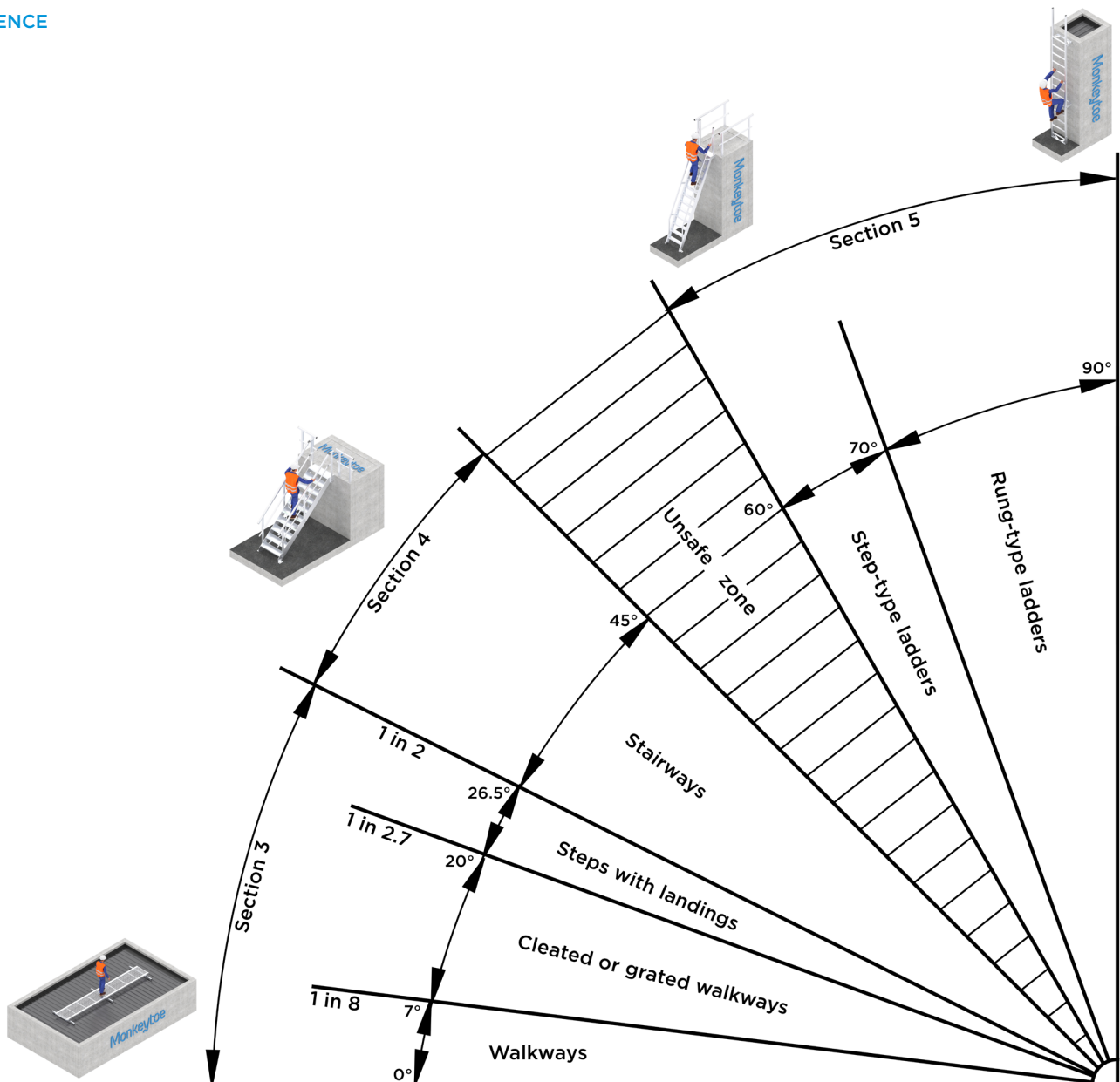
WARRANTY

- 15 years materials and 2 years install

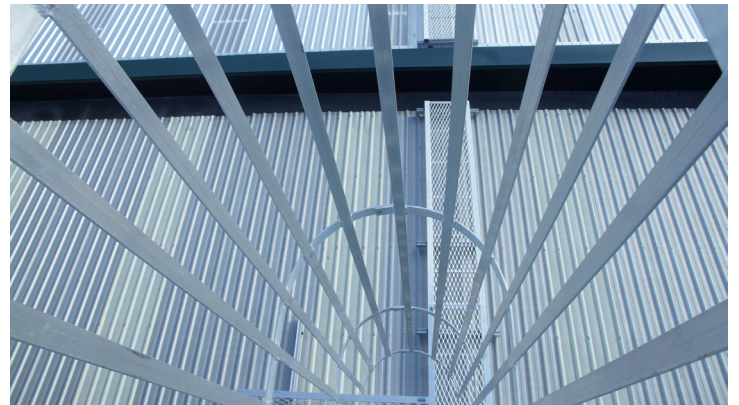
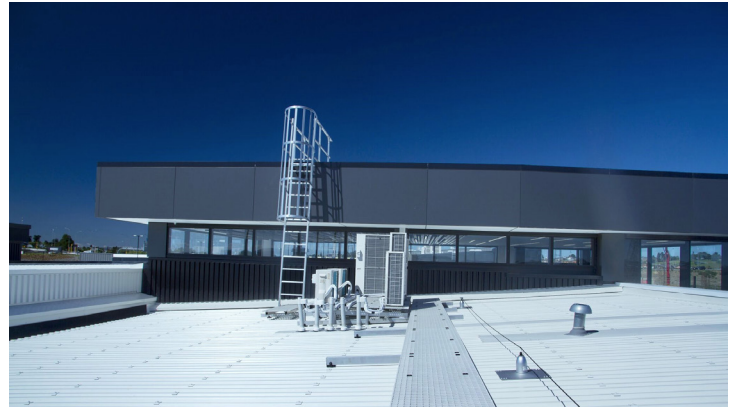
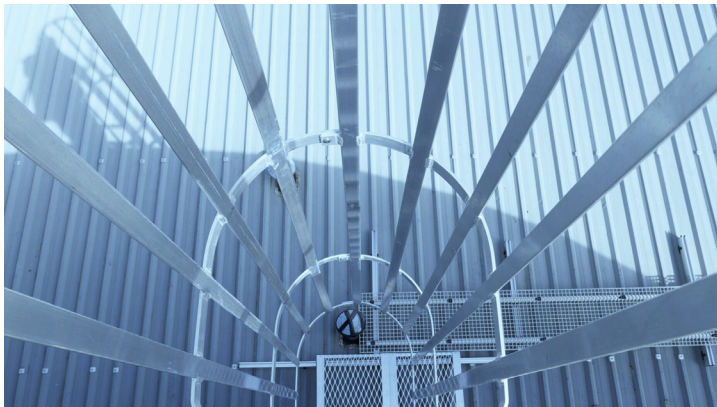
MAINTENANCE

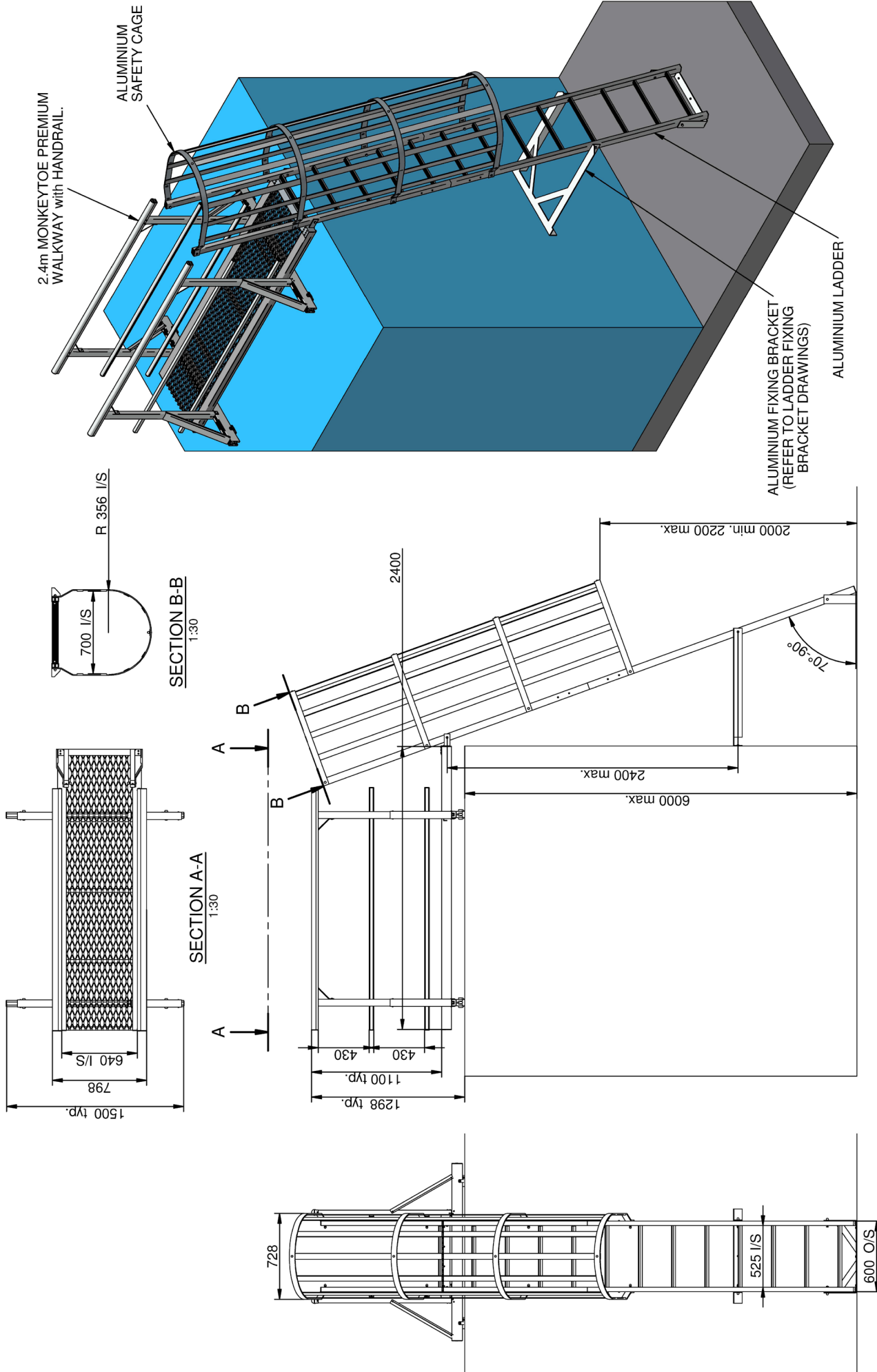
- Self cleaning when used in outdoor situations
- General cleaning recommended in conjunction with standard building / plant cleaning programme or policy
- Visual inspection for any damage or loose fittings is recommended annually
- No certified maintenance is required that effects lifespan or performance of product

REFERENCE



PRODUCT IMAGES



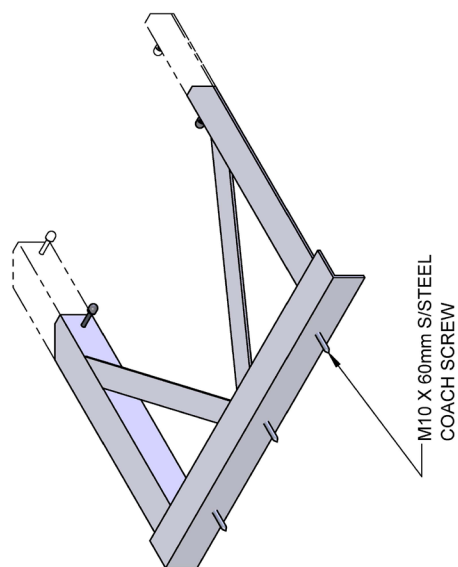
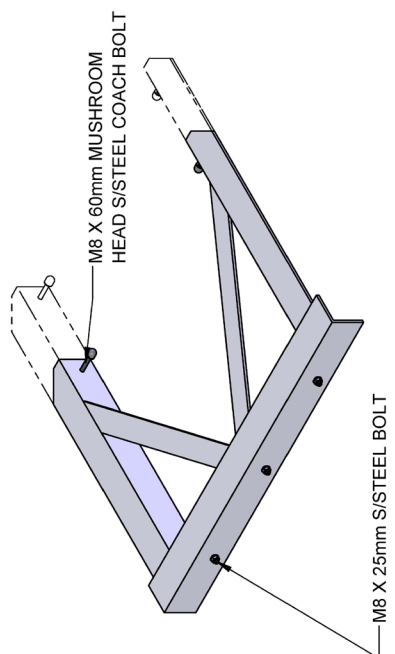


Angled Caged Ladder with Walkoff	
MONKEYTOE	
DWG No: 2004-LAD-CG-07	12/06/2018
SHEET 1 OF 1	A3
SCALE: 1:30	REV:01
DO NOT SCALE	DIMENSIONS IN MILLIMETERS

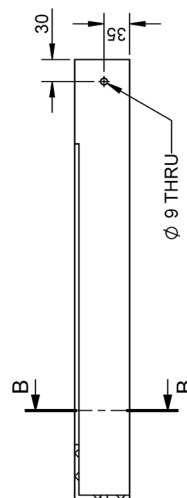
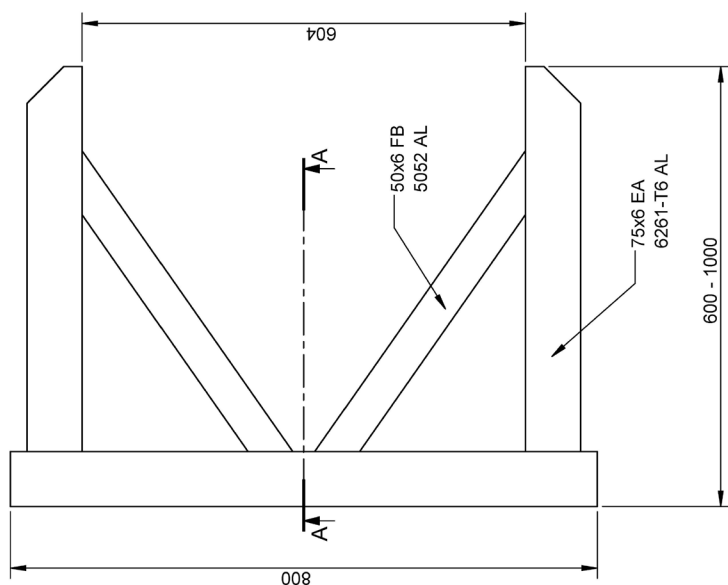
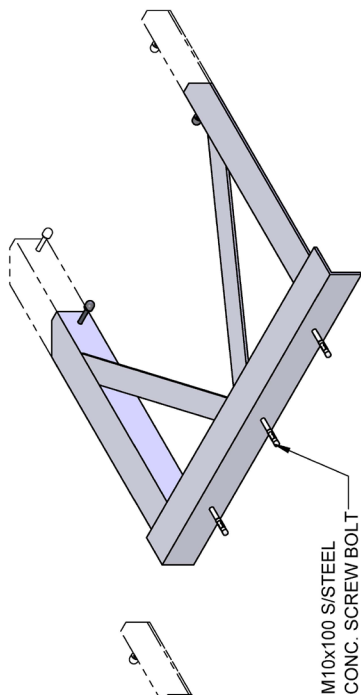
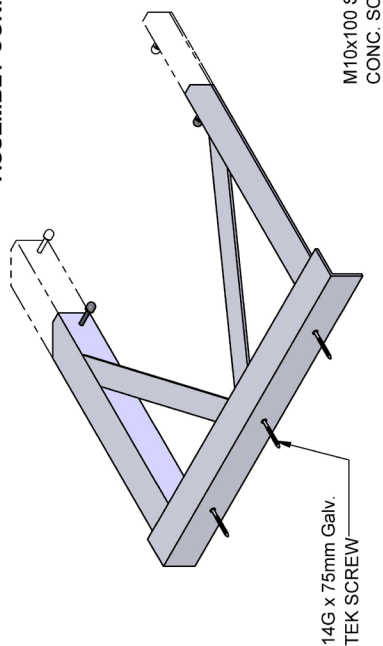
Monkeytoe
EVERYTHING BETTER
 0800 658 637 • www.monkeytoe.co.nz

WORKING LOAD LIMIT: 150kg

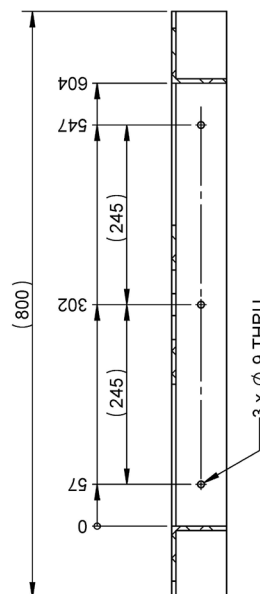
NOTES:
 DESIGNED IN ACCORDANCE WITH
 - AS/NZS 1170
 - AS/NZS 1657:2018
 - AS/NZS 1892:1996
 - B1 & B2 DURABILITY CODES
 - RELEVANT STATUTORY OHS CODES OF PRACTICE



ASSEMBLY CONFIGURATIONS




SECTION A-A

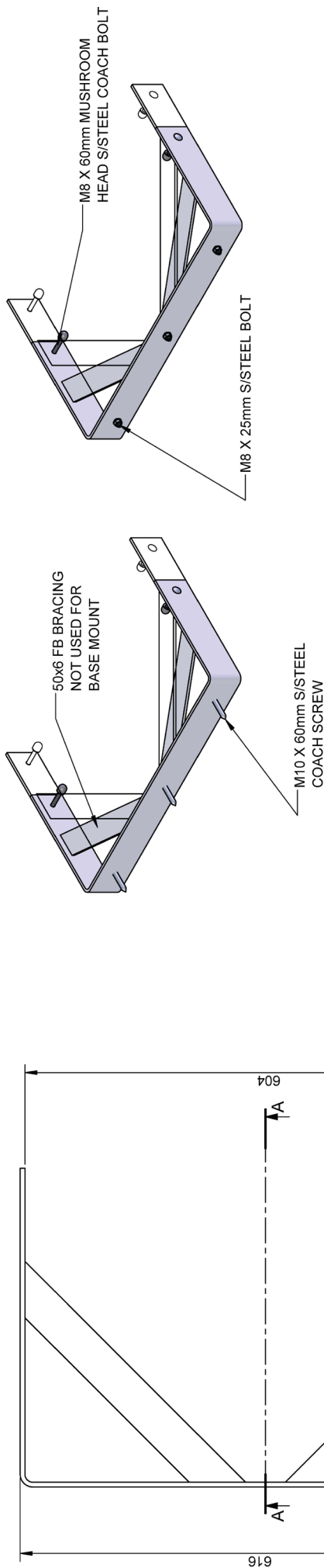


SECTION B-B

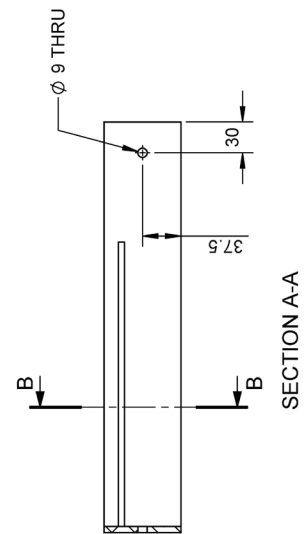
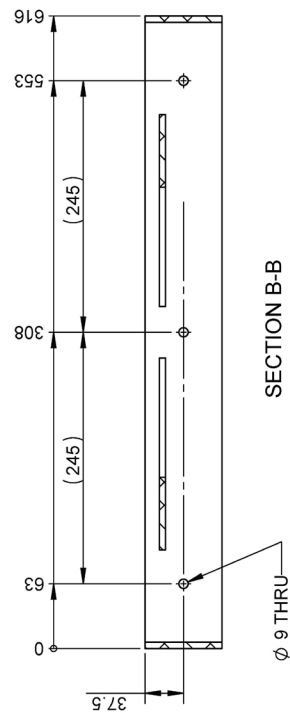
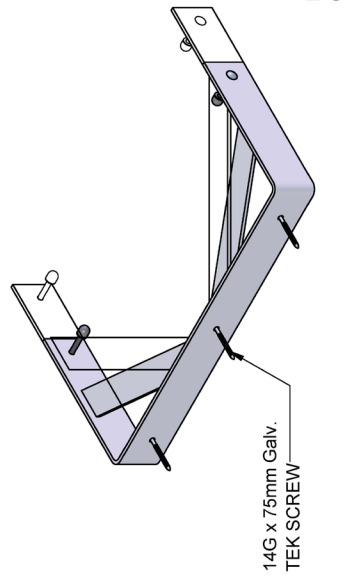
Monkeytoe

EVERYTHING BETTER
0800 658 637 - www.monkeytoe.co.nz

LADDER BRACKET - 600-1000mm			
MONKEYTOE			
DWG No:	LD421.600-1000	01/05/2015	
	SHEET 1 OF 1		A3
	SCALE 1:7		REV:02
DO NOT SCALE	DIMENSIONS IN MILLIMETERS		



ASSEMBLY CONFIGURATIONS



LADDER BRACKET - 280-400mm	
MONKEYTOE	
DWG No: LD421.280-400	01/05/2018
SHEET 1 OF 1	A3
DO NOT SCALE	SCALE 1:5
DIMENSIONS IN MILLIMETERS	

Monkeytoe

EVERYTHING BETTER

0800 658 637 - www.monkeytoe.co.nz