

LOUVRES

Monkeytoe Aluminium Louvres



PRODUCT DESCRIPTION

Aluminium blade louvres to hide unsightly plant and building elements and improve architectural requirements.

TYPICAL USES / APPLICATIONS

- In conjunction platforms to improve aesthetics
- To hide mechanical plant on rooves
- Sunshade
- Ventilation requirements
- Building façades
- Decorative grills
- Surrounding façade for stair tower structures

CHARACTERISTICS / ADVANTAGES

- Integrates perfectly with Monkeytoe aluminium plant platforms
- Mill finish aluminium, anodised and powder coating finish options available
- Reduce wind loading with unique aerodynamic design
- Allows free flow of air when close to HVACs
- Variable louvre blade positioning for variable aesthetics and air flow
- Reduced solar / UV glare for plant
- Louvres have 20% less wind loadings than mesh screens

TECHNICAL DATA / MATERIALS

- Louvres: Aluminium 6063-T6
- Clamp locking screw: Stainless steel (410 S21)

TESTS

APPROVALS / STANDARDS

- Accordance with relevant sections of AS/NZ 1657
- Building B1 structure code

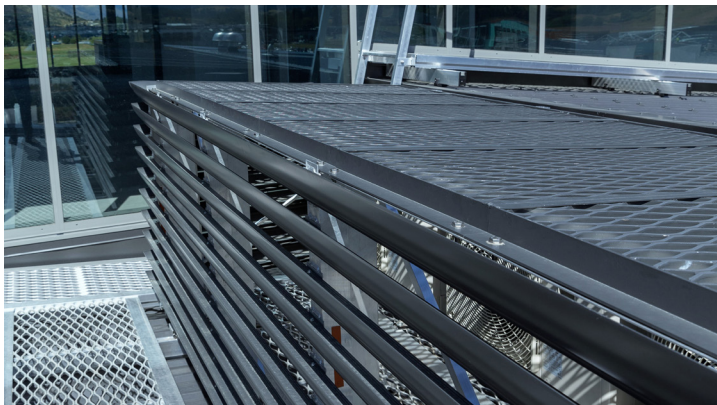
WARRANTY

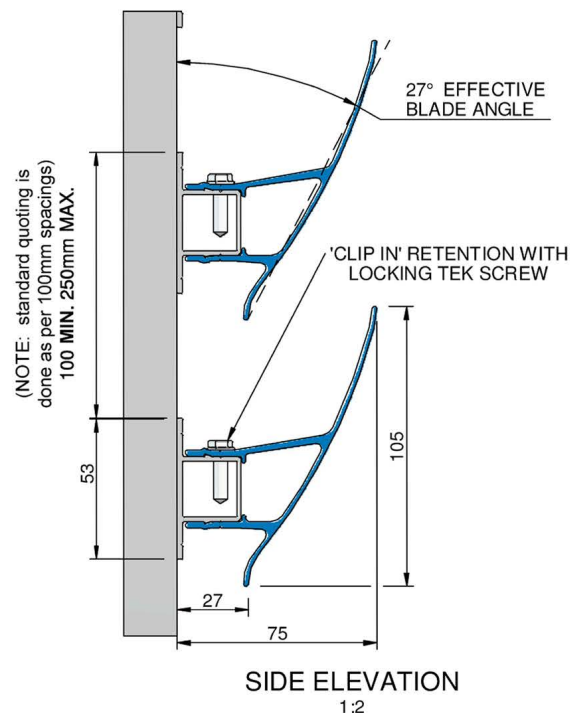
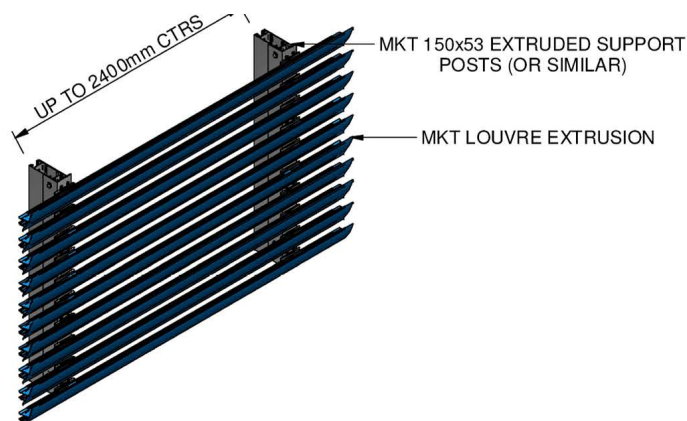
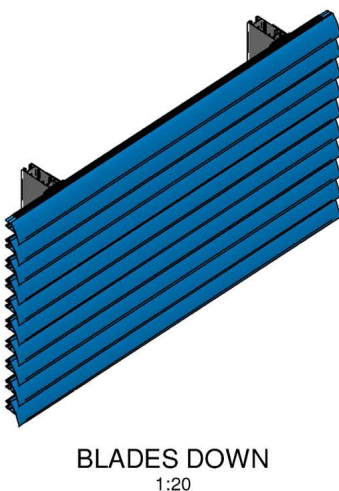
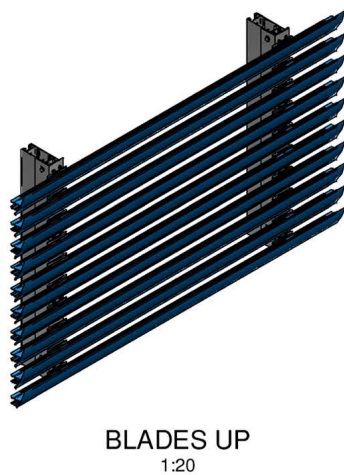
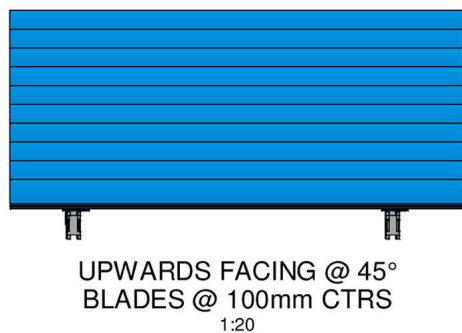
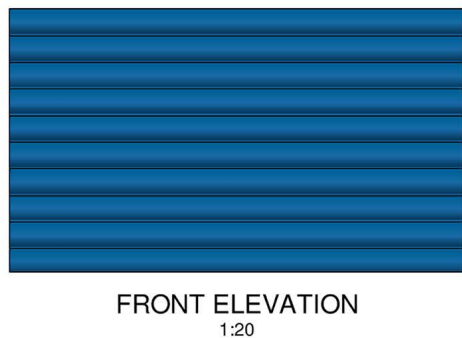
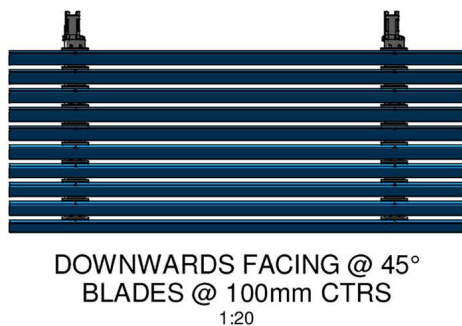
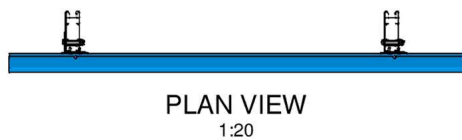
- 25 years materials and 2 years install
- Product Warranty is valid in accordance to the PS1 Engineering Standard that it has been designed to

MAINTENANCE

- It is recommended that steps, stairs or stiles are included in the standard 'building warrant of fitness' inspections
- All damage or loose fixings to be reported immediately to asset manager or building owner for correction

PRODUCT IMAGES





Open area for Airflow		
Louvre Spacing [mm]	Open length [mm]	Open Area [%]
100	38.57	39%
125	51.13	41%
150	65.3	44%
175	84.62	48%
200	106.35	53%
225	129.3	57%
250	152.8	61%

Open area for screen porosity		
Louvre Spacing [mm]	Open length [mm]	Porosity Area [%]
100	0	0%
125	20	16%
150	45	30%
175	70	40%
200	95	48%
225	120	53%
250	145	58%

DRAWN BY:	KM
MODELED BY:	KM
CHECKED BY:	BP/BD/LK
DATE DRAWN:	7/12/2018
LAST SAVED:	7/12/2018
MATERIAL:	SEE B.O.M.
FINISH:	Mill
TOLERANCES:	+0,-2.0;0.1°

Monkeytoe

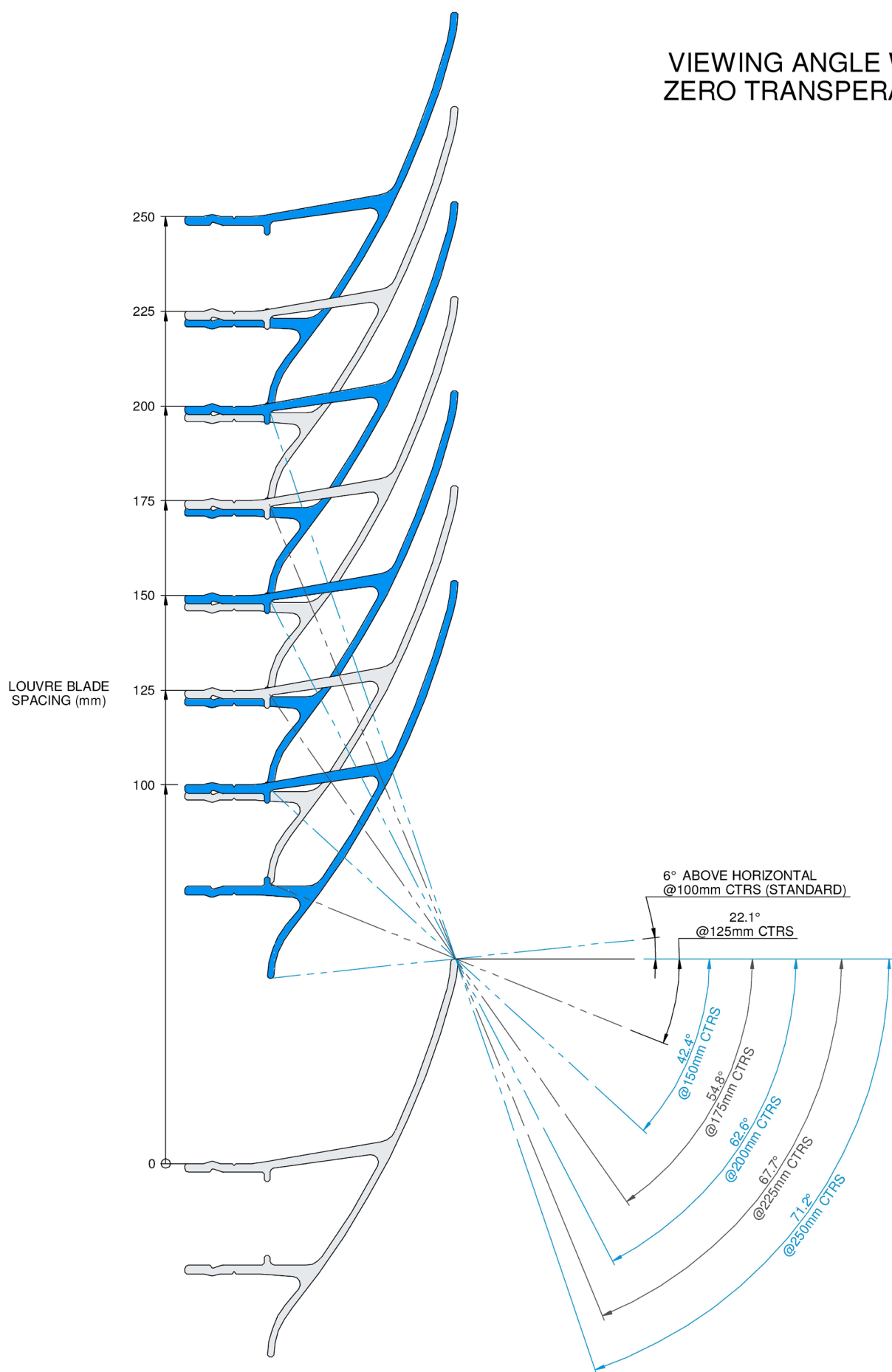
EVERYTHING BETTER

0800 658 637 - www.monkeytoe.co.nz

Louvre System & Mounting Details		
MonkeyToe Group Ltd		
DWG No: 2005-LVS-1		2005
	SHEET 1 OF 1	A3
DO NOT SCALE	SCALE: 1:2	REV:01
	DIMENSIONS IN MILLIMETERS	

This drawing and associated design is the copyright and property of Monkeytoe Ltd. It shall not be used for any purpose or project, without prior written consent other than that designated by Monkeytoe Ltd. ©

VIEWING ANGLE WITH
ZERO TRANSPERANCY



This drawing and associated design is the copyright and property of MonkeyToe Ltd. It shall not be used for any purpose or project, without prior written consent other than that designated by MonkeyToe Ltd.

DRAWN BY:	KM
MODELED BY:	KM
CHECKED BY:	BP/BD/LK
DATE DRAWN:	7/12/2018
LAST SAVED:	7/12/2018
MATERIAL:	SEE B.O.M.
FINISH:	Mill
TOLERANCES:	+0,-2.0;0.1°

Monkeytoe
EVERYTHING BETTER
0800 658 637 - www.monkeytoe.co.nz

Louvre Angle Chart		
MonkeyToe Group Ltd		
DWG No: 2003-PM20-VA2	2003	
	SHEET 1 OF 1	A3
DO NOT SCALE	SCALE: 1:1	REV:01
DIMENSIONS IN MILLIMETERS		