

STAIRS

Monkeytoe Public Access Stairs

PRODUCT DESCRIPTION

Versatile and compliant public access stairs configured for any commercial or residential application where there is a requirement for public access, these can provide self supported access to upper levels as required. Manufactured from high tensile construction grade aluminium. These stairs meet the requirements of Common & Accessible Stairs in D1 access routes. For further guidance see our **Stair Design Guide**.



TYPICAL USES / APPLICATIONS

- Fire Egress
- Mezzanine floor access
- Access to balconies
- Apartment blocks, private access
- Airports
- Shopping malls
- Stair Towers
- Internal Multi-Level Stairs
- Cinemas
- Aged Care
- Hospitals

CHARACTERISTICS / ADVANTAGES

- Fully pre-engineered system
- Optional open-risers
- Prefabricated modular componentry
- Lightweight, high strength aluminium construction, reducing loading on existing structures
- Can be powdercoated
- Suits many varied applications and locations
- Easier to lift into position than traditional steel stairs
- Low maintenance and neat appearance
- Unique profiled anti-slip tread design makes stair comfortable and safe to use
- Great for retro-fit / existing applications
- Handrails to C5 as standard or option of C3 with <100mm Gaps
- Optional Architectural & Acoustic Options

TECHNICAL DATA / MATERIALS

- | | |
|---|---|
| • Stringers: 6261 - T6 aluminium flat bar | • Handrails: 6060 - T5 aluminium extrusion |
| • Stair treads: 6106 - T6 aluminium extrusion | • Fixings: Bolts 300 Series S/Steel, Tek Screws, Dacromet Coat 400 Series S/Steel |
| • Stanchions: 6106 - T6 aluminium RHS extrusion | |

TESTS

APPROVALS / STANDARDS

- | | |
|---|---------------|
| • Accordance with relevant sections of AS/NZ 1657 | • AS/NZS 1664 |
| • Building B1 structure code | • AS/NZS 1170 |
| • OHS codes of practice standard/guidelines | • AS/NZS 1866 |
| • D1 - Access routes | |

WARRANTY

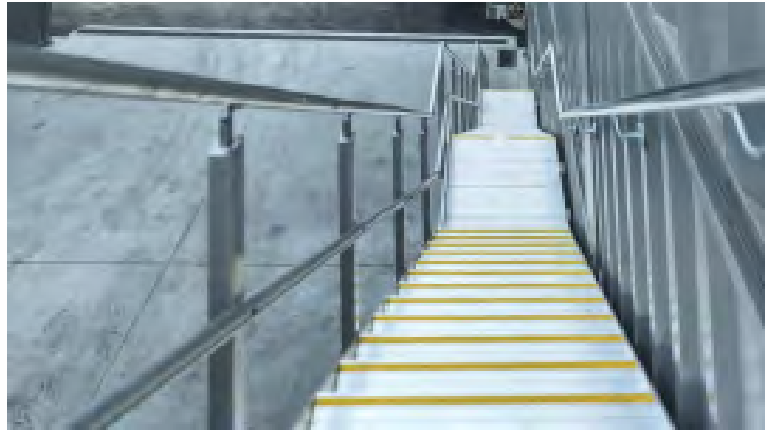
- 25 years materials and 2 years install
- Product Warranty is valid in accordance to the PS1 Engineering Standard that it has been designed to

INSTALLATION

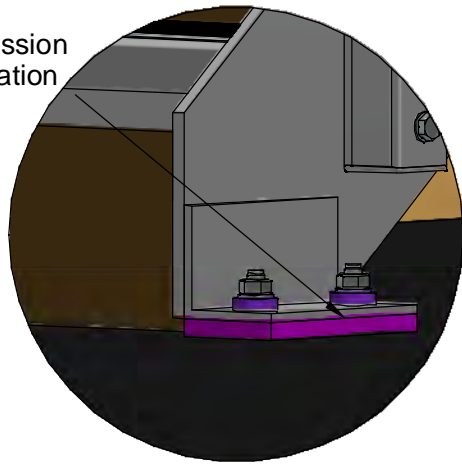
- Installation works must be carried out only by Monkeytoe or instructed/approved contractors

MAINTENANCE

- Self cleaning when used in outdoor situations
- General cleaning recommended in conjunction with standard building / plant cleaning programme or policy
- Annual Inspection as part of Building WOF is recommended, refer to Maintenance Manuals



Sylodyn Isolation Option:
On All Mounting Points To
Remove Structure
Borne Noise Transmission
Engineered to Application



DETAIL 1
BASE ACOUSTIC
ISOLATION OPTION
1:5

Stair Tread Options Of
Composite Wood And
Engineered Wood Plank

Anti Slip Nosing Insert
Coloured to Match Tread

Riser Optional
Powdercoating To
Suit Tread Including
Woodgrain Effect

MKT Aluminium Support Structure
Building Connected or Self Supporting

DETAIL 2
STEP DETAILS AND OPTIONS
1:12.5

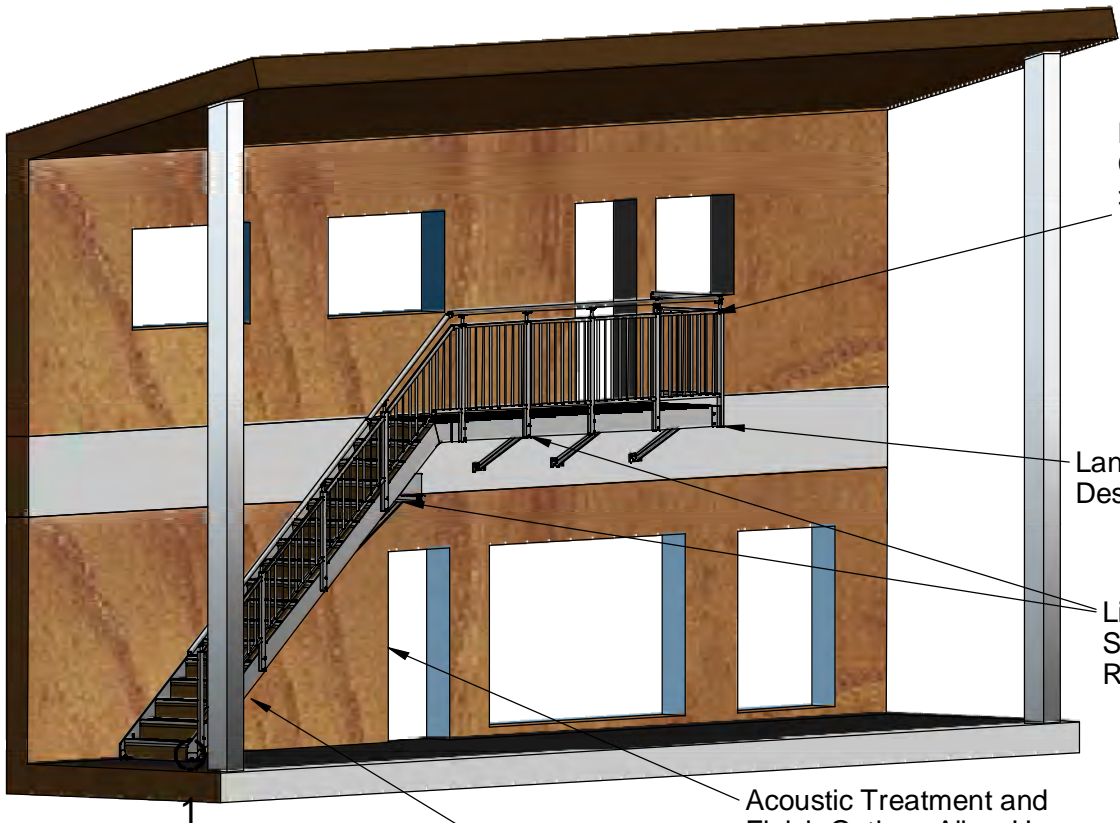
Hush Step CLD System
Removes Resonant Noise Generation
Installed On Step And or Riser

Sylodyn Isolation Stepped
Washers Provide Complete
Structural Acoustic Isolation

Sylodyn Isolation Option:
On All Mounting Points To
Remove Structure
Borne Noise Transmission
Engineered to Application

Monkeytoe Public Access Stair Specifications		
Design Feature	Accessible Stairs	Common Stairs
Max Height Per Flight	2.5m	2.5m
Max Height before change of Direction ⁴	8m	8m
Pitch Angle	23° - 32°	23° - 37°
Max Step Height	180	190
Min Tread Depth	310	280
Riser Style	Closed	Closed, Open if accessible alternative stair available ¹
No of risers per flight	≤13	≤13
Width between handrails	900 mm	900 mm
Landings	900 mm	900 mm
Handrails	Both sides	One side ≤2 m
Tread Projection	0-25 mm	0-25 mm – 15 min for Open

¹For more information on **Secondary** Private stairs see D1/AS1, not covered here.
²For maintenance access systems covered by AS1657-2018, not covered in D1/AS1 for service or private
³Required for multi-unit dwellings and recommended for private, 600 mm is OK for service stairs
⁴Can also be achieved by landings see change of direction info and D1/AS1



Handrail System
C5 rated with
>100 mm Gaps

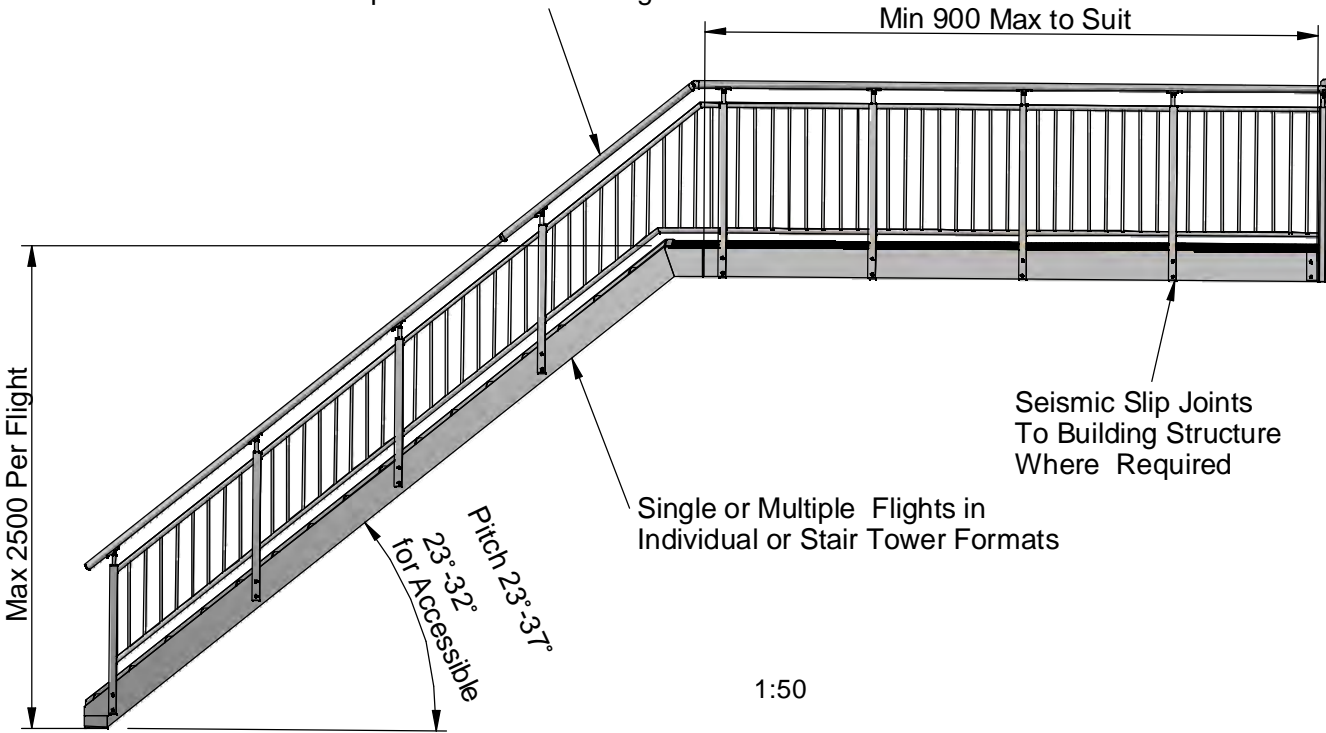
Landing Structure And Supports
Designed For Application

Lightweight Prefabricated Stair
Sections Arrive Prefinised and
Ready For Fast Simple Installation

Acoustic Treatment and
Finish Options Allow Use
In Residential Applications

Designed for Public Access Areas
To Common or Accessible Classification
As per D1 Access Routes

Marine Grade Low maintenance
Aluminium Structure with
Stainless Steel Fixings
Optional Powdercoating



Min 900 Max to Suit

Seismic Slip Joints
To Building Structure
Where Required

Single or Multiple Flights in
Individual or Stair Tower Formats

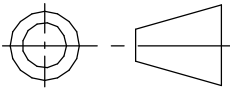
Pitch 23-37°
for Accessible

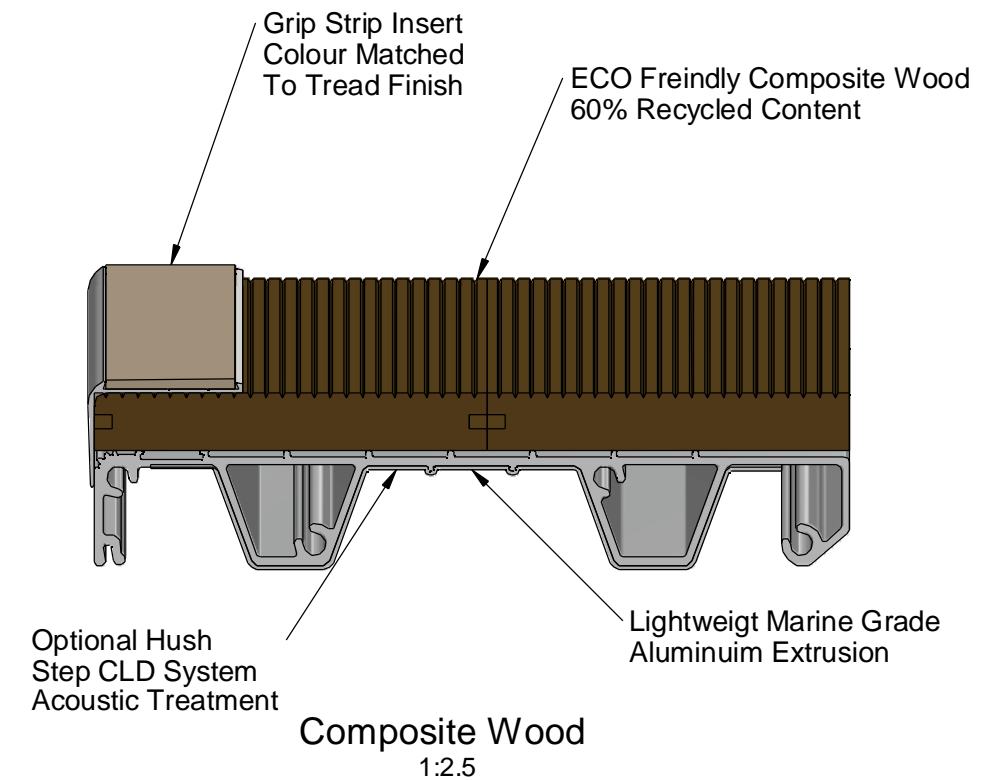
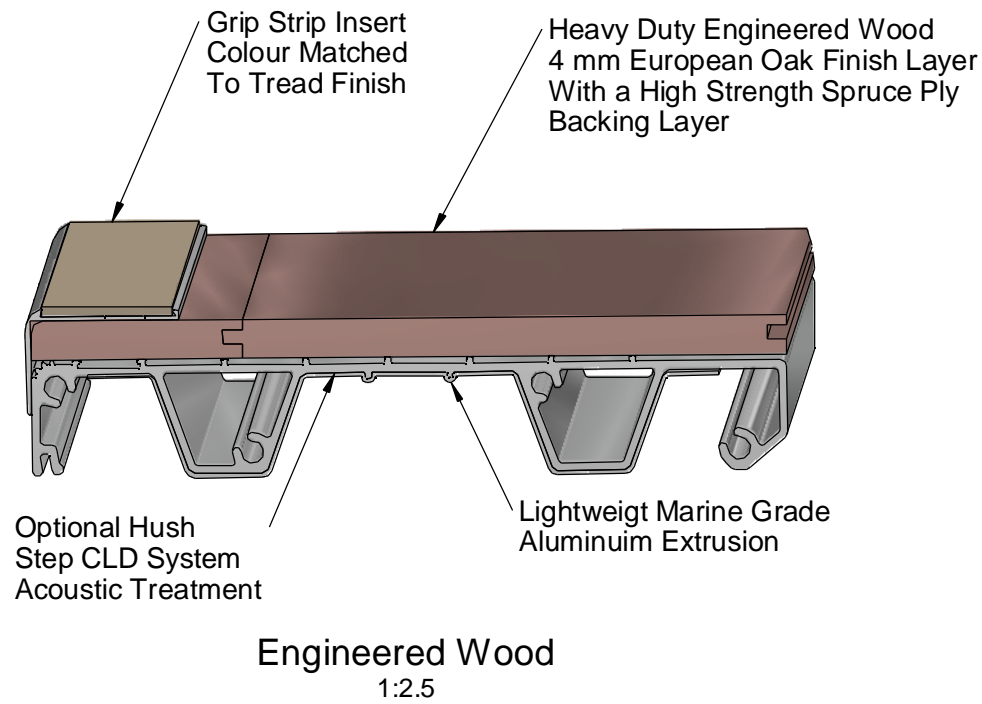
Max 2500 Per Flight

1:50

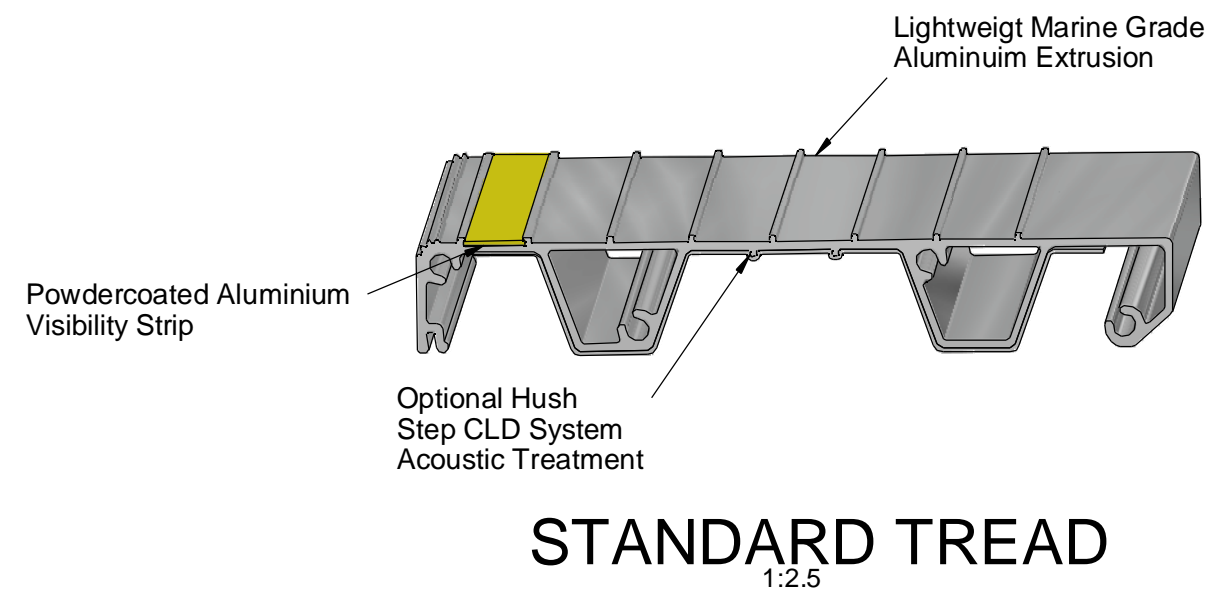
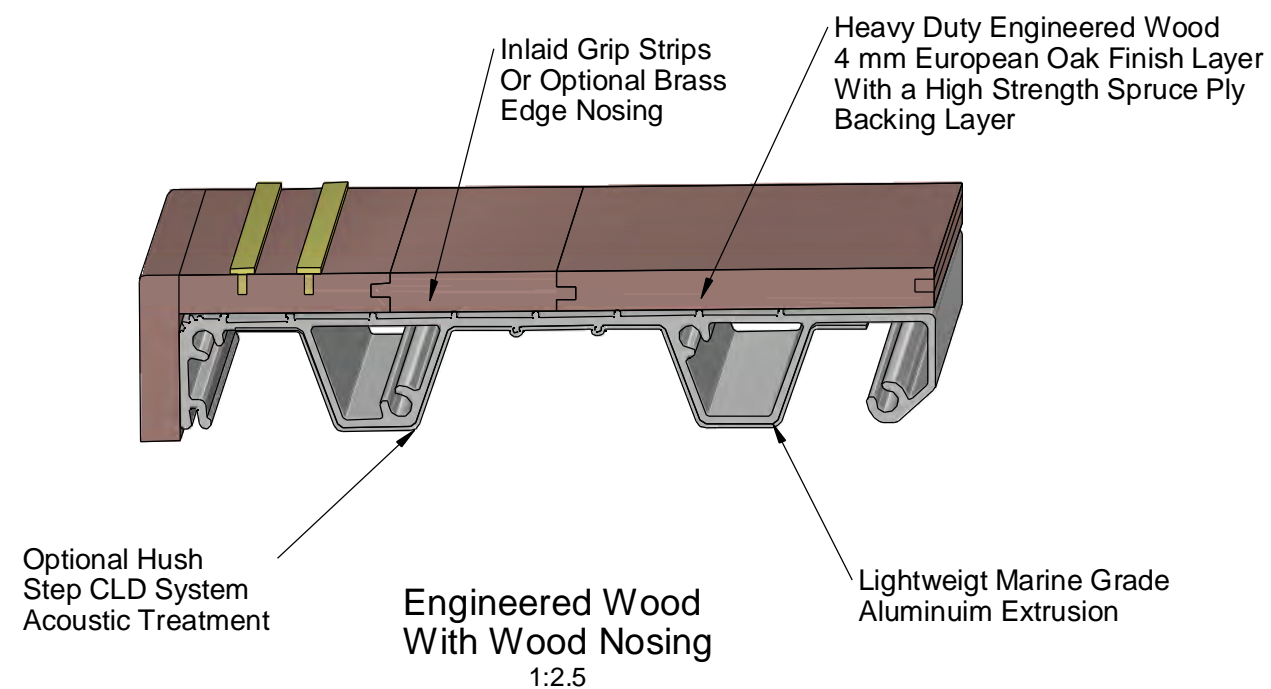
Monkeytoe

EVERYTHING BETTER
0800 658 637 - www.monkeytoe.co.nz

Public Access Stair Sytems		
MONKEYTOE GROUP		
DWG No: 2003-PASS-1		21/09/2022
	SHEET 1 OF 2	A3
	SCALE: 1:75	REV:01
DO NOT SCALE	DIMENSIONS IN MILLIMETERS	

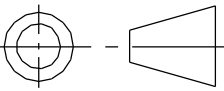


ARCHITECTURAL TREAD OPTIONS



Monkeytoe

EVERYTHING BETTER
0800 658 637 - www.monkeytoe.co.nz

Public Access Stair Sytems		
MONKEYTOE GROUP		
DWG No: 2003-PASS-1	21/09/2022	
 DO NOT SCALE	SHEET 2 OF 2	A3
	SCALE: 1:1	REV:01
DIMENSIONS IN MILLIMETERS		