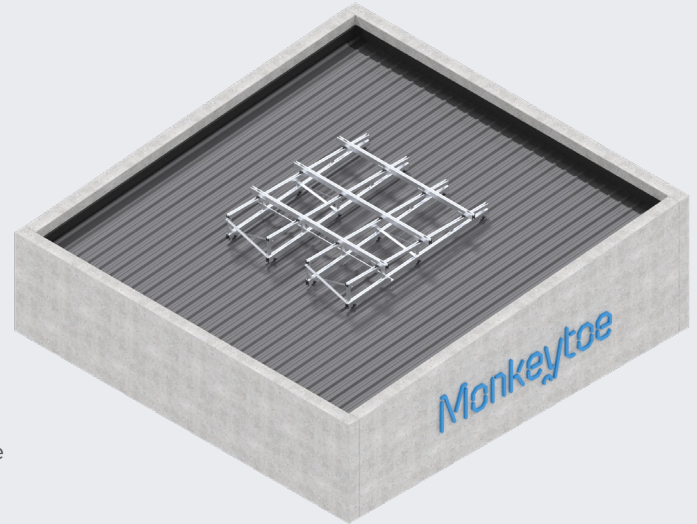


PLATFORMS

Monkeytoe Skeletal Plant Platform



PRODUCT DESCRIPTION

Monkeytoe skeletal platform system ensures the simple effective installation and mounting of either a series of condenser units, large package units or any heavy duty equipment.

TYPICAL USES / APPLICATIONS

- Rooftop mounting for air conditioning units
- Hot water cylinder units
- Telecommunication equipment mounting

CHARACTERISTICS / ADVANTAGES

- Lighter than steel structures
- Less impact than steel platforms on support structures
- Pre-engineered proprietary system
- Prefabricated modular componentry ensures fast onsite install
- No onsite welding / hot work requirements
- Support up to 6000kg
- Low maintenance and neat appearance
- Modular design for ease of install
- Simply lifted into desired position
- Can be walked into position
- System uses the unique Monkeytoe mounting clip when installed on roof tops

TECHNICAL DATA / MATERIALS

- High tensile structural T6 marine-grade aluminium
- Fixings: Stainless steel 304 grade
- Roof connections:
 - Roofing clip - High density polyethylene, UV resistant
 - Class 4 galvanised roofing jacking stud
 - Neoprene sealing washers

TESTS

APPROVALS / STANDARDS

- Structural design action B1 & B2
- AS/NZS 1170 Standards Australia / New Zealand (Relevant parts)
- Aluminium Structures, Part 1: Limit State Design AS/NZS 1664.1 Standards Australia / New Zealand NZS/AS 1657

WARRANTY

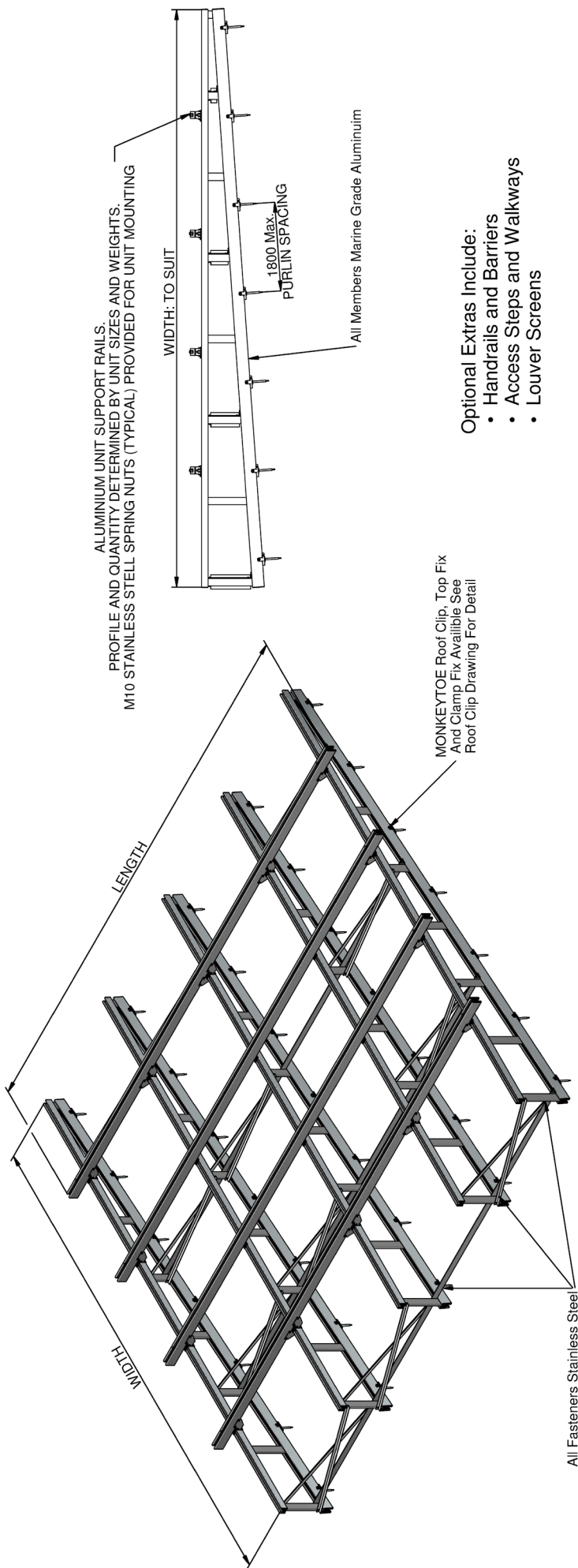
- 25 years materials and 2 years install
- Product Warranty is valid in accordance to the PS1 Engineering Standard that it has been designed to

MAINTENANCE

- It is recommended that plant platforms are included in the standard 'building warrant of fitness' inspections.
- All damage or loose fixings to be reported immediately to asset manager or building owner for correction.

PRODUCT IMAGES





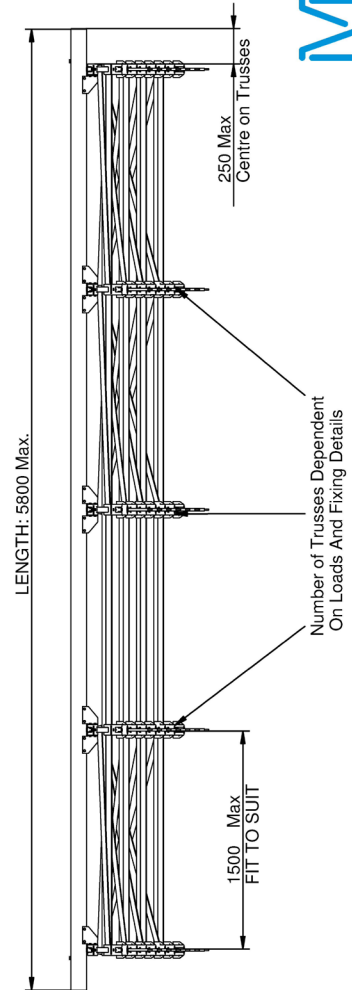
Optional Extras Include:

- Handrails and Barriers
- Access Steps and Walkways
- Louver Screens

FOR SITE SPECIFIC DESIGN PLEASE SUPPLY THE FOLLOWING INFORMATION:

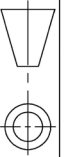
1. UNIT WEIGHTS AND DIMENSIONS
2. ROOF CLADDING, PITCH AND PURLIN SPACING
3. GEOGRAPHIC LOCATION AND SOIL CLASS (AS/NZS1170)
4. BUILDING IMPORTANCE LEVEL (AS/NZS1170)

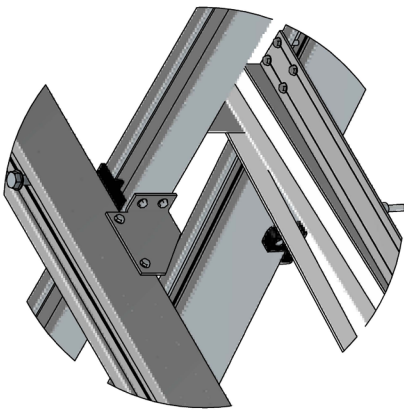
NOTE: MONKEYTOE IS NOT RESPONSIBLE FOR DETERMINING THE SUITABILITY OF THE BUILDING STRUCTURE TO SUPPORT THE PLATFORM. PLATFORMS CAN BE DESIGNED TO SPECIFIC LOADINGS AND SUPPORT CENTRES IF REQUIRED



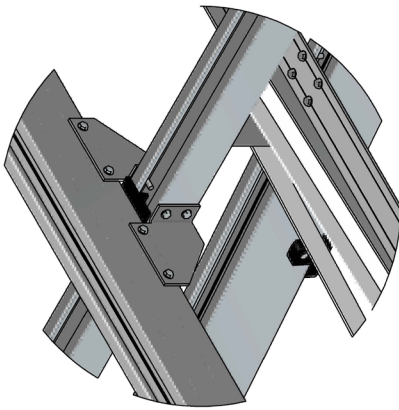
Monkeytoe

EVERYTHING BETTER
0800 658 637 - www.monkeytoe.co.nz

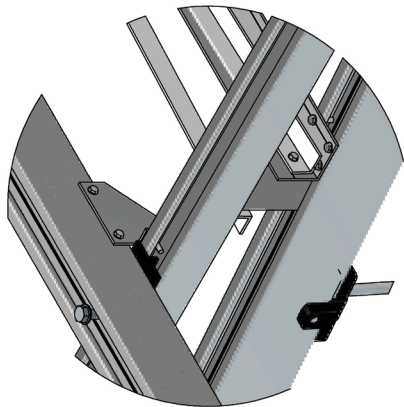
Typical Skeletal Platform			
MONKEYTOE			
DWG No: 2004-SKE-01		18/07/2018	
	SHEET 1 OF 2	A3	REV: 01
DO NOT SCALE	SCALE: 1:25	DIMENSIONS IN MILLIMETERS	



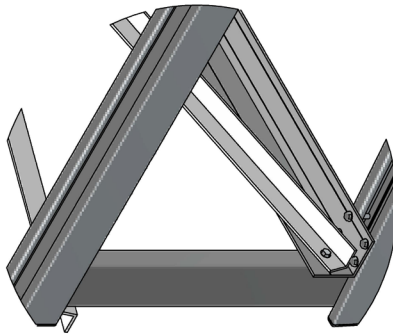
DETAIL 1
1:5



DETAIL 2
1:5



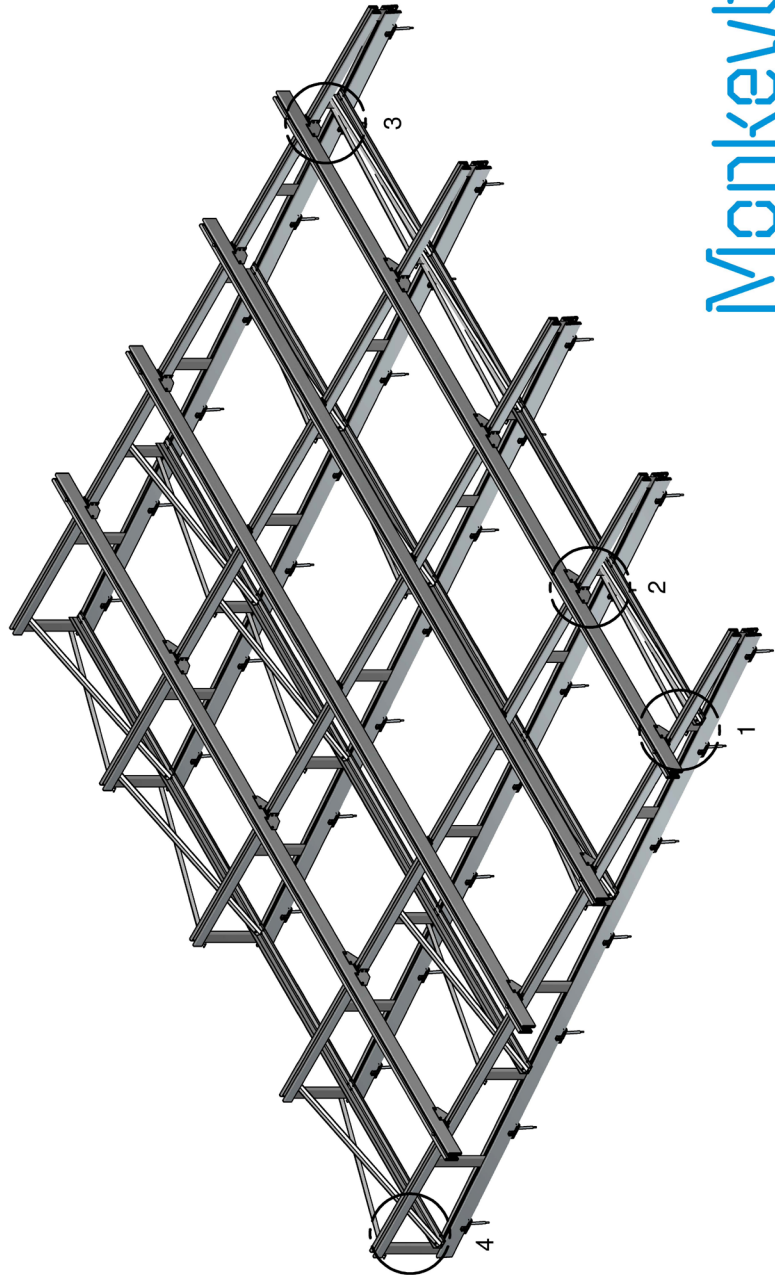
DETAIL 3
1:5



DETAIL 4
1:5

TYPICAL BRACING DETAIL

Trusses to be cross braced in pairs on alternating columns from the taller side.



Monkeytoe

EVERYTHING BETTER
0800 658 637 - www.monkeytoe.co.nz

Typical Skeletal Platform		18/07/2018
MONKEYTOE		A3
DWG No: 2004-SKE-01	SHEET 2 OF 2	SCALE: 1:25
DO NOT SCALE		REV: 01
		DIMENSIONS IN MILLIMETERS