

HANDRAIL

Parapet/Wall-mounted Handrail

CODE: HR02

PRODUCT DESCRIPTION

Aluminium 3 x rail handrail system that can be parapet-mounted for edge protection.



TYPICAL USES / APPLICATIONS

- Anywhere a safe working environment is required with a fall of 1000mm or greater
- Access routes for Monkeytoe products
- Edge of roof for fall protection
- Structural plant platform handrails
- Walkway handrails
- Under regulation height parapets

CHARACTERISTICS / ADVANTAGES

- Eliminates the need for the use of cumbersome safety harnesses and certified personnel
- No static / safety line required
- Permanent handrail system eliminates the hazard rather than minimising it
- Prefabricated modular componentry ensures fast onsite assembly
- No welding required
- Unique swivelling elbow design for all corners
- Safe working areas and edge/fall protection for all maintenance personnel
- System uses the unique Monkeytoe mounting clip when installed on rooftops
- Allows for non-certified personnel to enter hazardous zones
- Can be fitted to any roof pitch (1-45 degrees)
- Lightweight, high strength aluminium components

TECHNICAL DATA / MATERIALS

- Handrail extrusions: High tensile T6 aluminium (Can be powder coated if required)
- Elbows & end caps: Diecast aluminium
- Fixings: Stainless Steel 304 grade
- Roof connections:
 - Roofing clip - High density Polyethylene, UV-resistant
 - Galvanised roofing tek screws,
 - Neoprene sealing washers

TESTS

APPROVALS / STANDARDS

- C3 loading
- All handrails are designed and installed in accordance with AS/NZ 1657
- Building code B1

PRODUCT SPECIFICATION SHEET

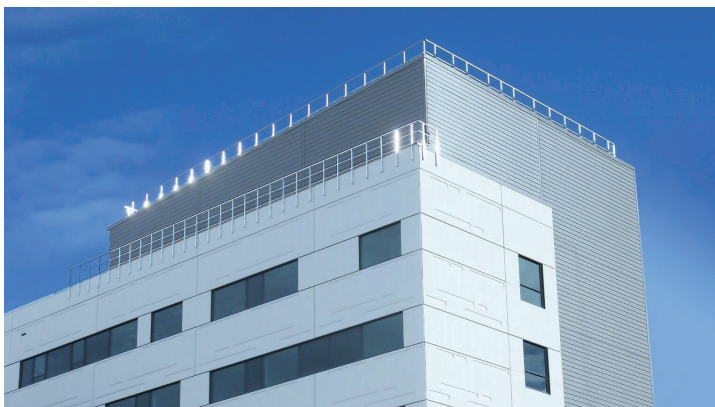
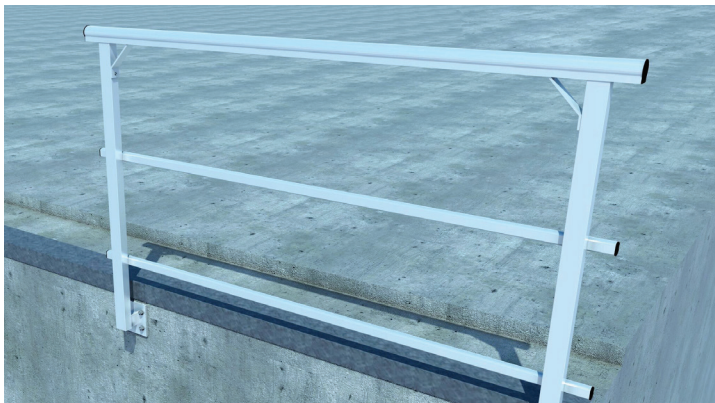
WARRANTY

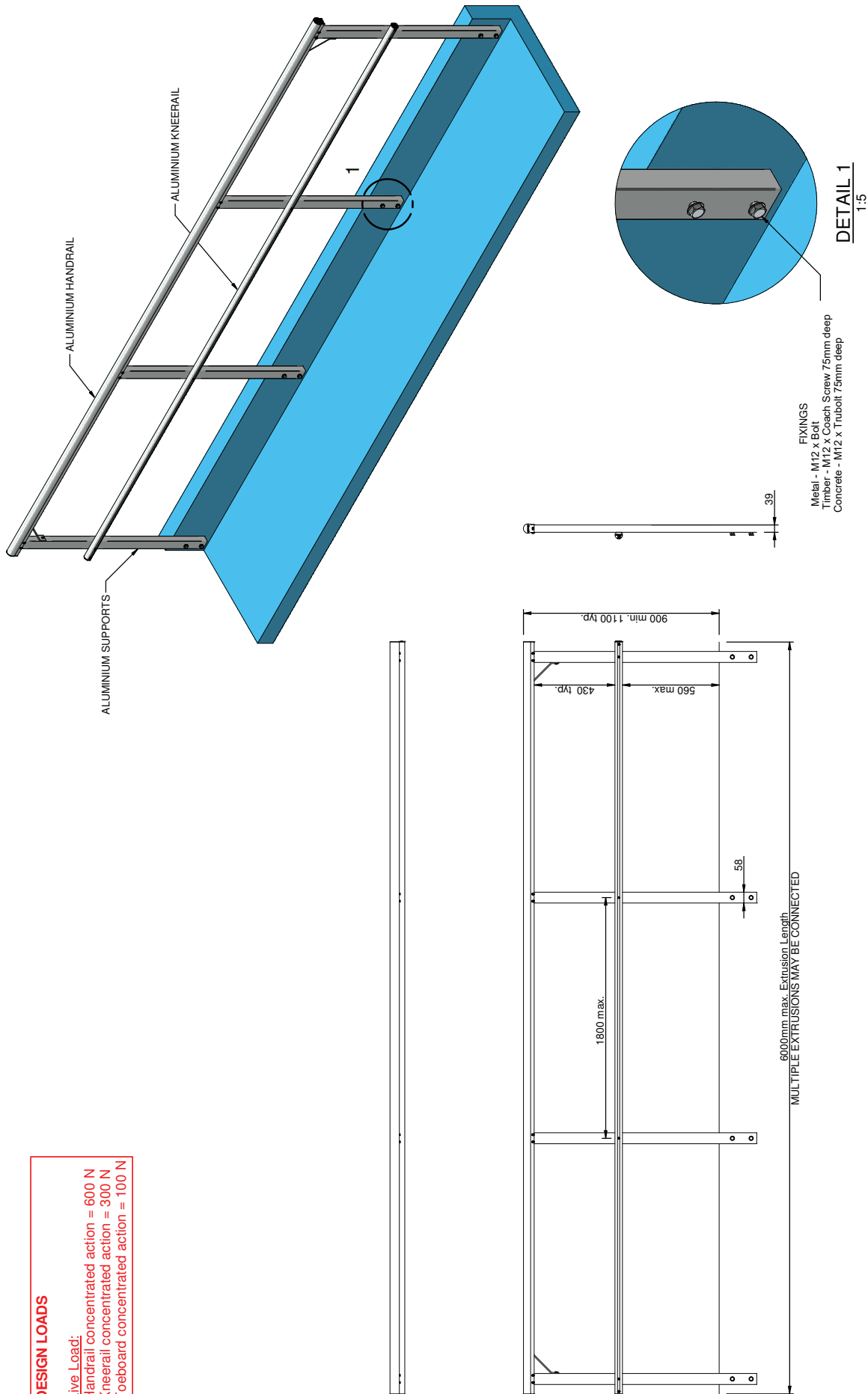
- 25 years materials and 2 years install
- Product Warranty is valid in accordance to the PS1 Engineering Standard that it has been designed to

MAINTENANCE

- It is recommended that handrails are included in the standard 'building warrant of fitness' inspections
- All damaged or loose fixings to be reported immediately to asset manager or building owner for correction

PRODUCT IMAGES



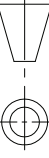


DESIGN LOADS

Live Load:
Handrail concentrated action = 600 N
Kneerail concentrated action = 300 N
Toeboard concentrated action = 100 N

NOTES:

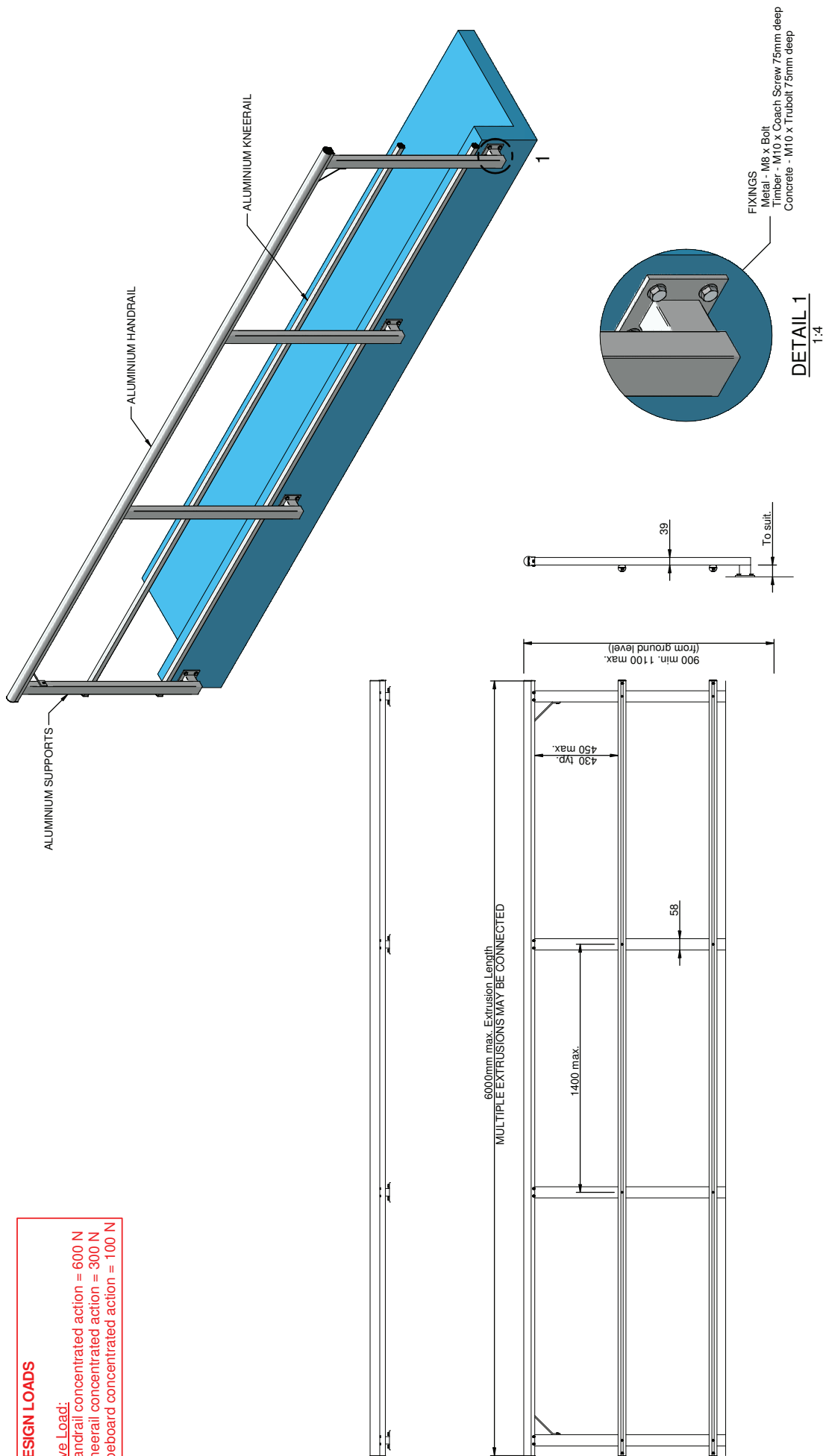
1. DESIGNED IN ACCORDANCE WITH:
 - AS/NZS 1170
 - STRUCTURAL DESIGN ACTIONS, B1 & B2 DURABILITY, F4 SAFETY FROM FALLING, D1 ACCESS ROUTES CODES
 - AS/NZS 1657:2013

Parapet Mounted Handrail	
MONKEYTOE	
DWG No: 2004-HR-PAR-01	25/07/2018
	SHEET 1 OF 1
	SCALE: 1:20
DO NOT SCALE	REV:01
DIMENSIONS IN MILLIMETERS	

Monkeytoe
EVERYTHING BETTER
0800 658 637 - www.monkeytoe.co.nz

DESIGN LOADS

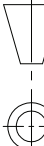
Live Load:
Handrail concentrated action = 600 N
Kneerail concentrated action = 300 N
Toeboard concentrated action = 100 N



NOTES:

1. DESIGNED IN ACCORDANCE WITH:
 - AS/NZS 1170
 - STRUCTURAL DESIGN ACTIONS, B1 & B2 DURABILITY, F4 SAFETY FROM FALLING, D1 ACCESS ROUTES CODES
 - AS/NXS 1657/2013

Monkeytoe
EVERYTHING BETTER
0800 658 637 - www.monkeytoe.co.nz

Wall Mounted Handrail	
MONKEYTOE	
DWG No: 2004-HR-WAL-01	4/09/2018
	SHEET 1 OF 1
	SCALE: 1:20
DO NOT SCALE	REV:01
DIMENSIONS IN MILLIMETERS	