



# Monkeytoe SmartGrip System

Mesh

### PRODUCT DESCRIPTION

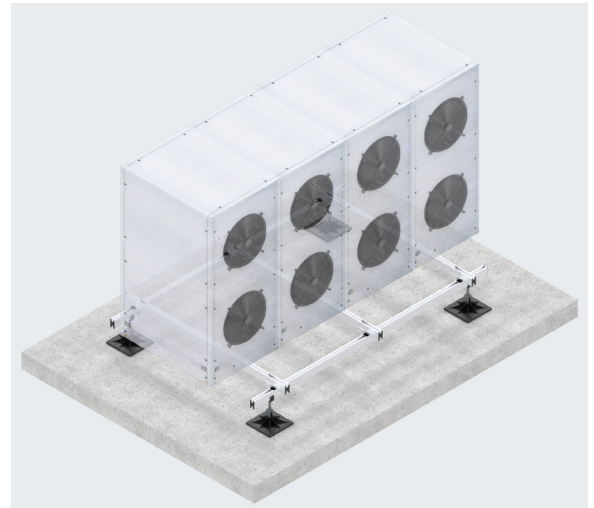
Adjustable, non penetrating, Aluminium, Mesh deck platform for surface mounting of small medium & large HVAC units and equipment.

#### TYPICAL USES / APPLICATIONS

- Membrane rooftop mounting for HVAC & equipment with raised service access
- Membrane rooftop protection for servicing & maintenance access
- Equipment support & mounting to insulated panel internal ceiling area's with raised service access
- Equipment support & mounting to concrete, paved & sealed area's with raised service access
- Portable maintenance access platforms over membrane area's

#### CHARACTERISTICS / ADVANTAGES

- No Penetration of water tight roofing or seals
- Light weight portable structure
- Modular & Adjustable design
- Quick & Easy installation
- No welding or hotwork required
- Easily extended/expanded for future requirements
- Protection of delicate or easily damaged substructures
- Pre or custom engineered solutions to suit your needs
- Easy & safe access for servicing or maintenance of equipment with Non Slip surface



### TECHNICAL DATA / MATERIALS

- High tensile structural marine-grade aluminium
- 304 Grade Stainless steel unit Fixings
- Hi grade Dacromet coated Structure fixings
- Hi Strength structural plastic feet

### TESTS

#### APPROVALS / STANDARDS

- Structural design action B1 & B2
- AS/NZS 1170 Standards Australia / New Zealand (Relevant parts)
- Aluminium Structures, Part 1: Limit State Design AS/NZS 1664.1 Standards Australia / New Zealand NZS/AS 1657

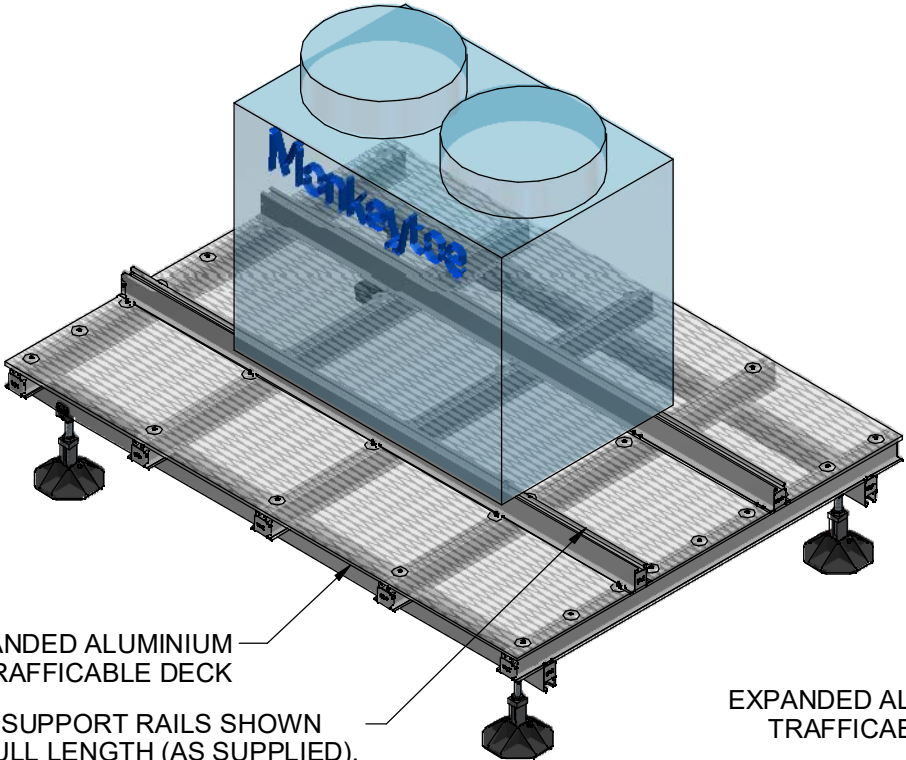
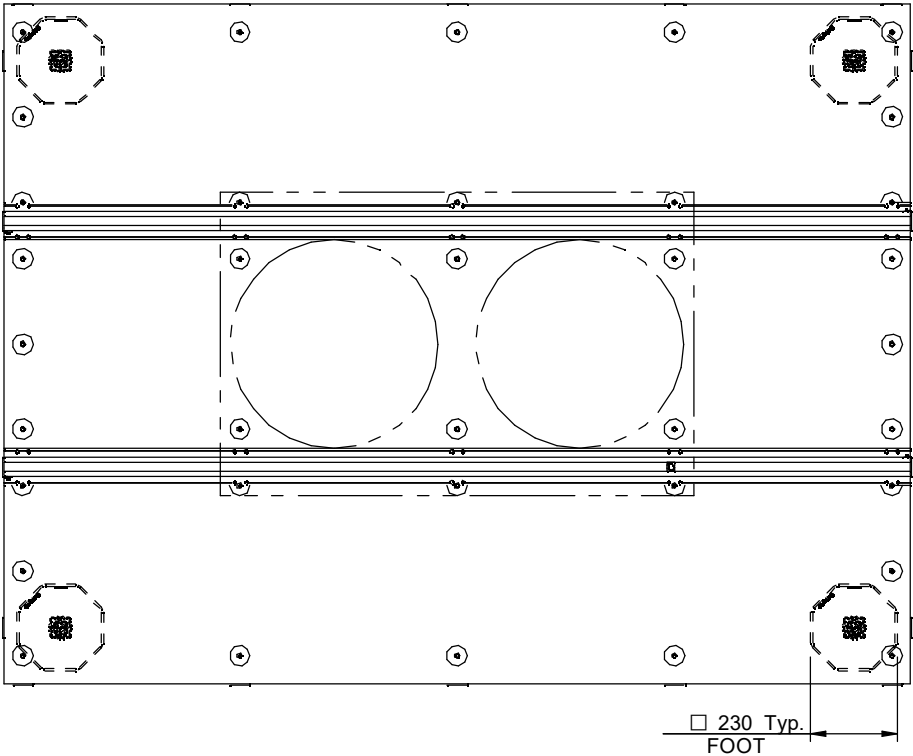
### WARRANTY

10 years product warranty

### MAINTENANCE

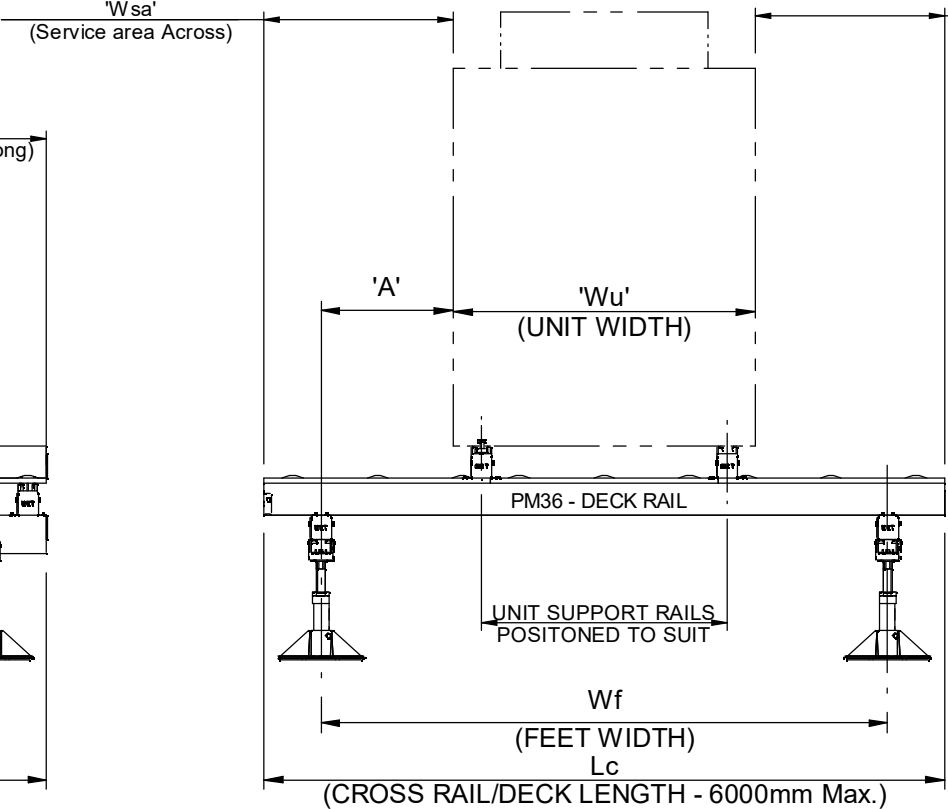
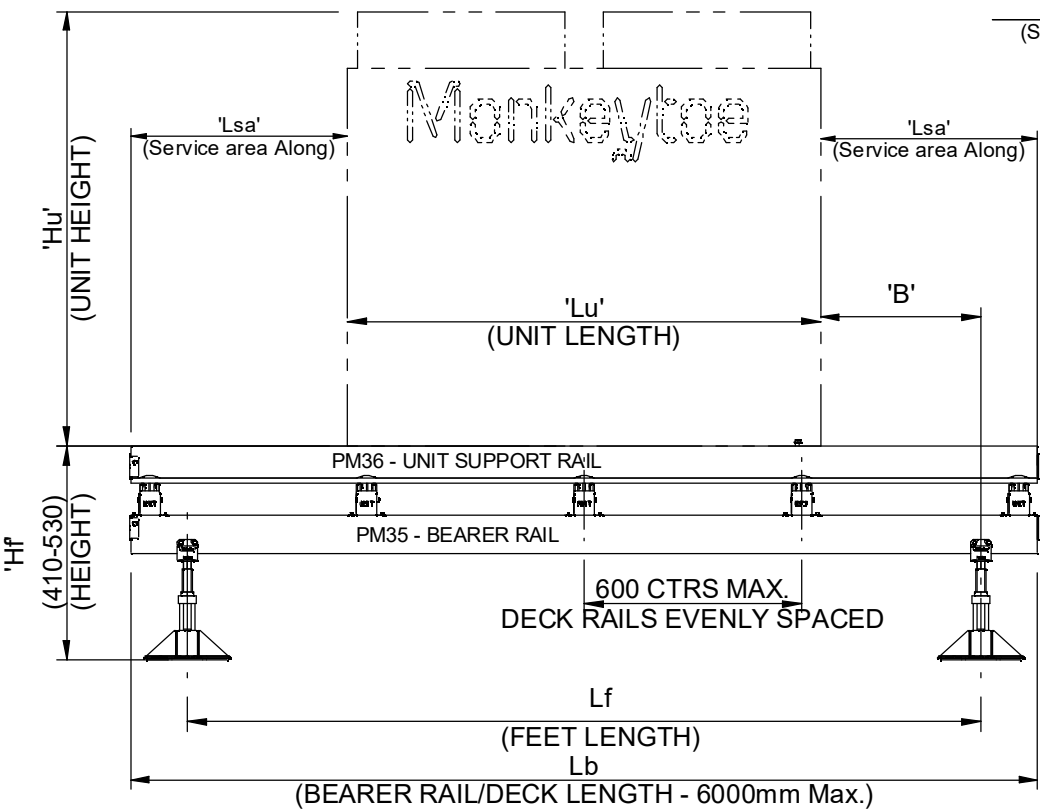
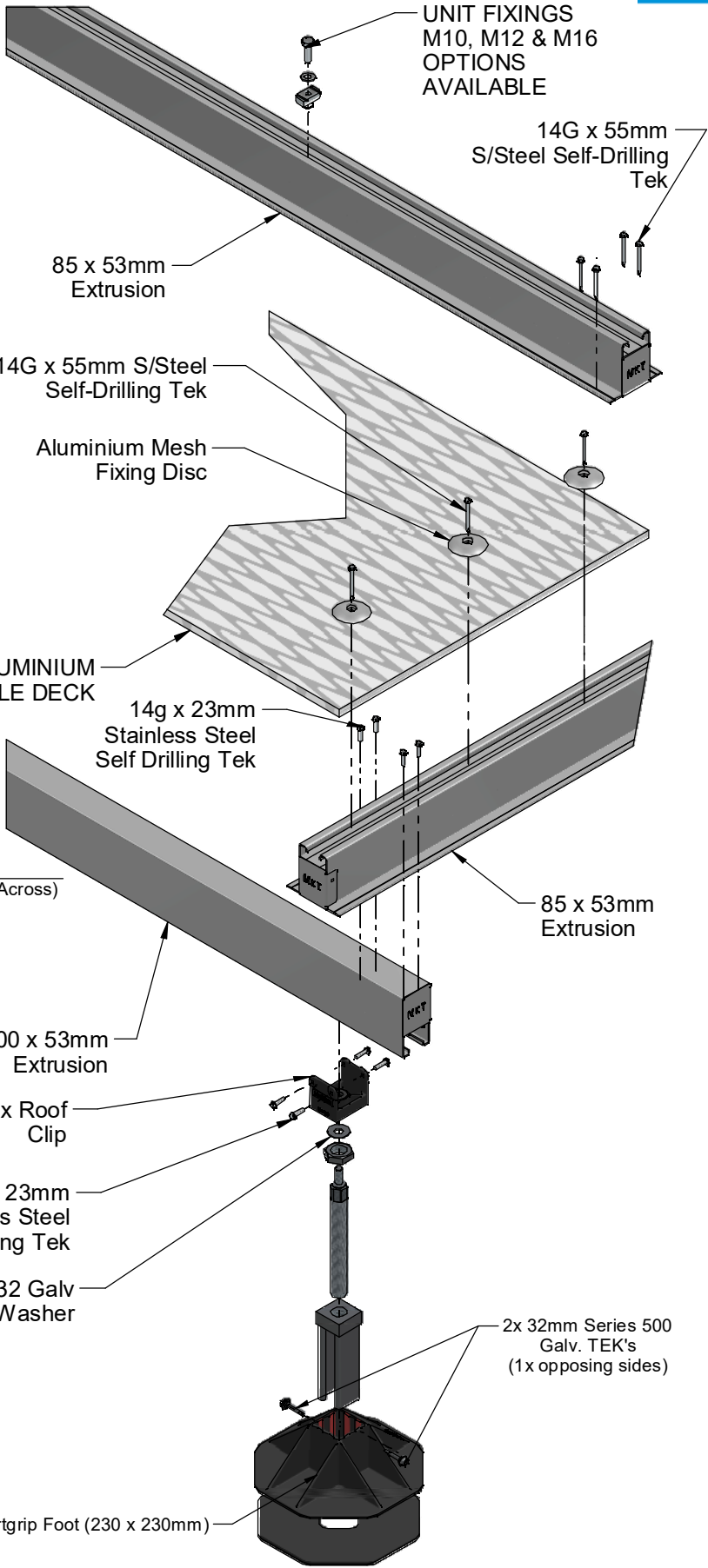
- It is recommended that plant platforms are included in the standard 'building warrant of fitness' inspections.
- All damage or loose fixings to be reported immediately to asset manager or building owner for correction.

**MAXIMUM LIVE LOAD ALLOWANCE**  
DECKS UP TO 14m2 = 1.0 kPa  
DECKS OVER 14m2 = 0.25 kPa



EXPANDED ALUMINIUM TRAFFICABLE DECK  
UNIT SUPPORT RAILS SHOWN AS FULL LENGTH (AS SUPPLIED). TRIM TO SUIT UNITS ON SITE

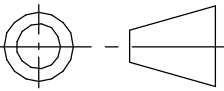
**SINGLE BAY CONFIGURATION SHOWN, SEE SHEET 2 FOR OTHER CONFIGURATION OPTIONS**



KITSET NUMBERING GUIDE						
PRIMARY CODE	# BAYS 'L' x # BAYS 'W'	# UNIT SUPPORT RAILS	BEARER RAIL LENGTH (mm) ÷ 100	DECK RAIL LENGTH (mm) ÷ 100	# UNIT FIXINGS	FIXING DIA, (metric)
CSM200.	00.00.	00.	000.	000.	00.	00
CSM200.02.01.03.048.018.08.10 (Example Kitset Code)						

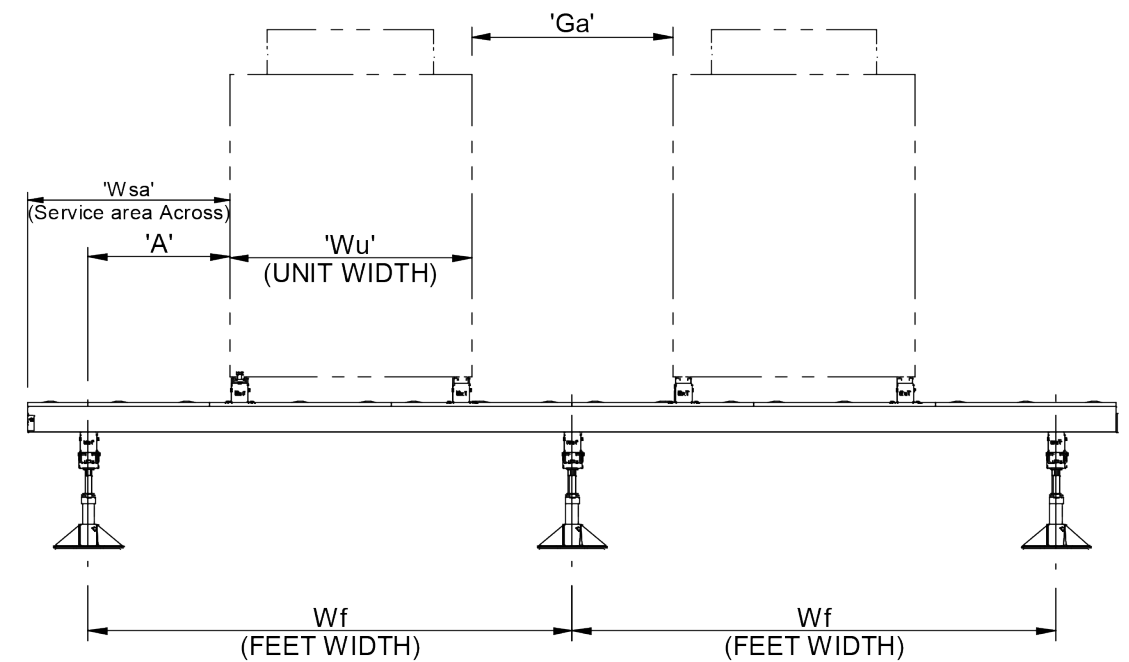
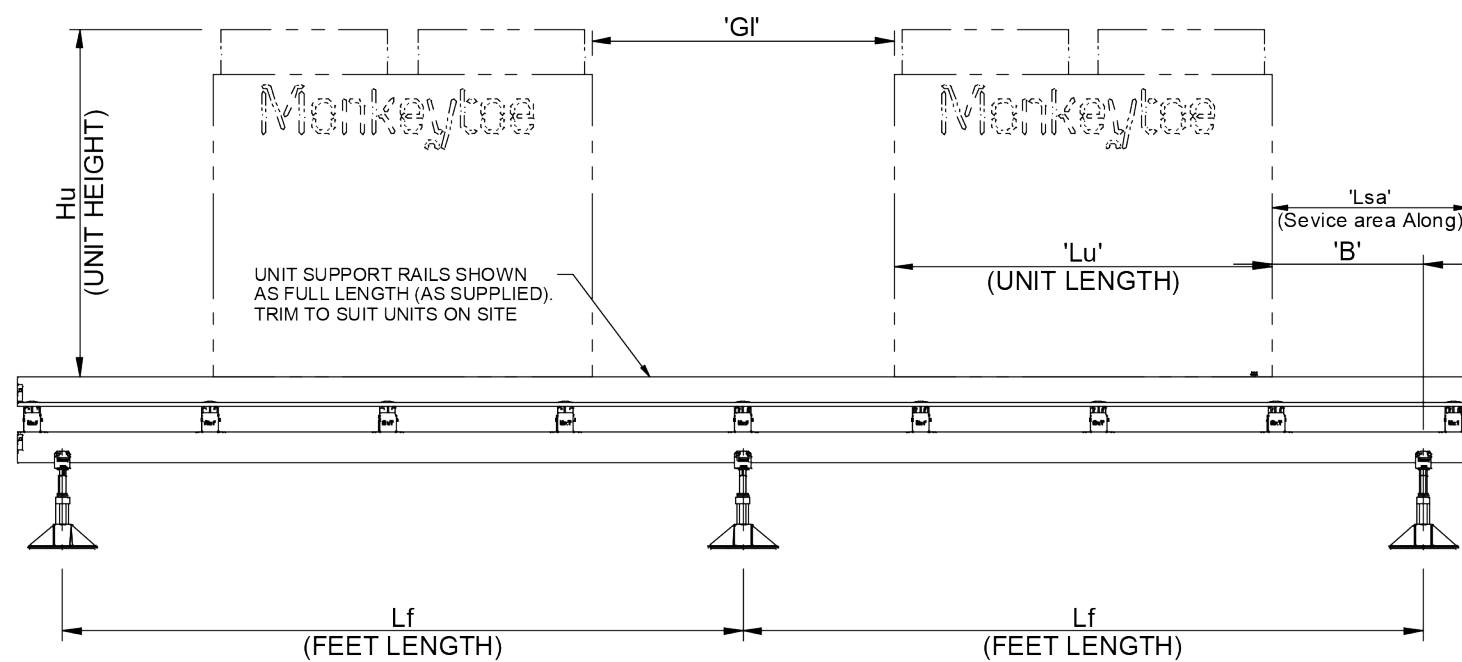
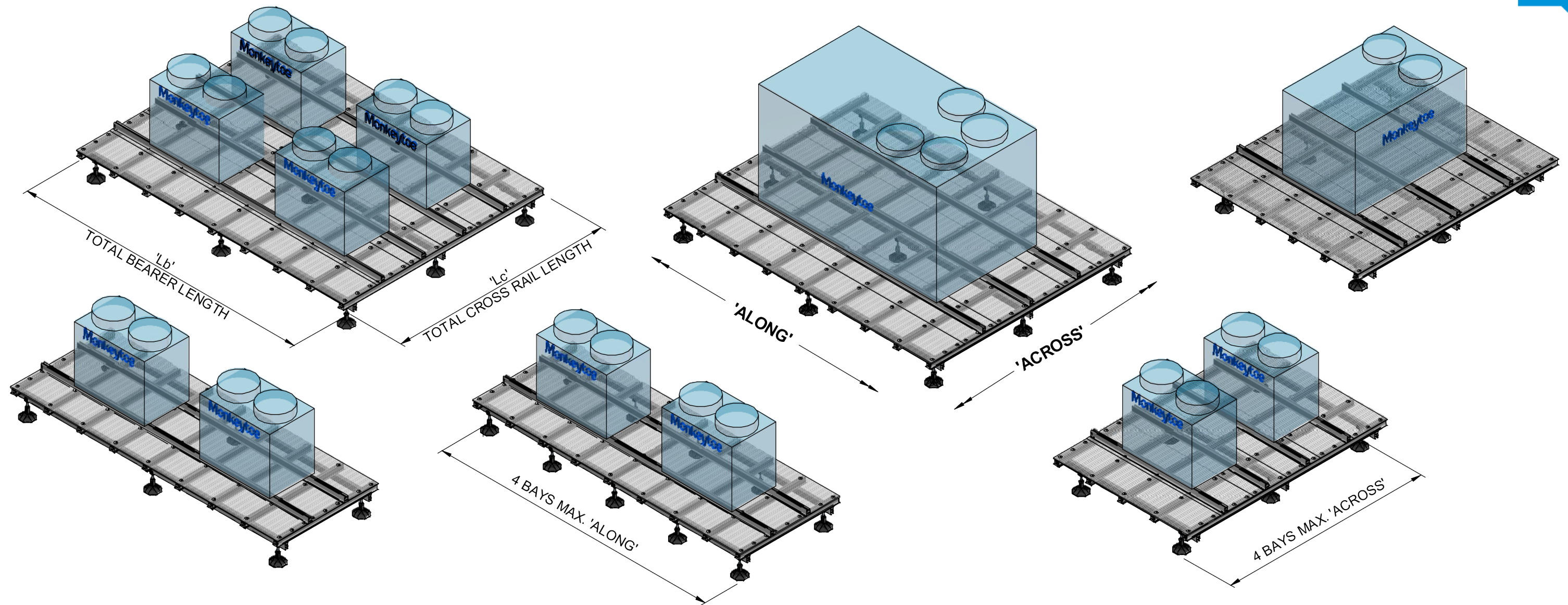
**ALL KITSETS ARE TO BE SPECIFIED USING THE 'CSM000.ENG.CALC' CALCULATOR TO ENSURE ENGINEERING SUITABILITY**

**Monkeytoe**  
EVERYTHING BETTER  
0800 658 637 - [www.monkeytoe.co.nz](http://www.monkeytoe.co.nz)

'SmartGrip', Unit Mounting Deck ASSY MONKEYTOE MOUNTING SOLUTIONS		
DWG No: 2004-CSM200-1	6/07/2023	
	SHEET 1 OF 2	A3
	SCALE: 1:20	REV:03
	DO NOT SCALE	DIMENSIONS IN MILLIMETERS

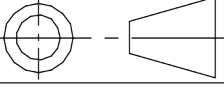
This drawing and associated design is the copyright and property of Monkeytoe Ltd. It shall not be used for any purpose or project, without prior written consent other than that designated by Monkeytoe Ltd.©





Monkeytoe

EVERYTHING BETTER  
0800 658 637 - [www.monkeytoe.co.nz](http://www.monkeytoe.co.nz)

'SmartGrip', Unit Mounting Deck ASSY MONKEYTOE MOUNTING SOLUTIONS		
DWG No: 2004-CSM200-1		6/07/2023
 DO NOT SCALE	SHEET 2 OF 2	
	SCALE: 1:25 DIMENSIONS IN MILLIMETERS	A3 REV:03



# Monkeytoe SmartGrip System

## Skeletal

### PRODUCT DESCRIPTION

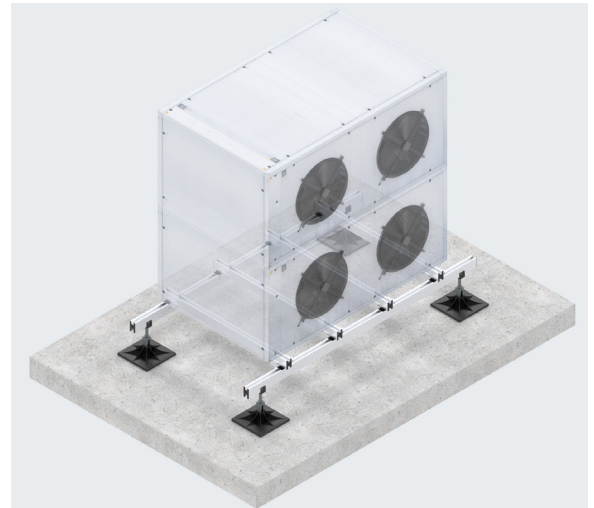
Adjustable, non penetrating, Aluminium, skeletal frame system for surface mounting of small medium & large HVAC units and equipment.

#### TYPICAL USES / APPLICATIONS

- Membrane rooftop mounting for HVAC & equipment
- Equipment or Piping support & mounting to insulated panel internal ceiling area's
- Equipment or Piping support & mounting to concrete, paved & sealed area's

#### CHARACTERISTICS / ADVANTAGES

- No Penetration of water tight roofing or seals
- Light weight portable structure
- Modular & Adjustable design
- Quick & Easy installation
- No welding or hotwork required
- Easily extended/expanded for future requirements
- Protection of fragile or easily damaged substructures
- M10 sliding nut feature for fast and simple installation of equipment
- Pre or custom engineered solutions to suit your needs



### TECHNICAL DATA / MATERIALS

- High tensile structural marine-grade aluminium
- 304 Grade Stainless steel unit Fixings
- Hi grade Dacromet coated Structure fixings
- Hi Strength structural plastic feet

### TESTS

#### APPROVALS / STANDARDS

- o Structural design action B1 & B2
- o AS/NZS 1170 Standards Australia / New Zealand (Relevant parts)
- o Aluminium Structures, Part 1: Limit State Design AS/NZS 1664.1 Standards Australia / New Zealand NZS/AS 1657

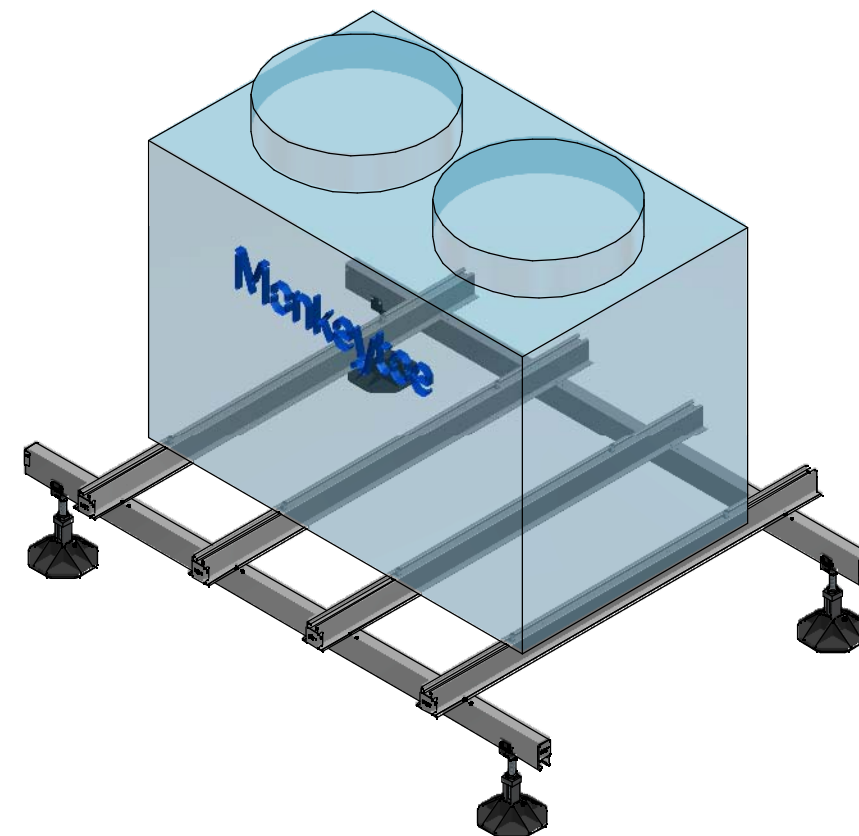
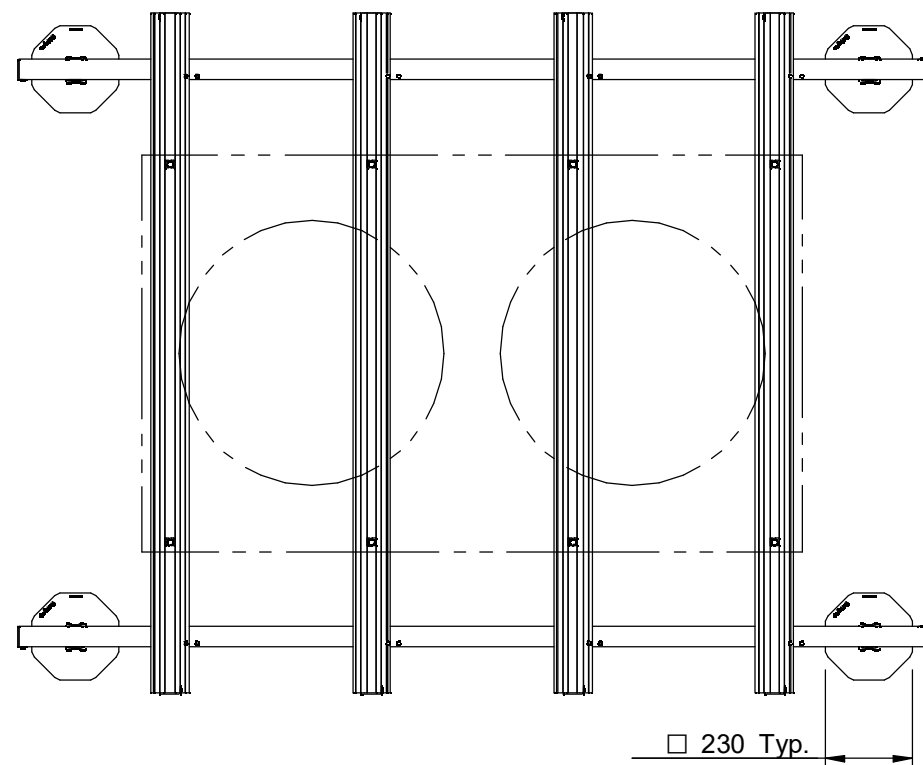
### WARRANTY

10 years product warranty

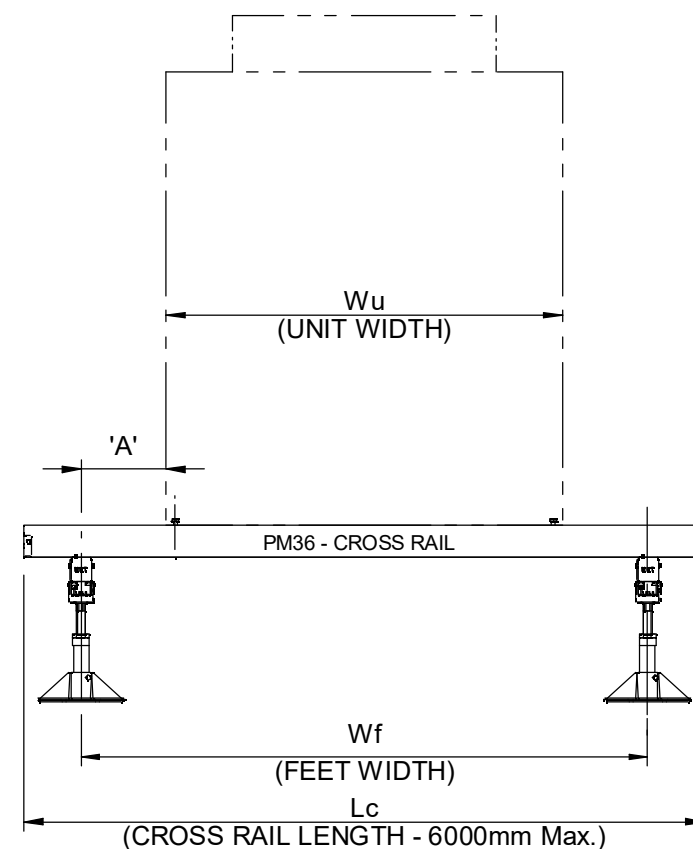
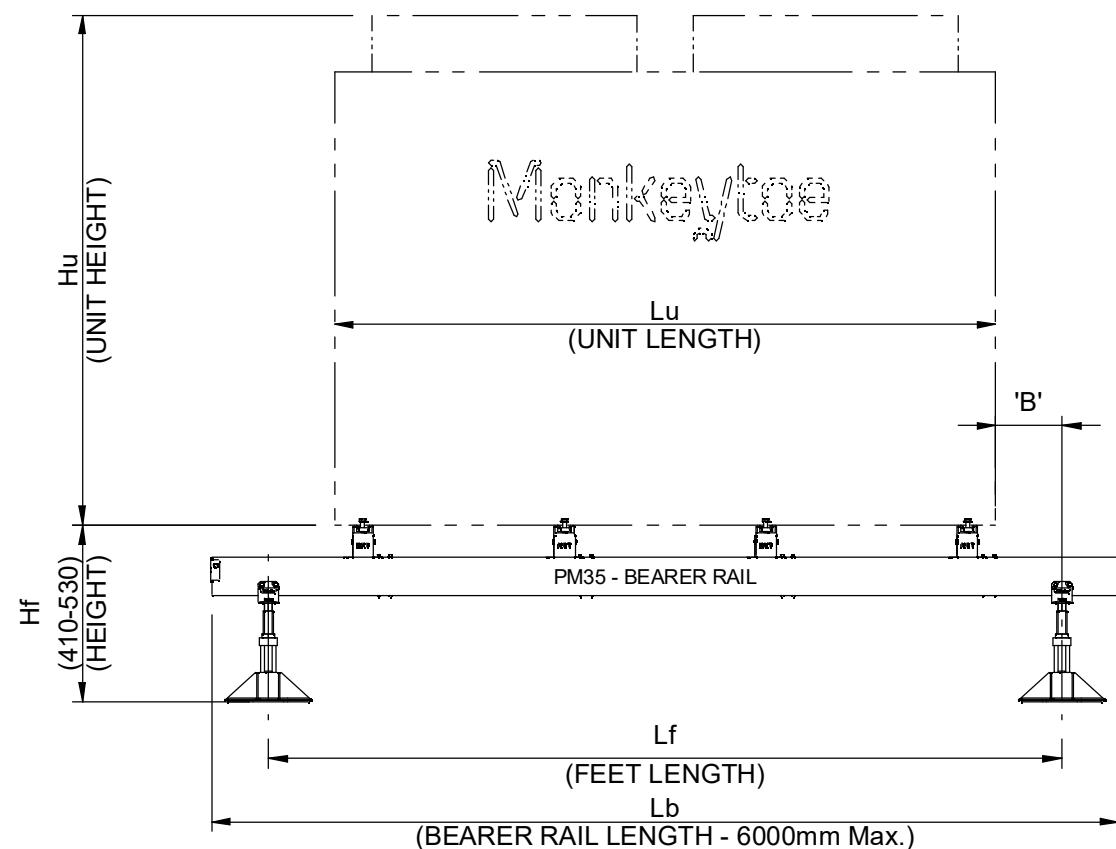
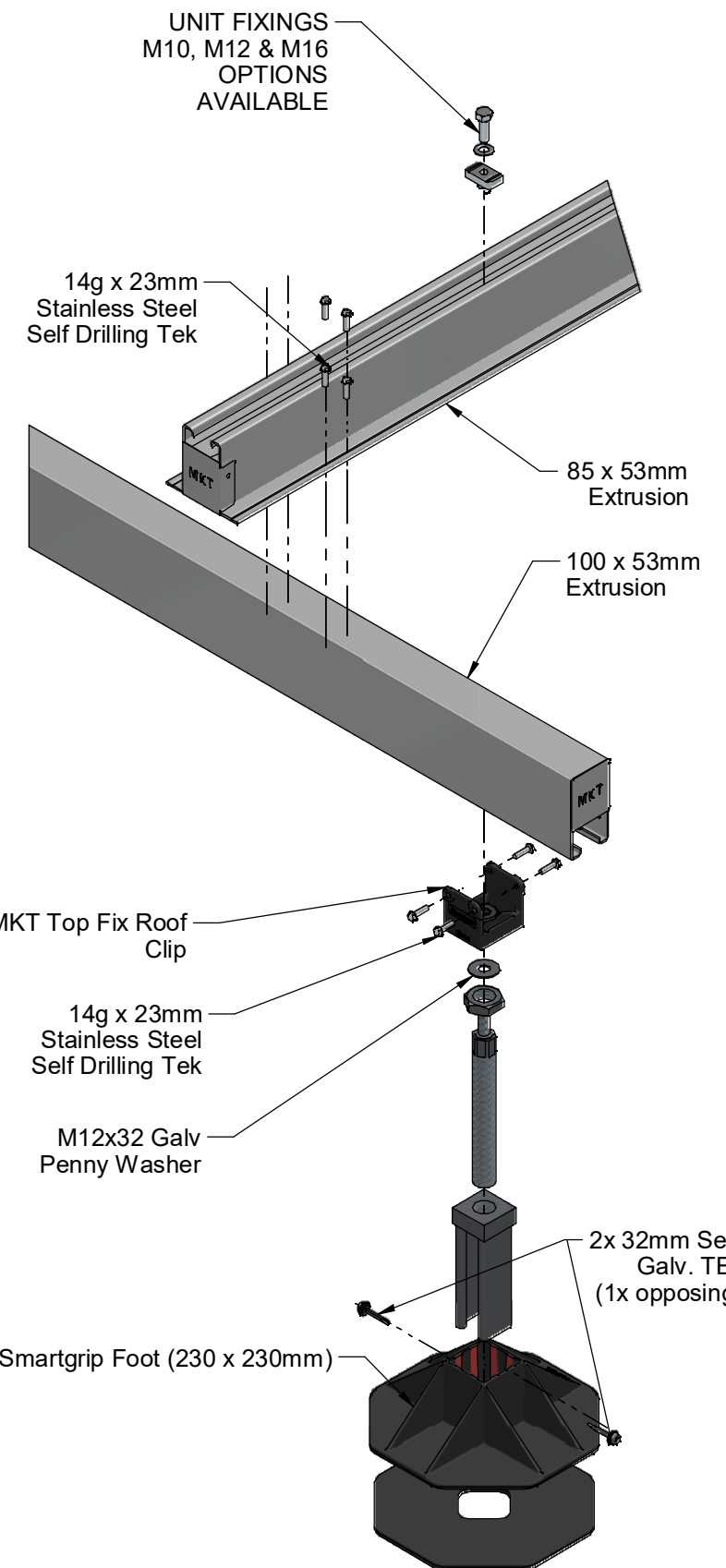
### MAINTENANCE

- It is recommended that plant platforms are included in the standard 'building warrant of fitness' inspections.
- All damage or loose fixings to be reported immediately to asset manager or building owner for correction.





SINGLE BAY CONFIGURATION SHOWN, SEE SHEET 2 FOR OTHER CONFIGURATION OPTIONS

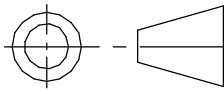


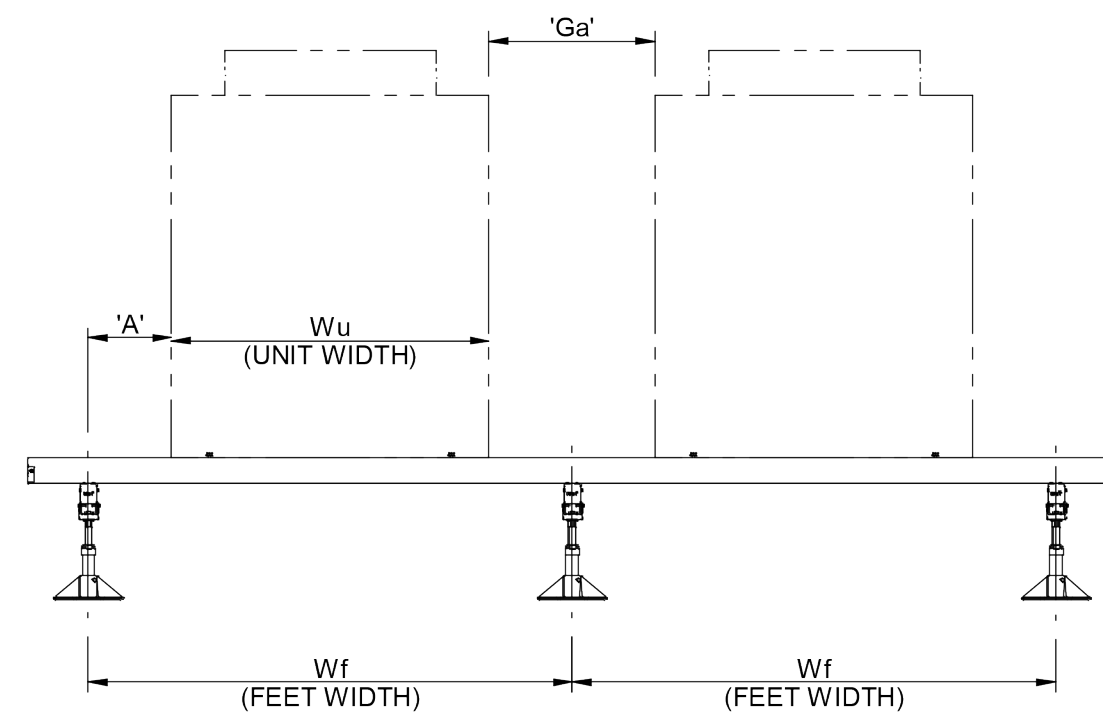
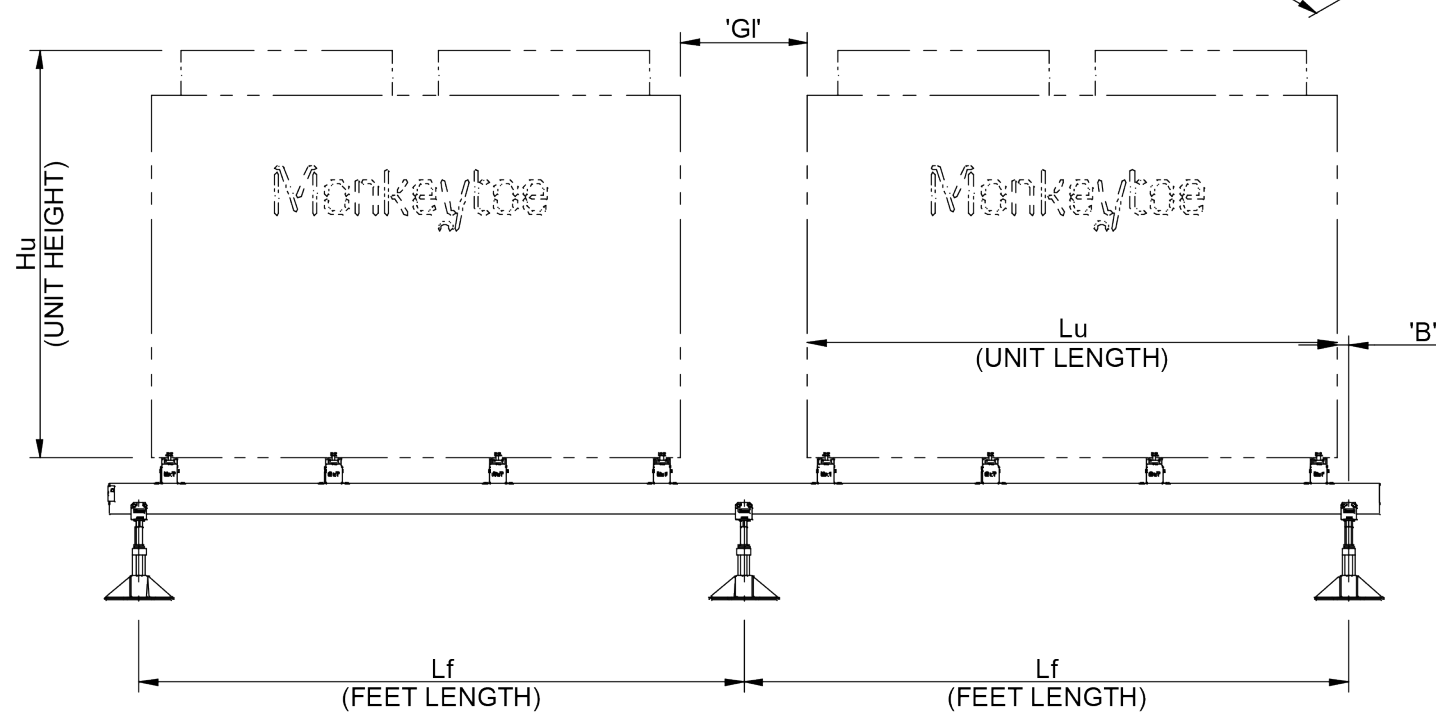
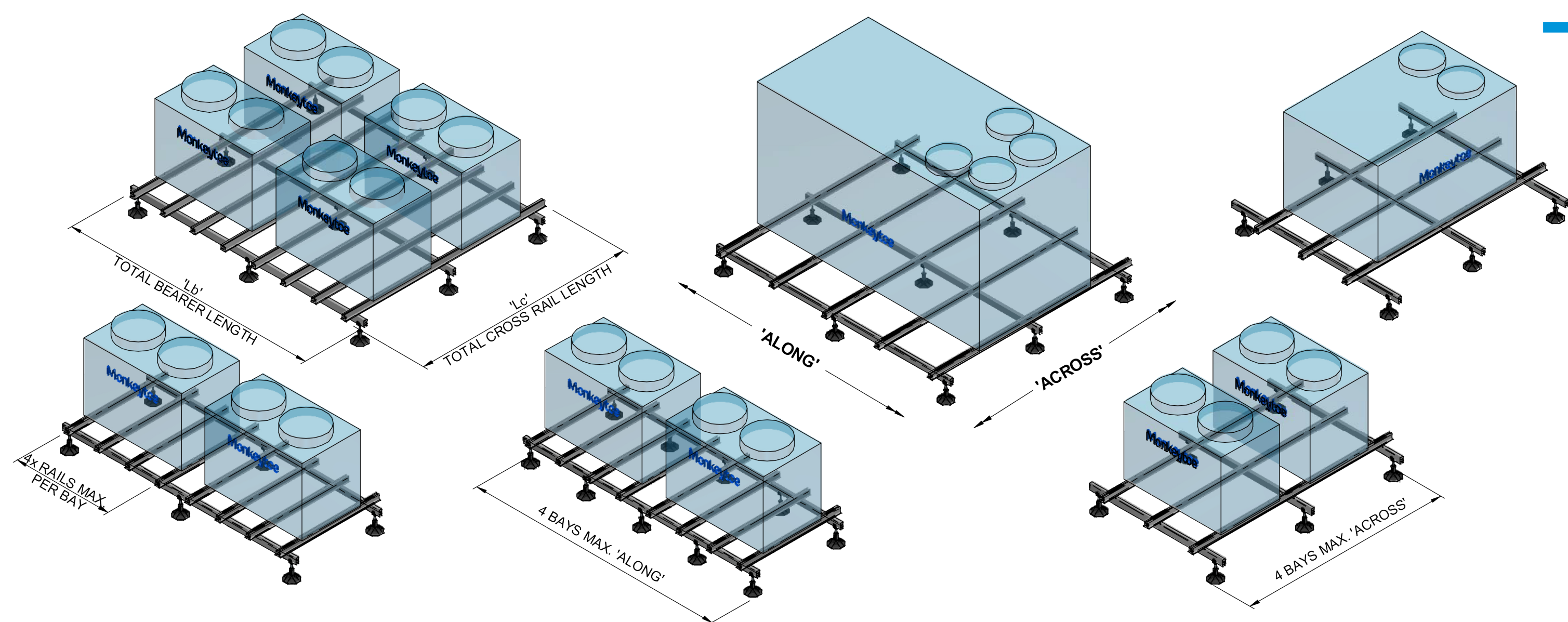
This drawing and associated design is the copyright and property of Monkeytoe Ltd. It shall not be used for any purpose or project, without prior written consent other than that designated by Monkeytoe Ltd. ©

KITSET NUMBERING GUIDE						
PRIMARY CODE	# BAYS 'L' x # BAYS 'W'	# CROSS RAILS	BEARER RAIL LENGTH (mm) ÷ 100	CROSS RAIL LENGTH (mm) ÷ 100	# UNIT FIXINGS	FIXING DIA. (metric)
CSM100.	00.00.	00.	000.	000.	00.	00
CSM100.02.01.03.048.018.08.10 (Example Kitset Code)						

**ALL KITSETS ARE TO BE SPECIFIED USING THE 'CSM000.ENG.CALC' CALCULATOR TO ENSURE ENGINEERING SUITABILITY**

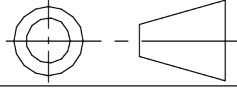
**Monkeytoe**  
EVERYTHING BETTER  
0800 658 637 - [www.monkeytoe.co.nz](http://www.monkeytoe.co.nz)

'SmartGrip', Skeletal Unit Mounting Frame ASSY MONKEYTOE MOUNTING SOLUTIONS		
DWG No: 2004-CSM100-1	6/07/2023	
 DO NOT SCALE	SHEET 1 OF 2	A3
	SCALE: 1:20	REV:04
	DIMENSIONS IN MILLIMETERS	



Monkeytoe

EVERYTHING BETTER  
0800 658 637 - [www.monkeytoe.co.nz](http://www.monkeytoe.co.nz)

'SmartGrip', Skeletal Unit Mounting Frame ASSY		
MONKEYTOE MOUNTING SOLUTIONS		
DWG No: 2004-CSM100-1		6/07/2023
 DO NOT SCALE	SHEET 2 OF 2	
	SCALE: 1:25	
	DIMENSIONS IN MILLIMETERS	
		A3 REV:04