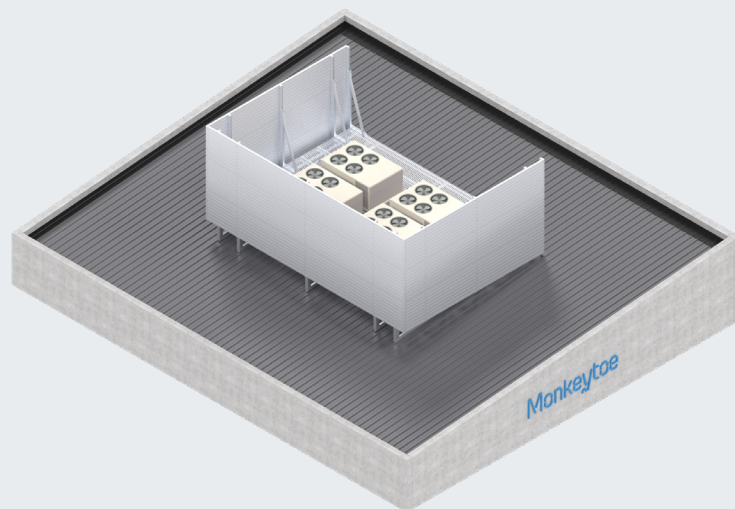


# HushMonkey - Absorptive (Double-layer) Acoustic Screening



### PRODUCT DESCRIPTION

The HushMonkey Absorptive Acoustic Panel is an easy-to-install double-layer sound absorbing wall system that is innovative, functional and versatile.

### TYPICAL USES / APPLICATIONS

- Perfect for a wide range of industrial applications
- Equipment platform screening
- Plantrooms
- Machine enclosures
- Data centres
- Hospitals
- Generator/Compressor Enclosures
- Power Stations
- Factories/Warehouses
- Airports
- Outdoor sound control walls

### CHARACTERISTICS / ADVANTAGES

- Highly durable greenstar rated absorbing material with a minimum 60% recycled material content
- Extensively third party tested For acoustic performance and durability
- Efficient sound-absorbing material, specifically developed for noise reduction in external plant enclosures. This is the result of collaboration with Autex Acoustics and Monkeytoe.
- Additional options with higher performance available for specific applications
- Innovative, economical and straightforward installation system
- As Installed acoustic performance can be modelled very accurately with results of extensive field and laboratory testing.
- Easily adaptable and modular as requirements change
- Can be run vertical or horizontally for visual effect
- Pre engineered system configurable for all wind loads
- Highly rigid extrusion profile offers greater sound reduction than sheet type barriers

### TECHNICAL DATA / MATERIALS

- Materials - Facing: 254 x 40mm architectural marine-grade aluminium channel
- Surface weight - 12.5kg/m<sup>2</sup>
- Materials - Inner: Recycled polymer absorptive core
- Optional powder-coated exterior

### TESTS

#### APPROVALS / STANDARDS

- Structural design action B1 & B2
- AS/NZS 1170 Standards Australia / New Zealand (Relevant parts)

### WARRANTY

- 10 years product warranty
- Product Warranty is valid in accordance to the PS1 Engineering Standard that it has been designed to

### MAINTENANCE

- It is recommended that plant platforms are included in the standard 'building warrant of fitness' inspections.
- All damage or loose fixings to be reported immediately to asset manager or building owner for correction.

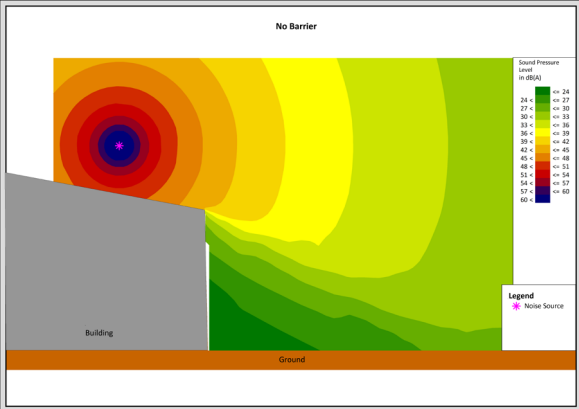


Fig.1 - No barrier

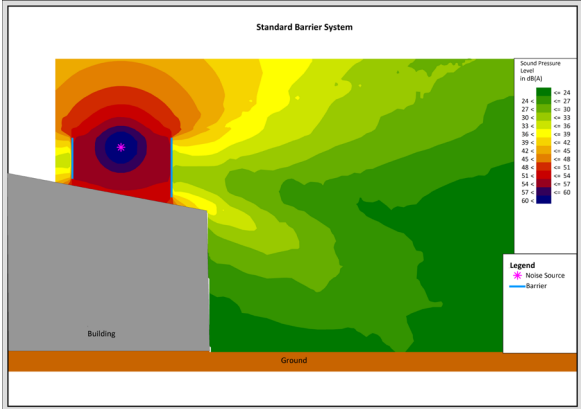


Fig.2 - Standard barrier

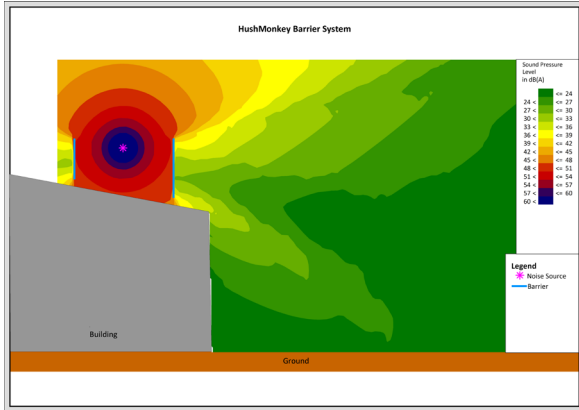


Fig.3 - HushMonkey barrier

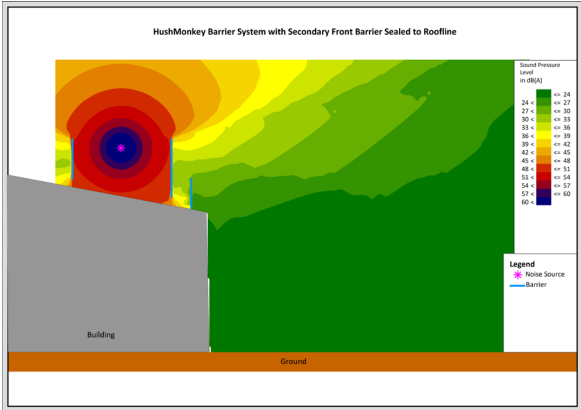
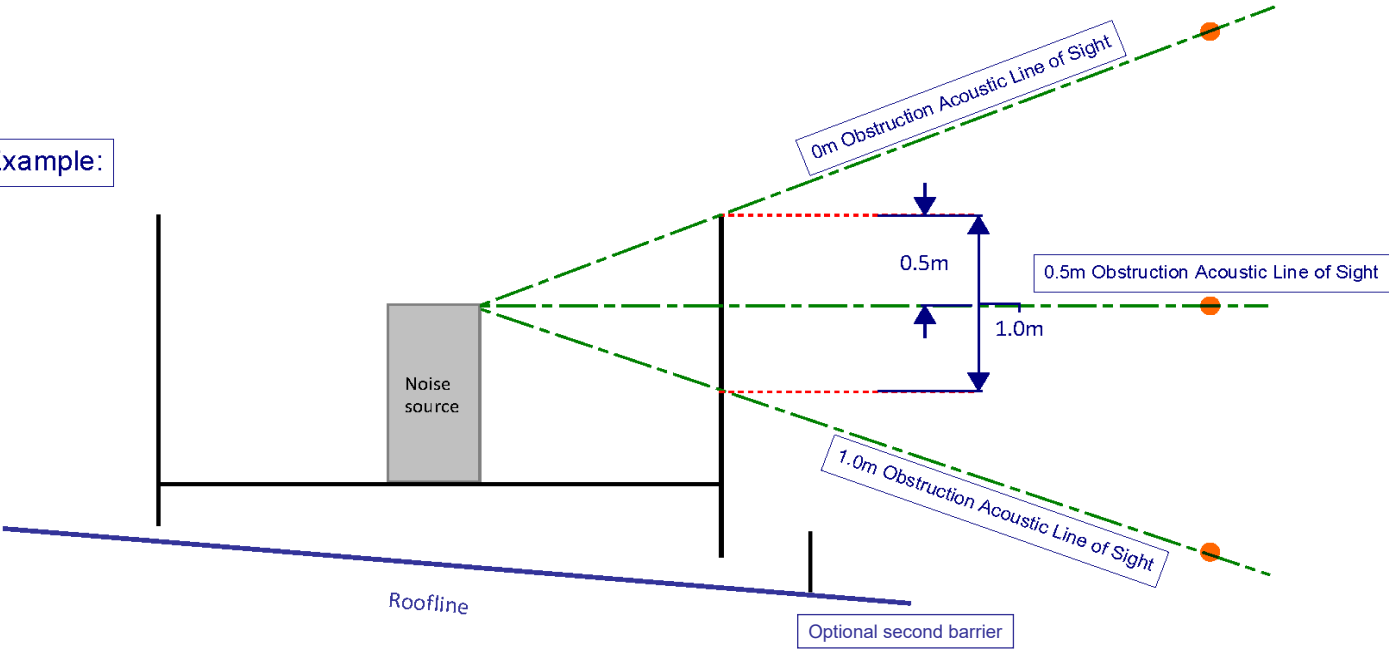


Fig.4 - HushMonkey barrier with second front barrier sealed to roofline to allow airflow

OBSTRUCTION DIAGRAMS

Example:



Single Layer.

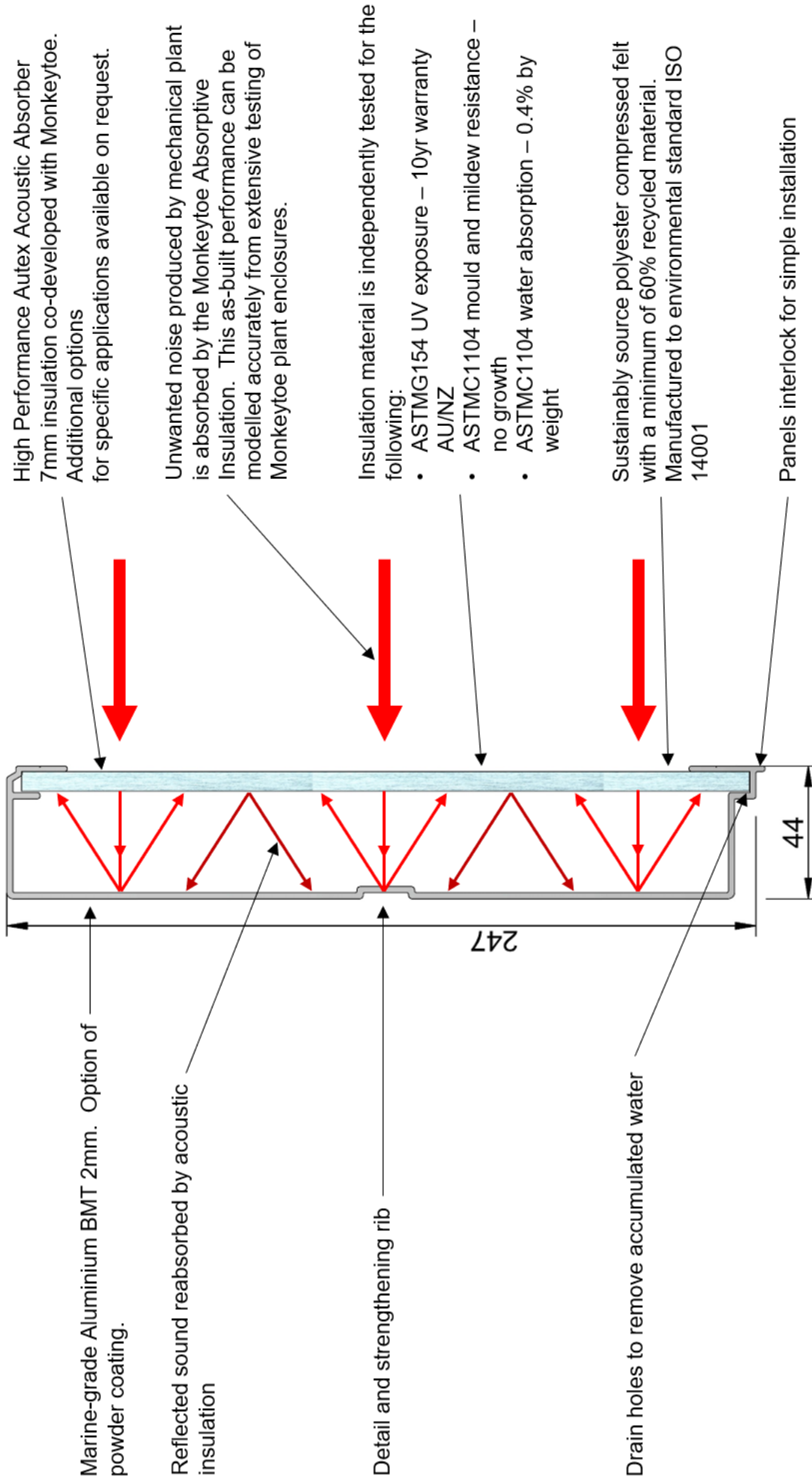
HUSHMONKEY PANEL SOUND REDUCTION INDEX		
Frequency (Hz)	dB	
	50	14.4
	63	18.1
	80	15.9
	100	15.6
	125	14.3
	160	14.1
	200	14.2
	250	14.8
	315	16.5
	400	20.1
	500	22.5
	630	25.8
	800	28.3
	1000	28.0
	1250	31.9
	1600	31.6
	2000	28.7
	2500	29.3
	3150	31.6
	4000	33.1
	5000	32.8
Rw Rating		26
Sound Reduction Index in accordance with ISO 10140		

HUSHMONKEY PANEL ACOUSTIC ABSORPTION PROPERTIES		
Frequency (Hz)	Absorption Coefficient, $\alpha$	
	50	-
	63	-
	80	-
	100	0.05
	125	0.09
	160	0.14
	200	0.18
	250	0.24
	315	0.30
	400	0.47
	500	0.59
	630	0.72
	800	0.80
	1000	0.89
	1250	0.97
	1600	0.97
	2000	0.98
	2500	0.96
	3150	0.89
	4000	0.82
	5000	0.76
NRC Rating		0.7
HushMonkey Panel Acoustic Absorption Properties in accordance with ISO 354 - 2003		

Double Layer.

HUSHMONKEY PANEL SOUND REDUCTION INDEX		
Frequency (Hz)	dB	
	50	15.1
	63	18.3
	80	14.7
	100	14.6
	125	15.2
	160	14.1
	200	13.9
	250	15.2
	315	17.2
	400	21.2
	500	24.4
	630	28.2
	800	31.2
	1000	30.6
	1250	34.5
	1600	34.8
	2000	32.7
	2500	33.5
	3150	35.6
	4000	37.1
	5000	37.0
Rw Rating		28
Sound Reduction Index in accordance with ISO 10140		

HUSHMONKEY PANEL ACOUSTIC ABSORPTION PROPERTIES		
Frequency (Hz)	Absorption Coefficient, $\alpha$	
	50	-
	63	-
	80	-
	100	0.14
	125	0.14
	160	0.26
	200	0.36
	250	0.46
	315	0.60
	400	0.74
	500	0.84
	630	0.92
	800	0.98
	1000	1.03
	1250	1.03
	1600	1.02
	2000	1.00
	2500	0.97
	3150	0.90
	4000	0.86
	5000	0.83
NRC Rating		0.75
HushMonkey Panel Acoustic Absorption Properties in accordance with ISO 354 - 2003		



High Performance Autex Acoustic Absorber  
7mm insulation co-developed with Monkeytoe.  
Additional options  
for specific applications available on request.

Unwanted noise produced by mechanical plant  
is absorbed by the Monkeytoe Absorptive  
Insulation. This as-built performance can be  
modelled accurately from extensive testing of  
Monkeytoe plant enclosures.

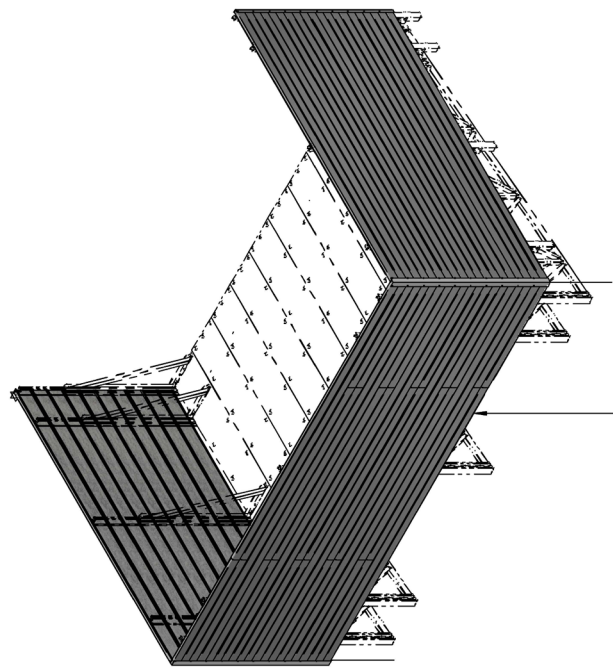
Insulation material is independently tested for the  
following:

- ASTM G154 UV exposure – 10yr warranty AU/NZ
- ASTM C1104 mould and mildew resistance – no growth
- ASTM C1104 water absorption – 0.4% by weight

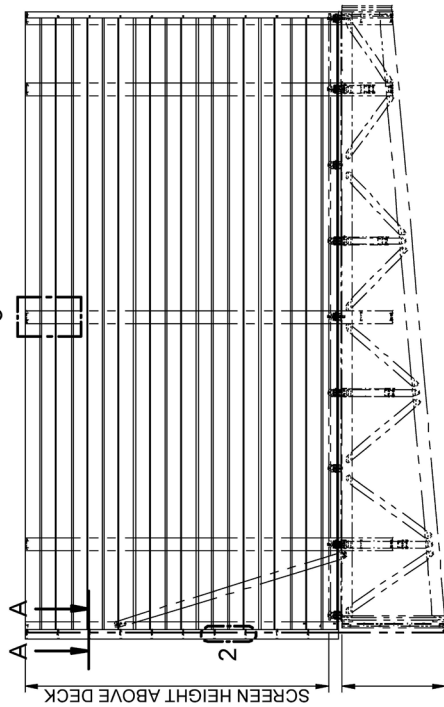
Sustainably source polyester compressed felt  
with a minimum of 60% recycled material.  
Manufactured to environmental standard ISO  
14001

Panels interlock for simple installation

Descriptive Cross Section View			
Hushmonkey Absorptive Panelling			
DWG No: 3528- MCSV-1		13/08/2020	
	SHEET 1 OF 1	A3	REV:01
	SCALE: 1:1.25	DIMENSIONS IN MILLIMETERS	
	DO NOT SCALE		

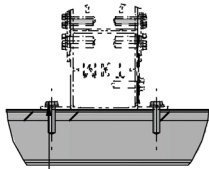


WHEN THERE IS A JOIN IN THE  
ACOUSTIC EXTRUSION, ALTERNATE  
LEFT TO RIGHT AND APPLY JOINER PLATE

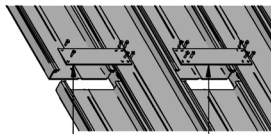


REFER TO PLATFORM SPECIFIC DETAILS

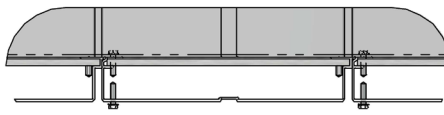
SIDE ELEVATION



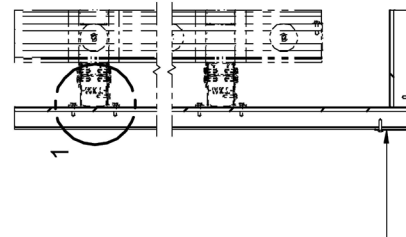
DETAIL 1  
1:4



DETAIL 2  
1:5



DETAIL 3  
1:10



SECTION A-A  
1:10

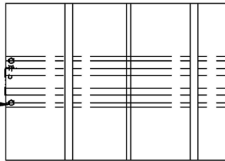
75x75x2.5/3mm EA - OUTSIDE CORNER  
FIXED WITH 12G 22mm TEKs  
@ 245mm CTRS

INSULATION SLIDES INTO  
ACOUSTIC EXTRUSION

FIXED WITH 12G 22mm TEKs  
BOTH SIDES OF SCREEN SUPPORT  
FOLLOWING V-GROVE IN  
ACOUSTIC EXTRUSION

PM16 (50x50x3mm EA)  
OUTSIDE CORNER  
FIXED WITH 12G 22mm TEKs  
TOP AND BOTTOM OF  
ACOUSTIC EXTRUSION

FIXED WITH 12G 22mm TEKs  
BOTH SIDES OF SCREEN SUPPORT  
FOLLOWING V-GROVE IN  
ACOUSTIC EXTRUSION



PANEL END & NON JOIN POST FIXING DETAIL

FIXED WITH 12G 22mm TEKs  
BOTH SIDES OF SCREEN SUPPORT  
FOLLOWING V-GROVE IN  
ACOUSTIC EXTRUSION

75x75x2.5/3mm EA  
OUTSIDE CORNER  
FIXED WITH 12G 22mm TEKs  
TOP AND BOTTOM OF  
ACOUSTIC EXTRUSION

INSULATION SLIDES INTO  
ACOUSTIC EXTRUSION

DRAWN BY:	LJK
MODELED BY:	LJK
CHECKED BY:	BP/BD/LK
DATE DRAWN:	14/08/2020
LAST SAVED:	17/08/2020
MATERIAL:	SEE B.O.M.
FINISH:	MIII
TOLERANCES:	+0/-2.0/0.1"

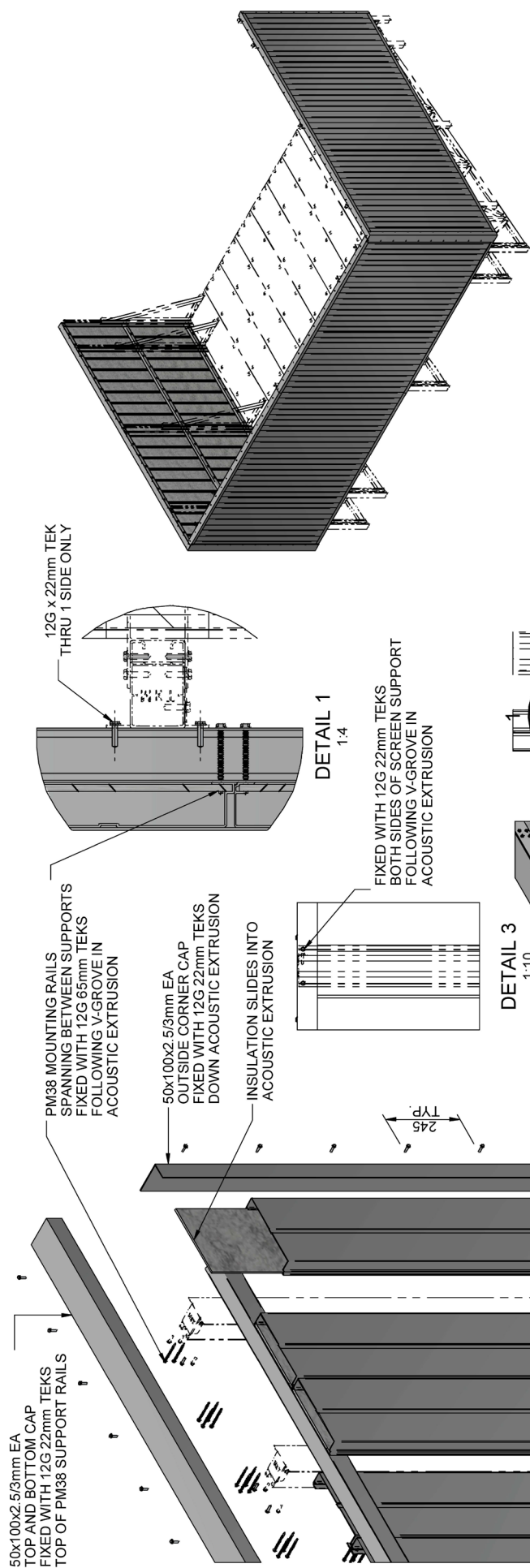
Monkeytoe

EVERYTHING BETTER  
0800 658 637 - [www.monkeytoe.co.nz](http://www.monkeytoe.co.nz)

PLATFORM ABSORPTION ACOUSTIC SCREEN INSTALL DETAILS			
MONKEYTOE - 'HUSHMONKEY'		2004	
DWG No: MPAC-ID-HAA-01	SHEET 1 OF 1		A3
DO NOT SCALE		SCALE: 1:40	
REV:01		DIMENSIONS IN MILLIMETERS	

PANEL CORNER JOIN DETAIL



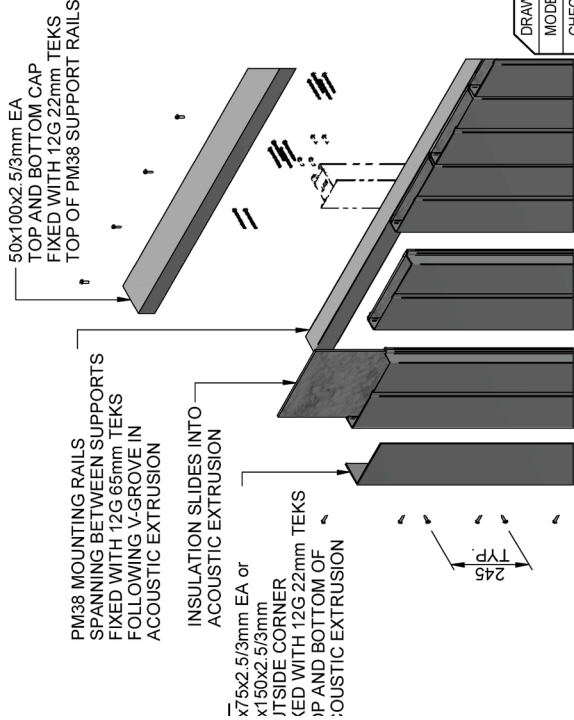


DETAIL 1  
1:4

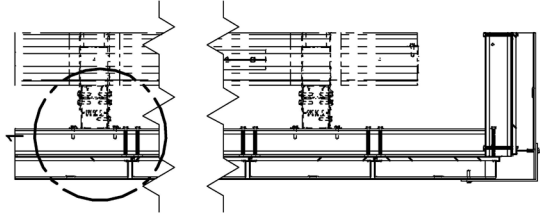
FIXED WITH 12G 22mm TEKS  
BOTH SIDES OF SCREEN SUPPORT  
FOLLOWING V-GROVE IN  
ACOUSTIC EXTRUSION

DETAIL 3  
1:10

PANEL END & NON JOIN POST FIXING DETAIL

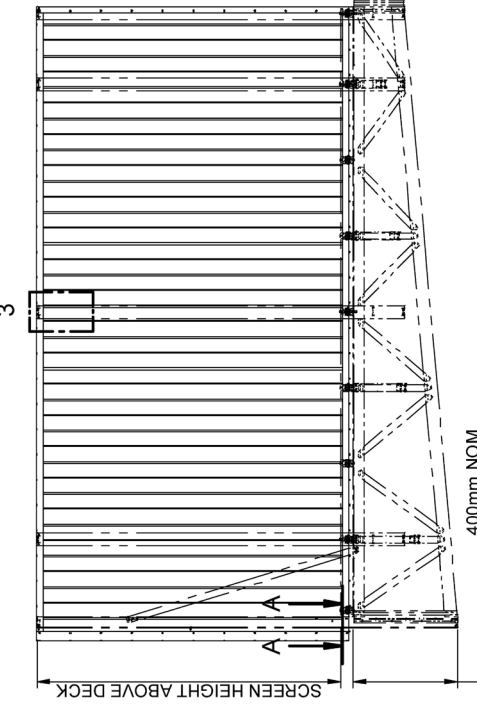


PANEL CORNER JOIN DETAIL



REFER TO PLATFORM SPECIFIC DETAILS

SIDE ELEVATION



PLATFORM VERTICAL ABSORPTION ACOUSTIC SCREEN INSTALL DETAILS			
MONKEYTOE - 'HUSHMONKEY'		2004	
DWG No: MPAC-ID-VAA-01	SHEET 1 OF 2		A3
DO NOT SCALE		SCALE: 1:40	REV:01
		DIMENSIONS IN MILLIMETERS	

Monkeytoe

EVERYTHING BETTER  
0800 658 637 - www.monkeytoe.co.nz

DRAWN BY:	LJK
MODELED BY:	LJK
CHECKED BY:	BP/BD/LK
DATE DRAWN:	14/08/2020
LAST SAVED:	17/08/2020
MATERIAL:	SEE B.O.M.
FINISH:	MIII
TOLERANCES:	+0,-2.0/0.1"

ROOF SHEETING AREA PER PM38 RAIL							
	Vertical support spacings	900mm	1200mm	1500mm	1800mm	2100mm	2400mm
KPA loading	1kpa	2400mm	2400mm	2400mm	1750mm	1100mm	750mm
	2kpa	2400mm	2400mm	1500mm	875mm	550mm	375mm
	3kpa	2400mm	2000mm	1025mm	575mm	375mm	250mm
	4kpa	2400mm	1500mm	750mm	425mm	275mm	175mm

DRAWN BY:	LJK
MODELED BY:	LJK
CHECKED BY:	BP/BD/LK
DATE DRAWN:	14/08/2020
LAST SAVED:	17/08/2020
MATERIAL:	SEE B.O.M.
FINISH:	MIII
TOLERANCES:	+0,-2.0;0.1°

Monkeytoe

EVERYTHING BETTER

0800 658 637 - [www.monkeytoe.co.nz](http://www.monkeytoe.co.nz)

PLATFORM VERTICAL ABSORPTION ACOUSTIC SCREEN INSTALL DETAILS			
MONKEYTOE - 'HUSHMONKEY'		2004	
DWG No:	MPAC-ID-VAA-01	SHEET 2 OF 2	
		SCALE: 1:1	REV:01
DO NOT SCALE		DIMENSIONS IN MILLIMETERS	