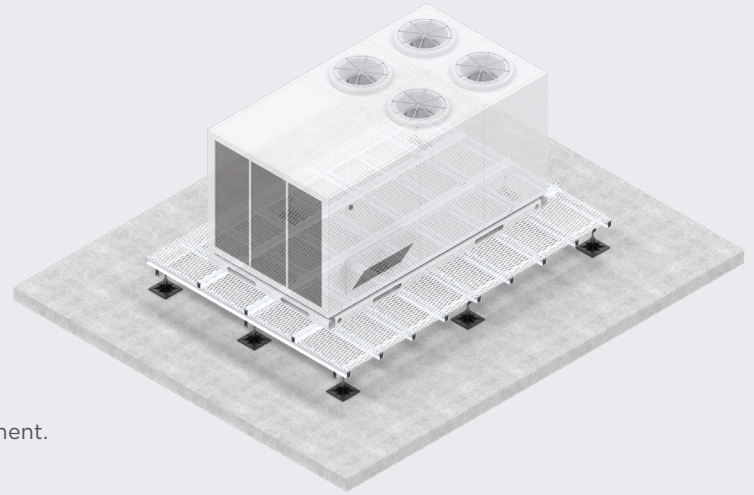


PLATFORMS

Monkeytoe Smartgrip Mesh Platform



PRODUCT DESCRIPTION

Adjustable, non penetrating, Aluminium, Mesh deck platform for surface mounting of small medium & large HVAC units and equipment.

TYPICAL USES / APPLICATIONS

- Membrane rooftop mounting for HVAC & equipment with raised service access
- Membrane rooftop protection for servicing & maintenance access
- Equipment support & mounting to insulated panel internal ceiling area's with raised service access
- Equipment support & mounting to concrete, paved & sealed area's with raised service access
- Portable maintenance access platforms over membrane area's

CHARACTERISTICS / ADVANTAGES

- No Penetration of water tight roofing or seals
- Light weight portable structure
- Modular & Adjustable design
- Quick & Easy installation
- No welding or hotwork required
- Easily extended/expanded for future requirements
- Protection of delicate or easily damaged substructures
- Pre or custom engineered solutions to suit your needs
- Easy & safe access for servicing or maintenance of equipment with Non Slip surface

TECHNICAL DATA / MATERIALS

- High tensile structural marine-grade aluminium
- 304 Grade Stainless steel unit Fixings
- Hi grade Dacromet coated Structure fixings
- Hi Strength structural plastic feet

TESTS

APPROVALS / STANDARDS

- Structural design action B1 & B2
- AS/NZS 1170 Standards Australia / New Zealand (Relevant parts)
- Aluminium Structures, Part 1: Limit State Design AS/NZS 1664.1 Standards Australia / New Zealand NZS/ AS 1657

WARRANTY

- 10 years materials and 2 years install
- Product Warranty is valid in accordance to the PS1 Engineering Standard that it has been designed to

INSTALLATION

- Installation works must be carried out only by Monkeytoe or instructed/approved contractors

MAINTENANCE

- It is recommended that plant platforms are included in the standard 'building warrant of fitness' inspections.
- All damage or loose fixings to be reported immediately to asset manager or building owner for correction.

A

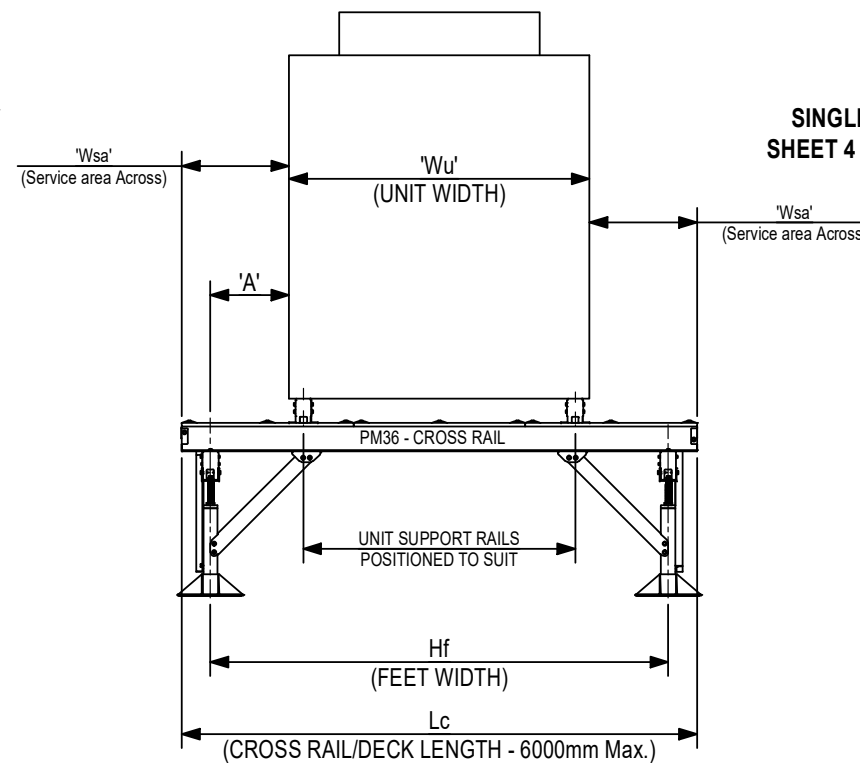
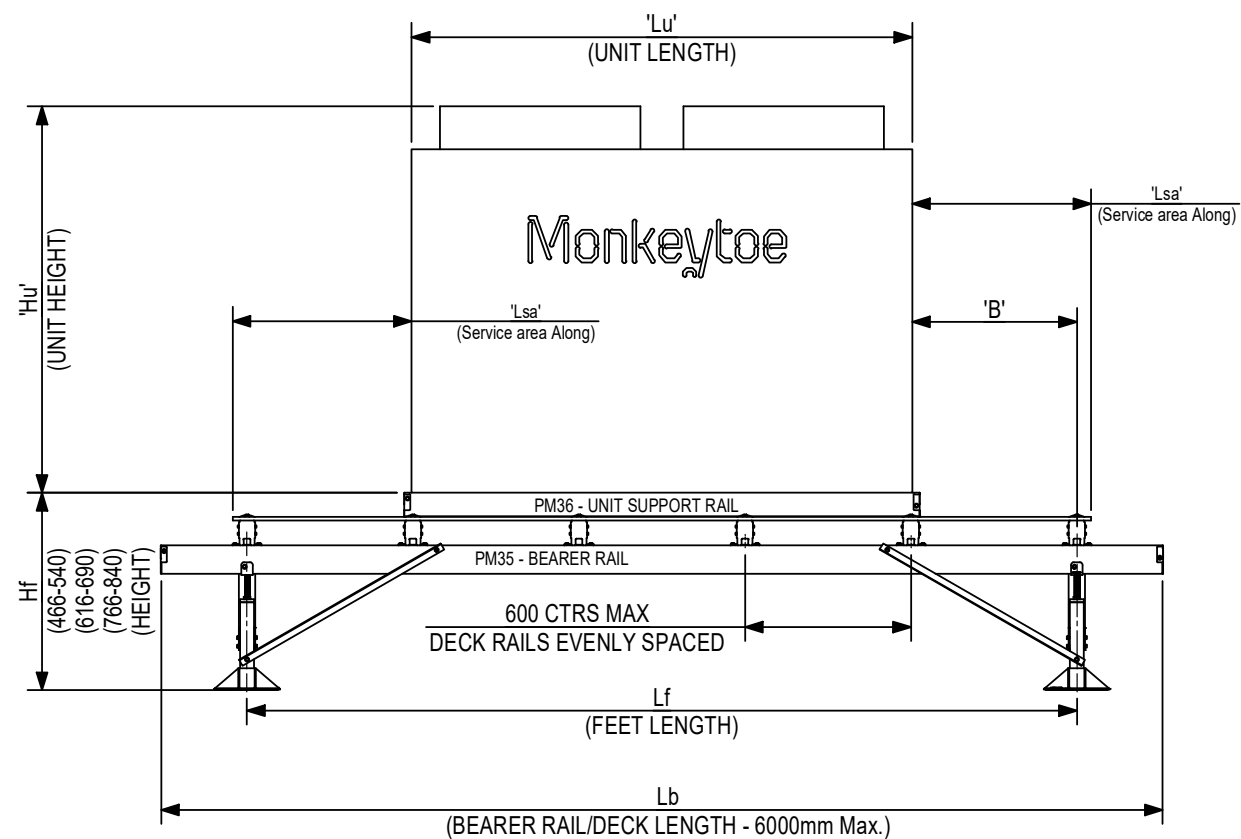
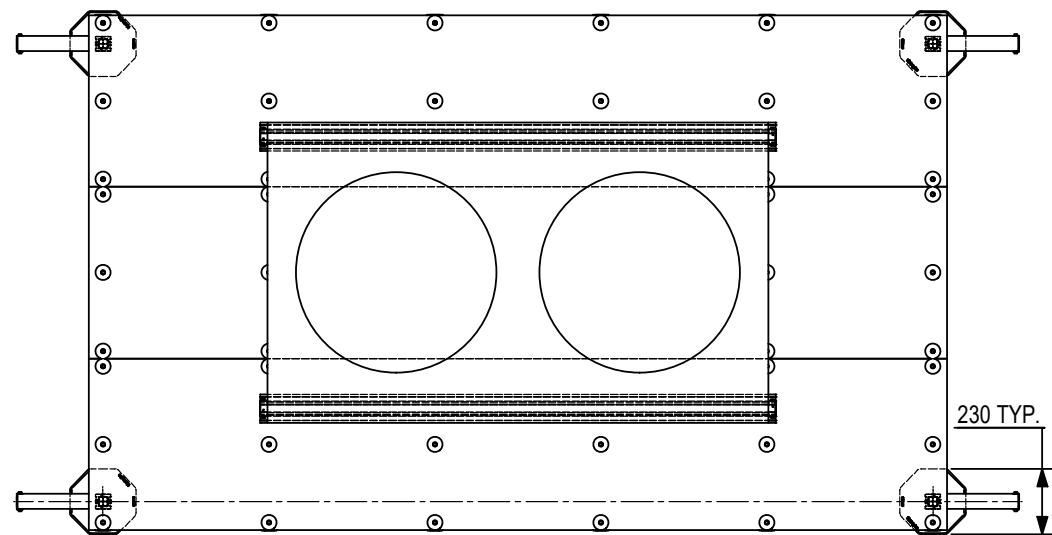
B

C

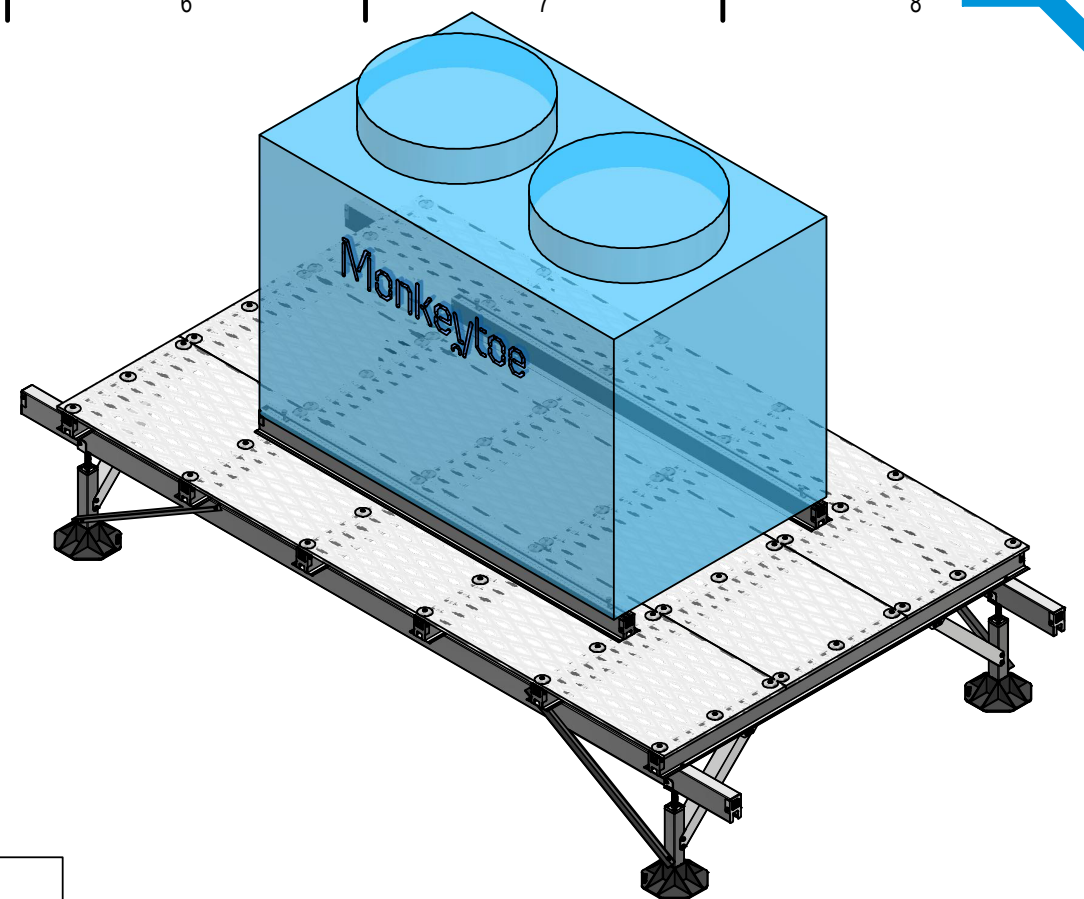
D

E

F



SINGLE BAY CONFIGURATION SHOWN, SEE
SHEET 4 FOR OTHER CONFIGURATION OPTIONS



KITSET NUMBERING GUIDE						
PRIMARY CODE	# BAYS 'L' x # BAYS 'W'	# CROSS RAILS	BEARER RAIL LENGTH (mm) ÷ 100	CROSS RAIL LENGTH (mm) ÷ 100	# UNIT FIXINGS	FIXING DIA, (metric)
CSM200.	00.00.	00.	000.	000.	00.	00
CSM200.02.01.03.048.018.08.10 (Example Kitset Code)						

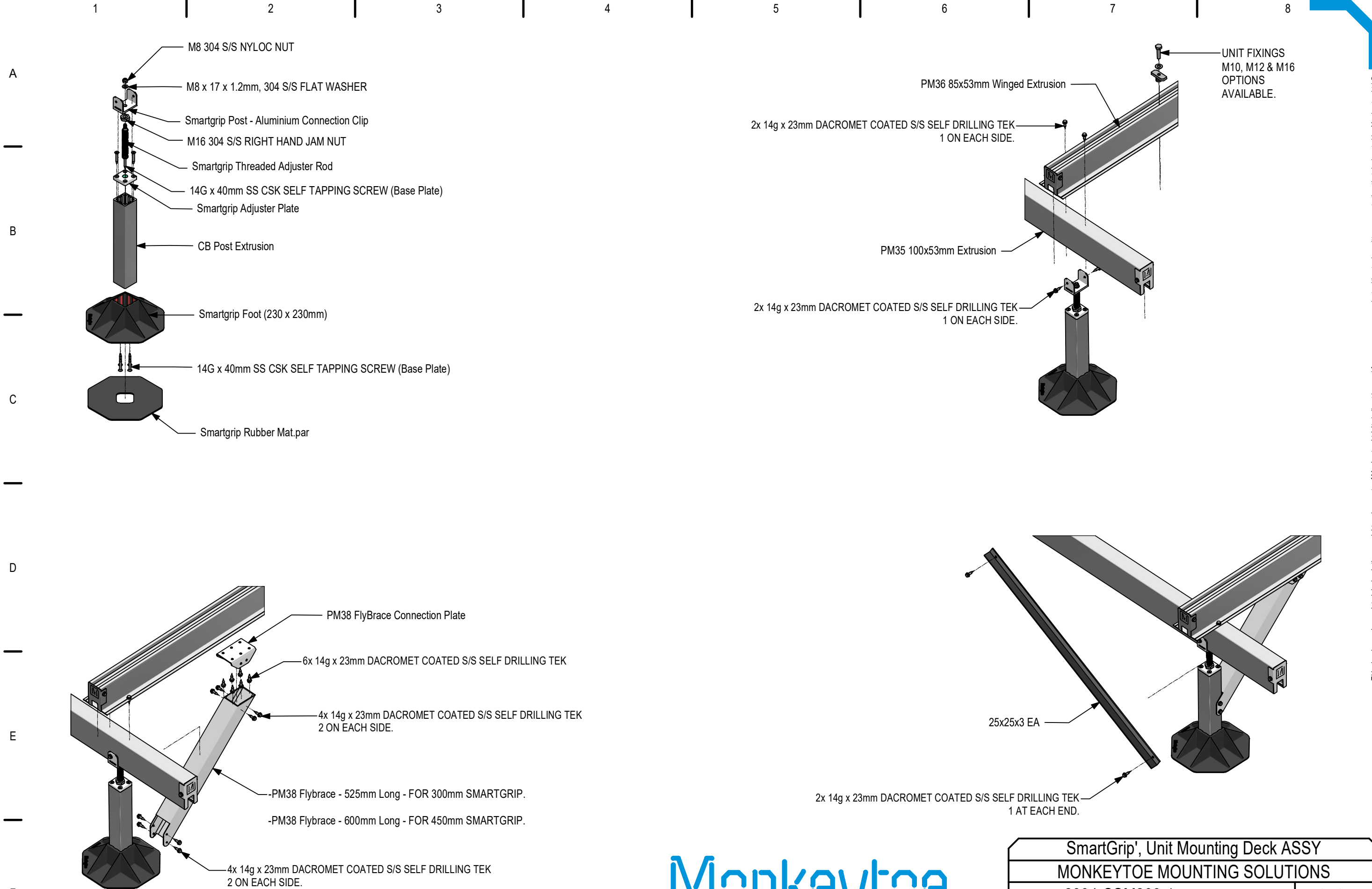
ALL KITSETS ARE TO BE
SPECIFIED USING THE
'CSM001.ENG.CALC' FOR NZ
'CSM000.ENG.CALC' FOR AU
CALCULATOR TO
ENSURE ENGINEERING
SUITABILITY

Monkeytoe

EVERYTHING BETTER
0800 658 637 - www.monkeytoe.co.nz

SmartGrip', Unit Mounting Deck ASSY MONKEYTOE MOUNTING SOLUTIONS		
DWG No: 2004-CSM200-1		18/09/2023
	SHEET 1 OF 4	A3
	SCALE: 1 : 25	REV:4
	DIMENSIONS IN MILLIMETERS	

This drawing and associated design is the copyright and property of Monkeytoe Ltd. It shall not be used for any purpose or project, without prior written consent other than that designated by Monkeytoe Ltd.©



Monkeytoe

EVERYTHING BETTER

0800 658 637 - www.monkeytoe.co.nz

SmartGrip', Unit Mounting Deck ASSY		
MONKEYTOE MOUNTING SOLUTIONS		
DWG No: 2004-CSM200-1	18/09/2023	
	SHEET 2 OF 4	A3
	SCALE: 1 : 20	REV:4
DO NOT SCALE	DIMENSIONS IN MILLIMETERS	

A

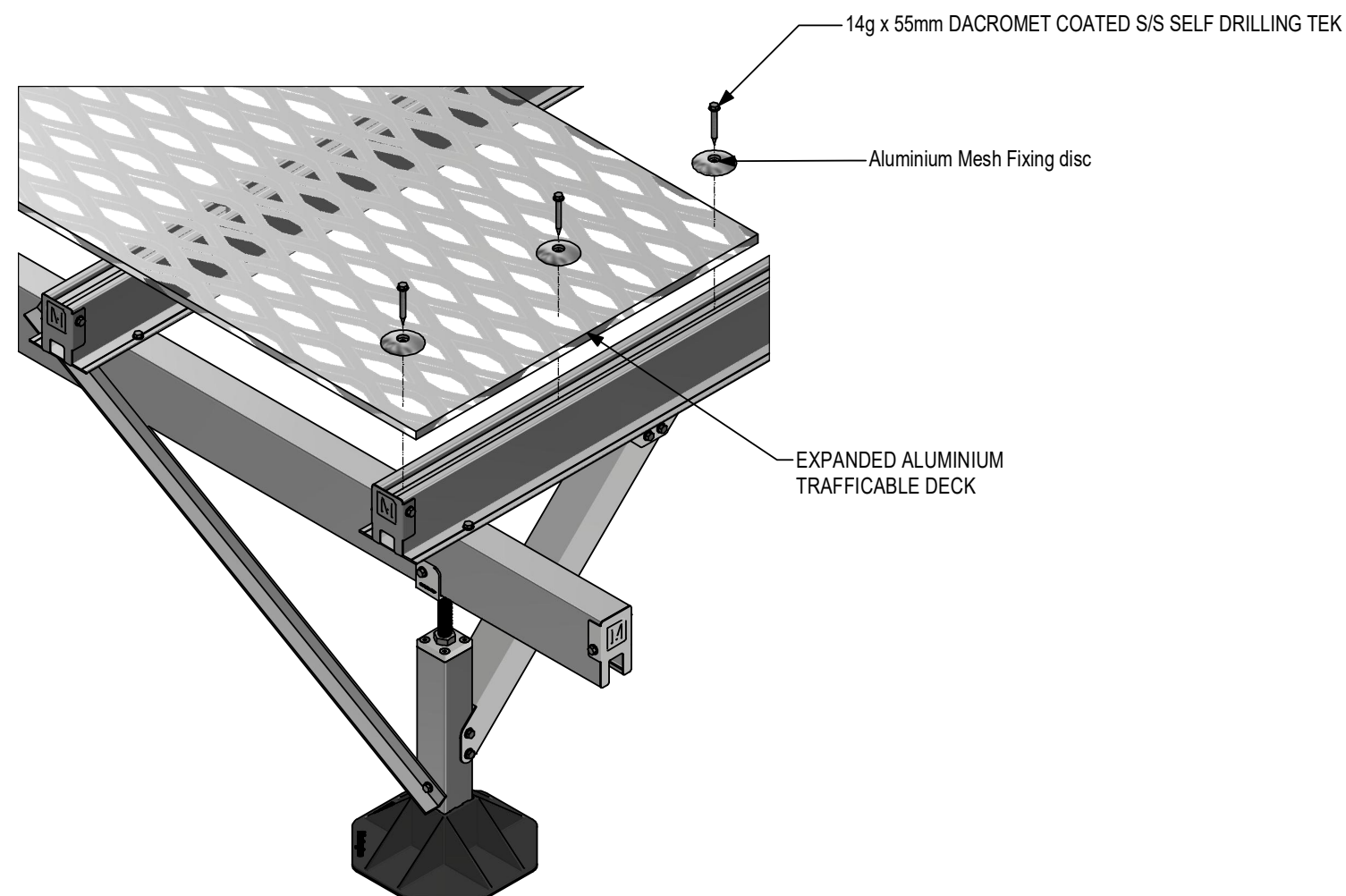
B

C

D

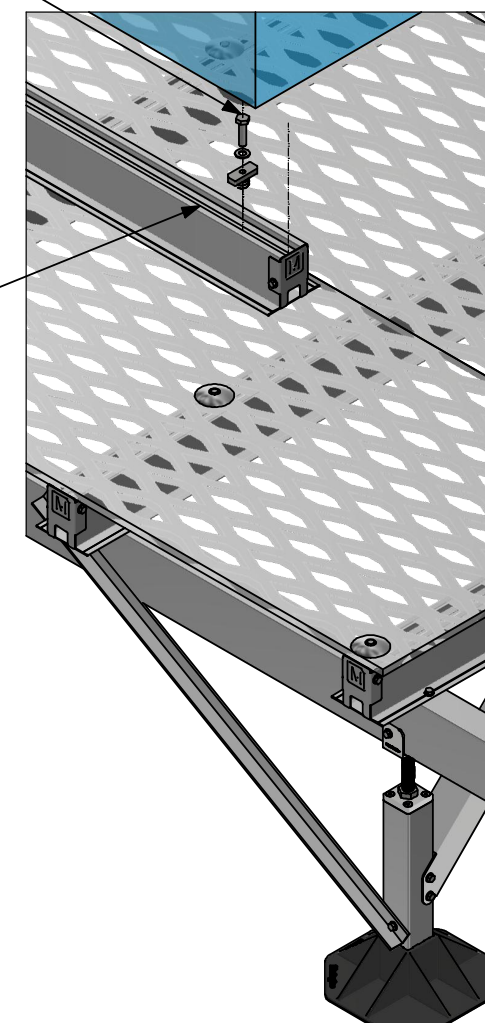
E

F



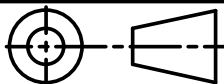
UNIT FIXINGS M10, M12 & M16
OPTIONS AVAILABLE

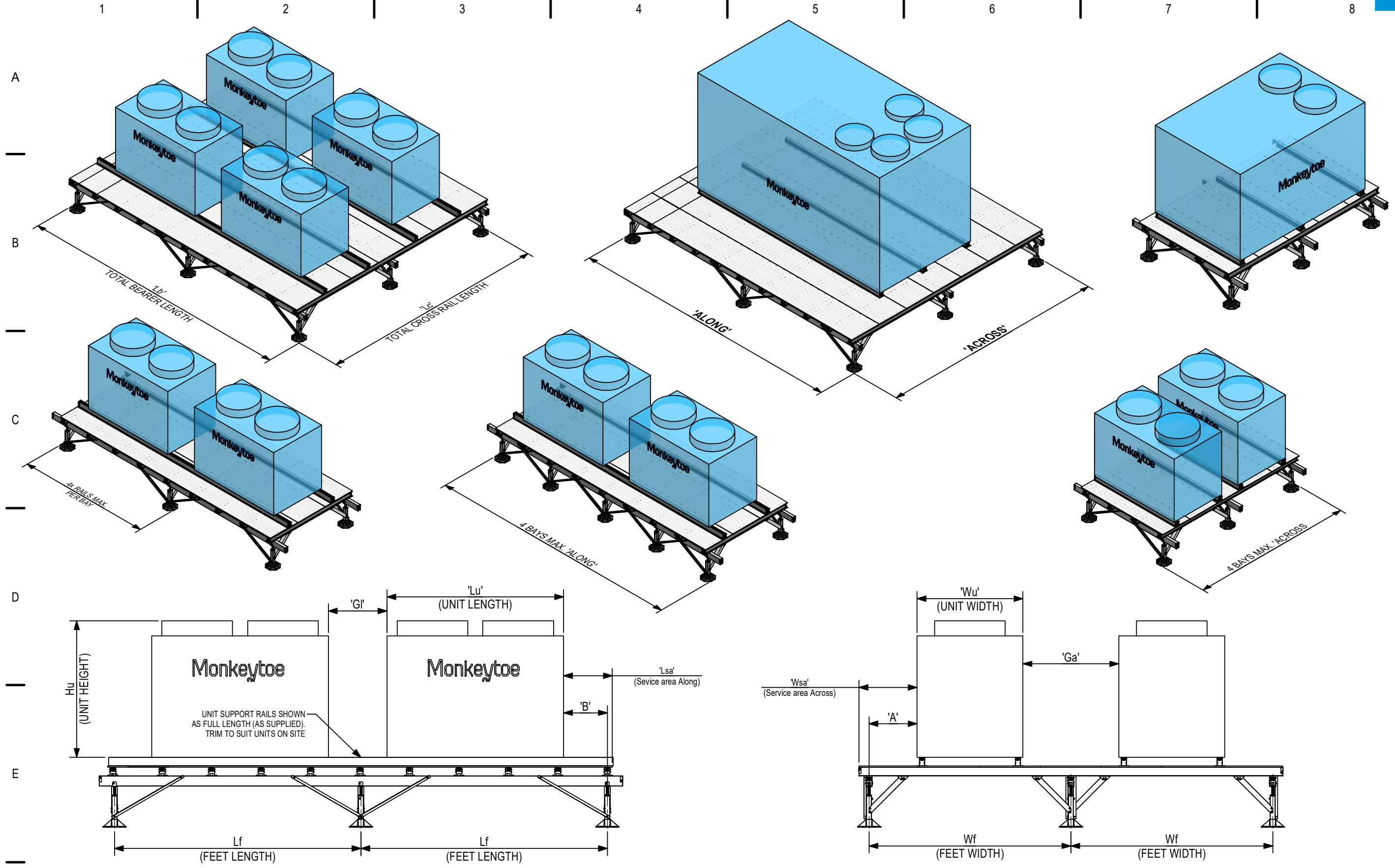
PM36 85x53mm Winged Extrusion



Monkeytoe

EVERYTHING BETTER
0800 658 637 - www.monkeytoe.co.nz

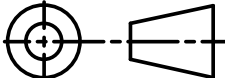
SmartGrip', Unit Mounting Deck ASSY		
MONKEYTOE MOUNTING SOLUTIONS		
DWG No: 2004-CSM200-1	18/09/2023	
	SHEET 3 OF 4	A3
	SCALE: 1 : 8	REV:4
DO NOT SCALE	DIMENSIONS IN MILLIMETERS	



Monkeytoe

EVERYTHING BETTER

0800 658 637 - www.monkeytoe.co.nz

SmartGrip', Unit Mounting Deck ASSY		
MONKEYTOE MOUNTING SOLUTIONS		
DWG No: 2004-CSM200-1	18/09/2023	
	SHEET 4 OF 4	A3
	SCALE: 1 : 27	REV:4
DO NOT SCALE	DIMENSIONS IN MILLIMETERS	