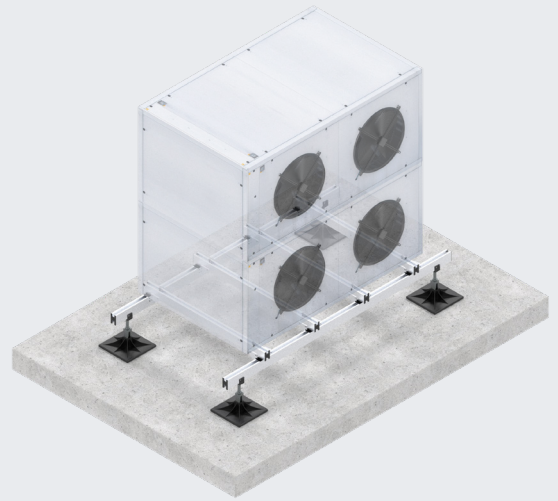


PLATFORMS

Monkeytoe Smartgrip Skeletal Platform



PRODUCT DESCRIPTION

Adjustable, non penetrating, Aluminium, skeletal frame system for surface mounting of small medium & large HVAC units and equipment.

TYPICAL USES / APPLICATIONS

- Membrane rooftop mounting for HVAC & equipment
- Equipment or Piping support & mounting to insulated panel internal ceiling area's
- Equipment or Piping support & mounting to concrete, paved & sealed area's

CHARACTERISTICS / ADVANTAGES

- No Penetration of water tight roofing or seals
- Light weight portable structure
- Modular & Adjustable design
- Quick & Easy installation
- No welding or hotwork required
- Easily extended/expanded for future requirements
- Protection of fragile or easily damaged substructures
- M10 sliding nut feature for fast and simple installation of equipment
- Pre or custom engineered solutions to suit your needs

TECHNICAL DATA / MATERIALS

- High tensile structural marine-grade aluminium
- 304 Grade Stainless steel unit Fixings
- Hi grade Dacromet coated Structure fixings
- Hi Strength structural plastic feet

TESTS

APPROVALS / STANDARDS

- Structural design action B1 & B2
- AS/NZS 1170 Standards Australia / New Zealand (Relevant parts)
- Aluminium Structures, Part 1: Limit State Design AS/NZS 1664.1 Standards Australia / New Zealand NZS/ AS 1657

WARRANTY

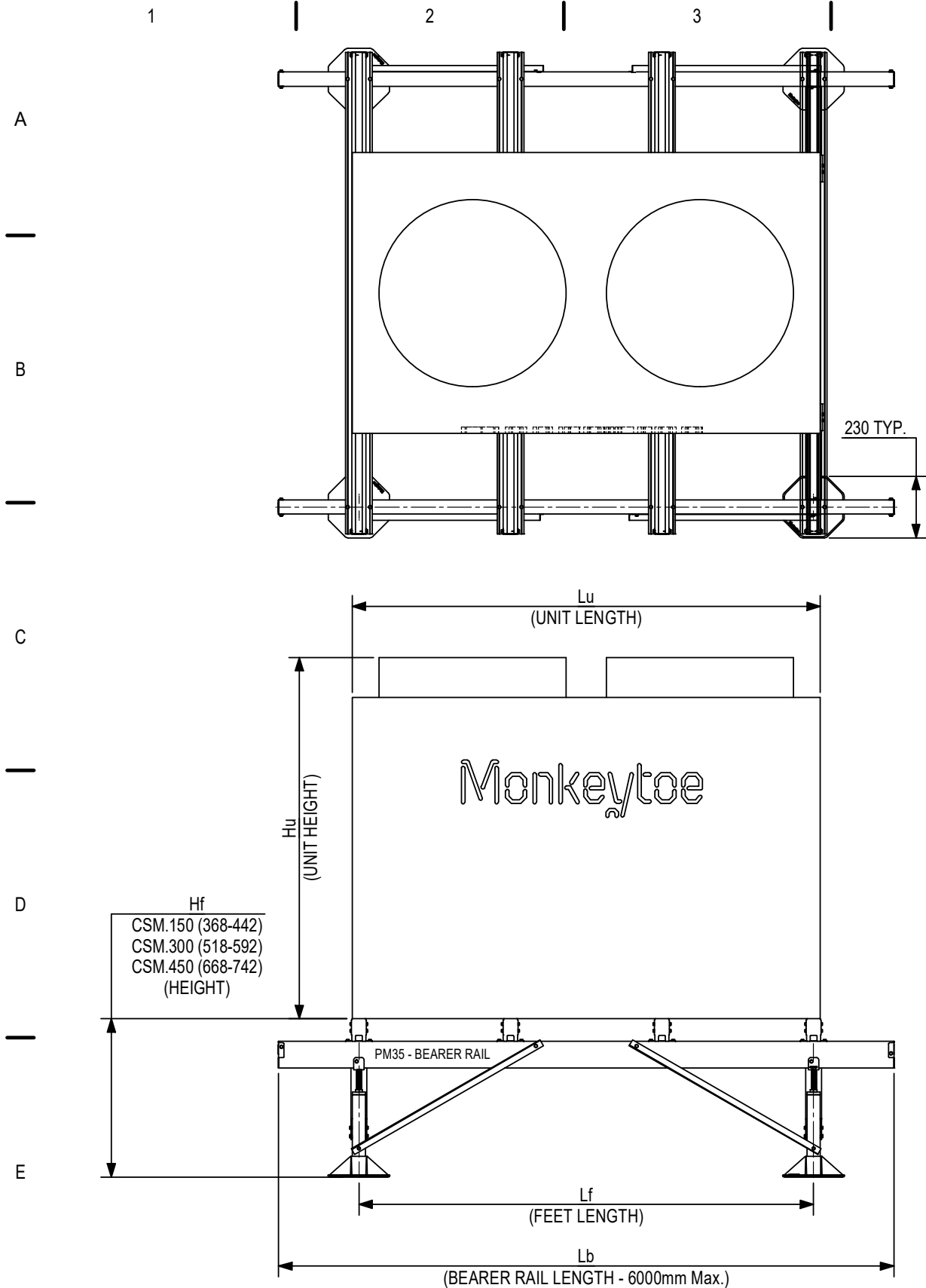
- 10 years materials and 2 years install
- Product Warranty is valid in accordance to the PS1 Engineering Standard that it has been designed to

INSTALLATION

- Installation works must be carried out only by Monkeytoe or instructed/approved contractors

MAINTENANCE

- It is recommended that plant platforms are included in the standard 'building warrant of fitness' inspections.
- All damage or loose fixings to be reported immediately to asset manager or building owner for correction.

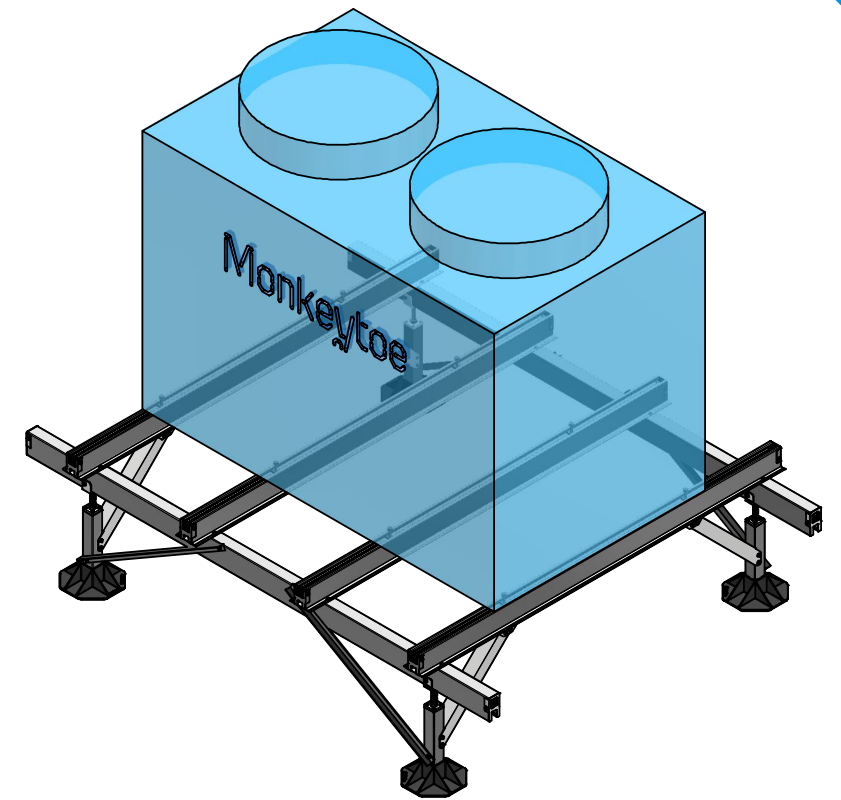


KITSET NUMBERING GUIDE

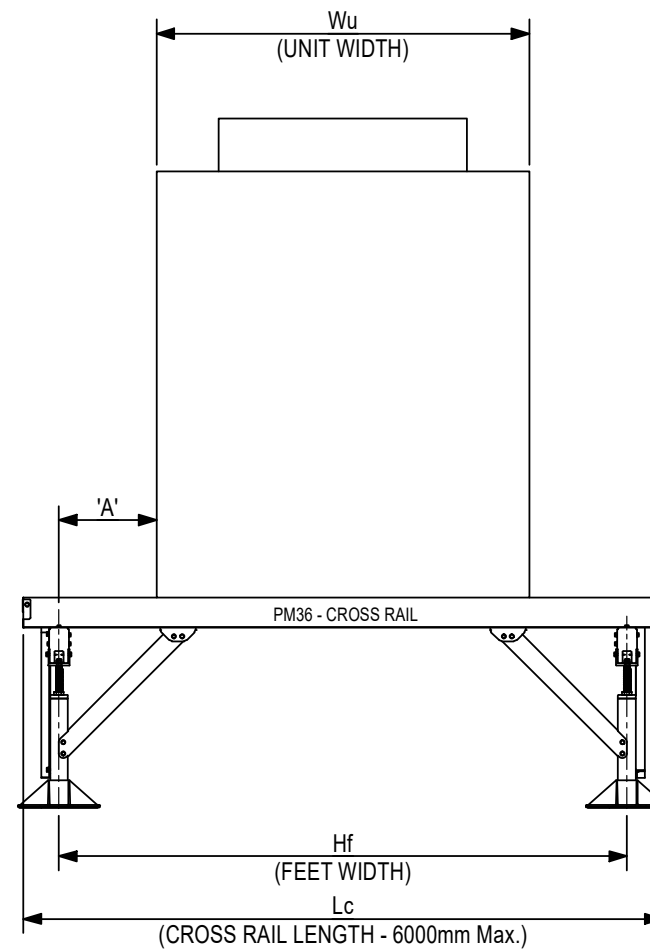
PRIMARY CODE	# BAYS 'L' x # BAYS 'W'	# CROSS RAILS	BEARER RAIL LENGTH (mm) ÷ 100	CROSS RAIL LENGTH (mm) ÷ 100	# UNIT FIXINGS	FIXING DIA, (metric)
CSM100.	00.00.	00.	000.	000.	00.	00
CSM100.02.01.03.048.018.08.10 (Example Kitset Code)						

ALL KITSETS ARE TO BE SPECIFIED USING THE 'CSM001.ENG.CALC' FOR NZ 'CSM000.ENG.CALC' FOR AU CALCULATOR TO ENSURE ENGINEERING SUITABILITY

Monkeytoe
 EVERYTHING BETTER
 0800 658 637 - www.monkeytoe.co.nz

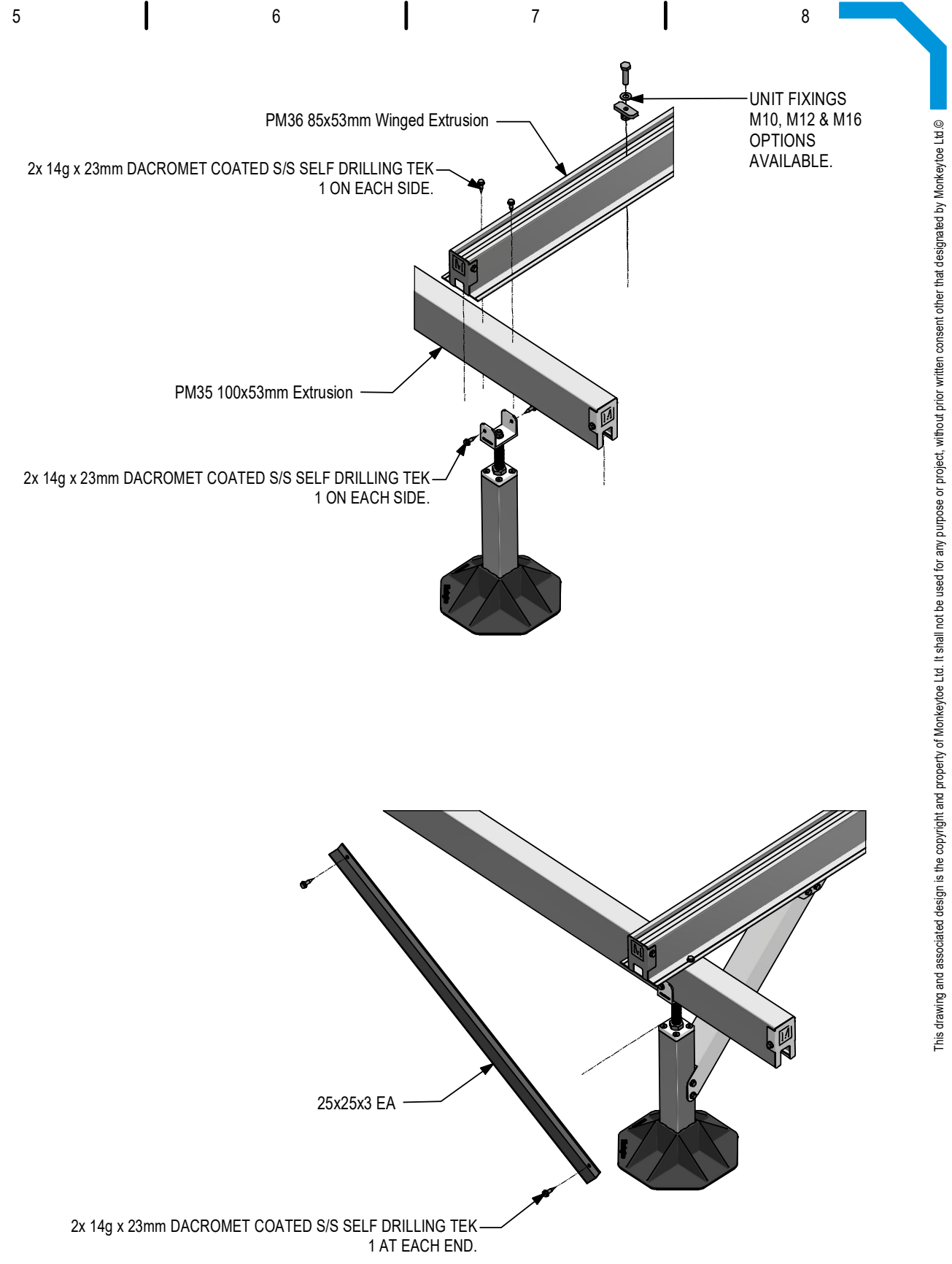
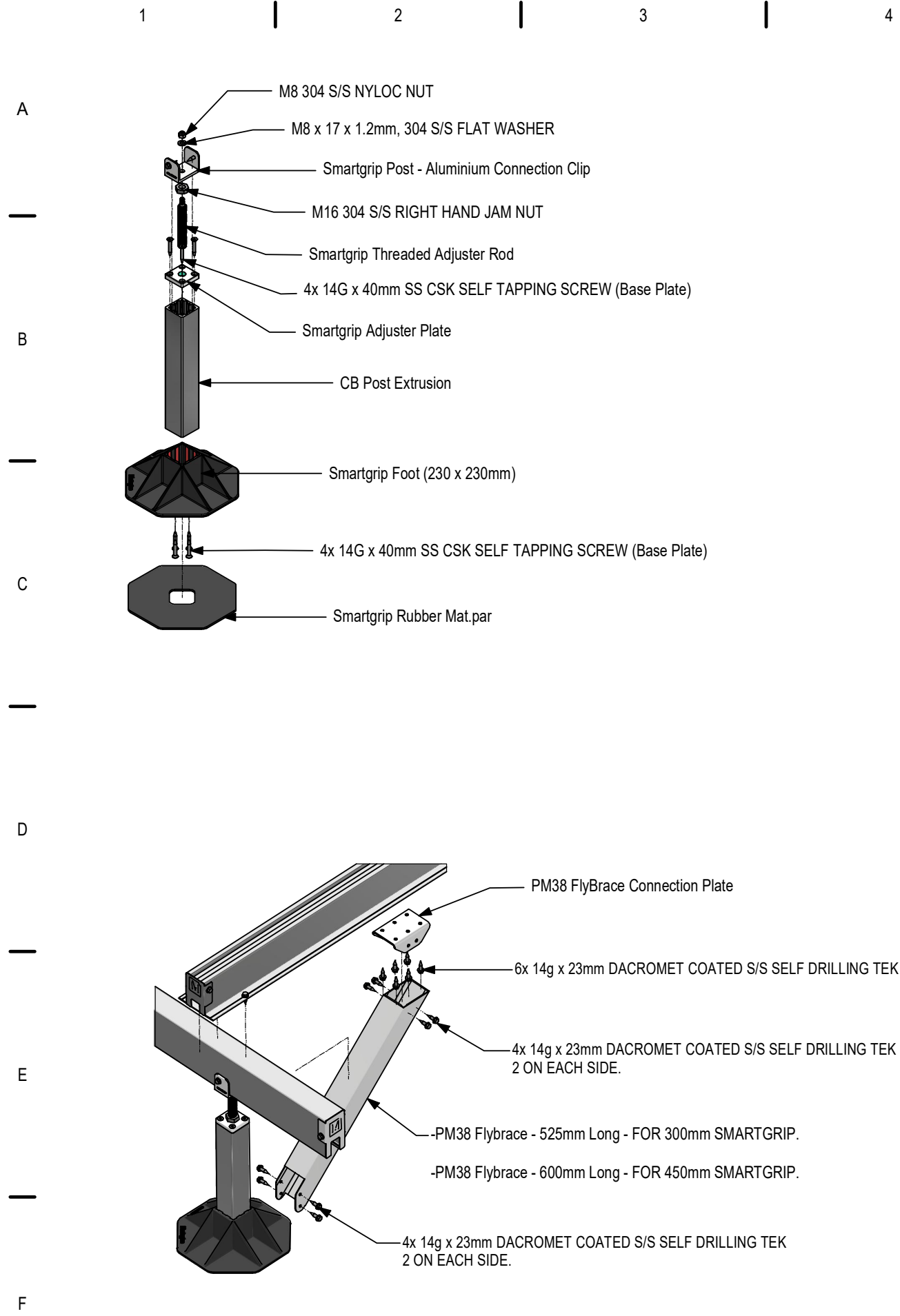


SINGLE BAY CONFIGURATION SHOWN, SEE SHEET 3 FOR OTHER CONFIGURATION OPTIONS



SmartGrip', Skeletal Unit Mounting Frame ASSY		
MONKEYTOE MOUNTING SOLUTIONS		
DWG No: 2004-CSM100-1	18/09/2023	
	SHEET 1 OF 3	A3
	SCALE: 1 : 20	REV:4
DO NOT SCALE	DIMENSIONS IN MILLIMETERS	

This drawing and associated design is the copyright and property of Monkeytoe Ltd. It shall not be used for any purpose or project, without prior written consent other than that designated by Monkeytoe Ltd. ©



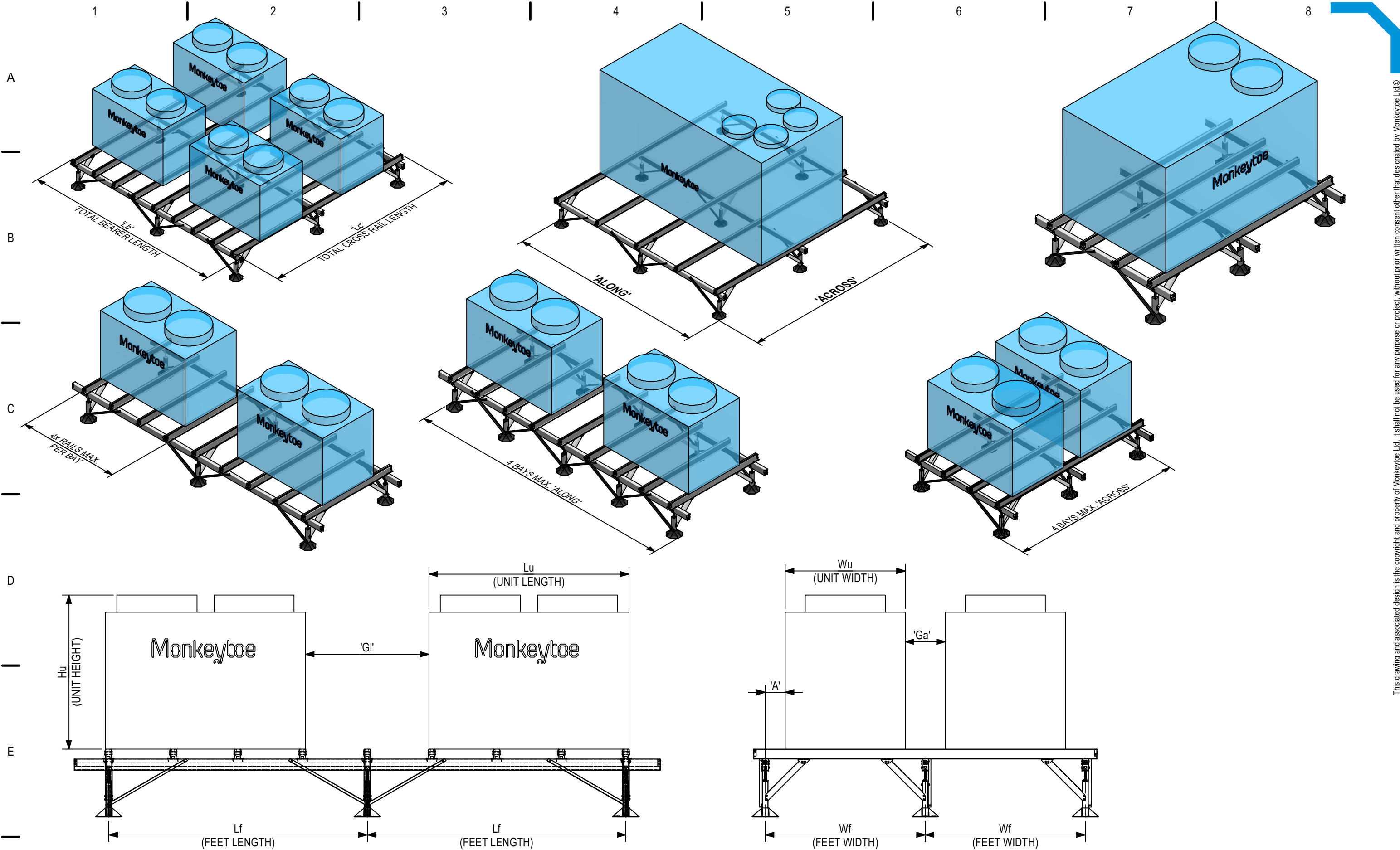
Monkeytoe

EVERYTHING BETTER

0800 658 637 - www.monkeytoe.co.nz

SmartGrip', Skeletal Unit Mounting Frame ASSY		
MONKEYTOE MOUNTING SOLUTIONS		
DWG No: 2004-CSM100-1	18/09/2023	
	SHEET 2 OF 3	A3
	SCALE: 1 : 10	REV:4
	DO NOT SCALE	DIMENSIONS IN MILLIMETERS

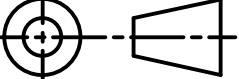
This drawing and associated design is the copyright and property of Monkeytoe Ltd. It shall not be used for any purpose or project, without prior written consent other than that designated by Monkeytoe Ltd.®



F

Monkeytoe

EVERYTHING BETTER
0800 658 637 - www.monkeytoe.co.nz

SmartGrip', Skeletal Unit Mounting Frame ASSY		
MONKEYTOE MOUNTING SOLUTIONS		
DWG No: 2004-CSM100-1		18/09/2023
	SHEET 3 OF 3	
	SCALE: 1 : 20	REV:4
DO NOT SCALE		DIMENSIONS IN MILLIMETERS

This drawing and associated design is the copyright and property of Monkeytoe Ltd. It shall not be used for any purpose or project, without prior written consent other than that designated by Monkeytoe Ltd. ©