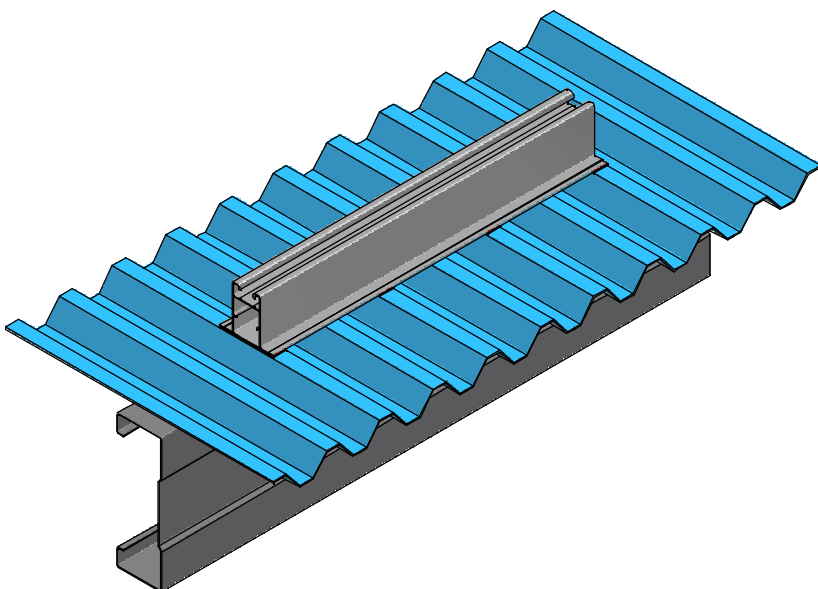
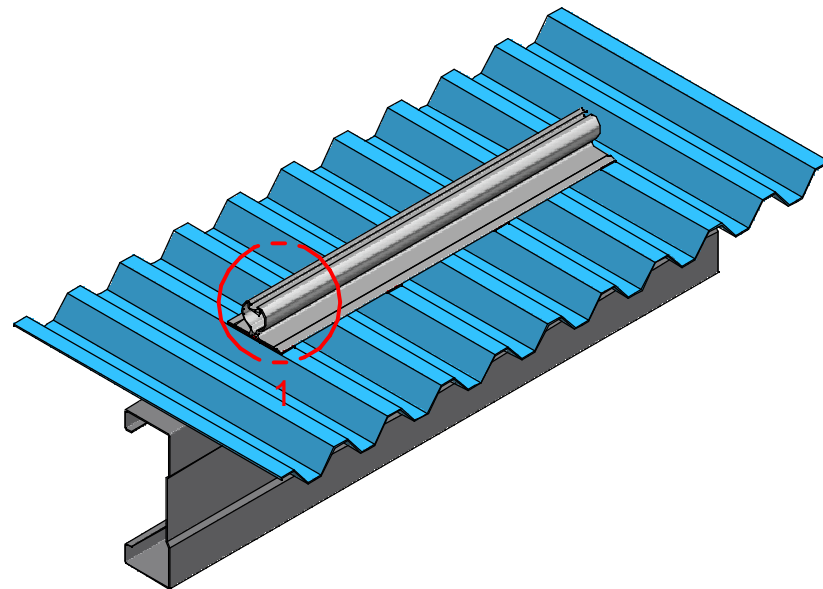


FAT.TSE25R Roofing Iron Adhesive Tape Install Details

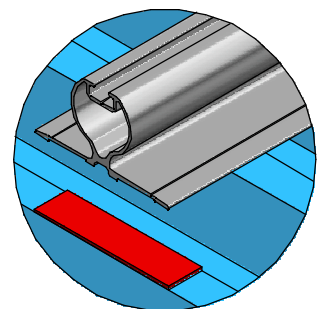
- 1) Clean the area of the roof that will be taped onto using an evaporative cleaner to remove all grease and surface contamination.
- 2) Lightly abrade the top of the iron using a Scotch Brite pad (or equivalent) to improve tape adhesion. (Do not completely remove powdercoating or zincalume finish)
- 3) Clean again with evaporating cleaner to remove any dust and allow to dry completely.
- 4) Remove liner from tape and place into desired position. Do not move rail once placed. Apply firm pressure for at least 30 seconds by standing on extrusion.



PM36 ON ROOFING IRON



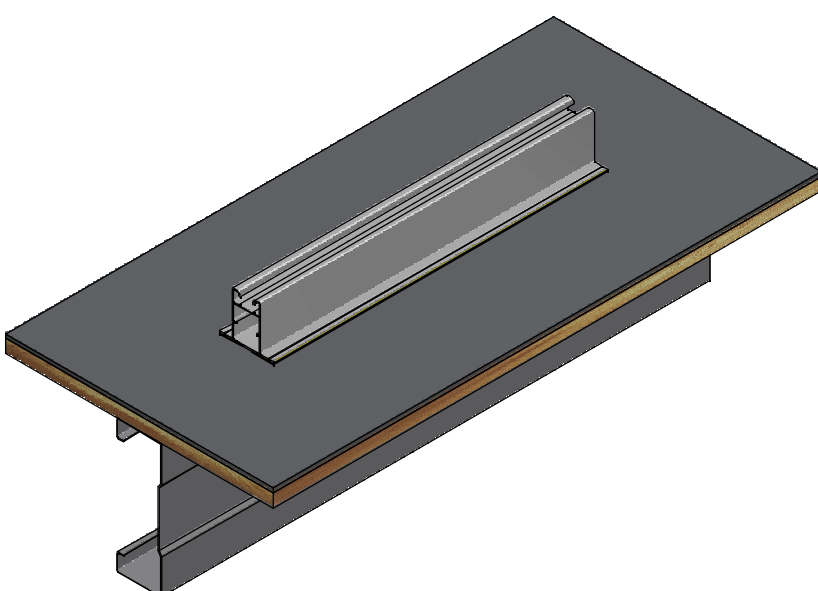
PM21 ON ROOFING IRON



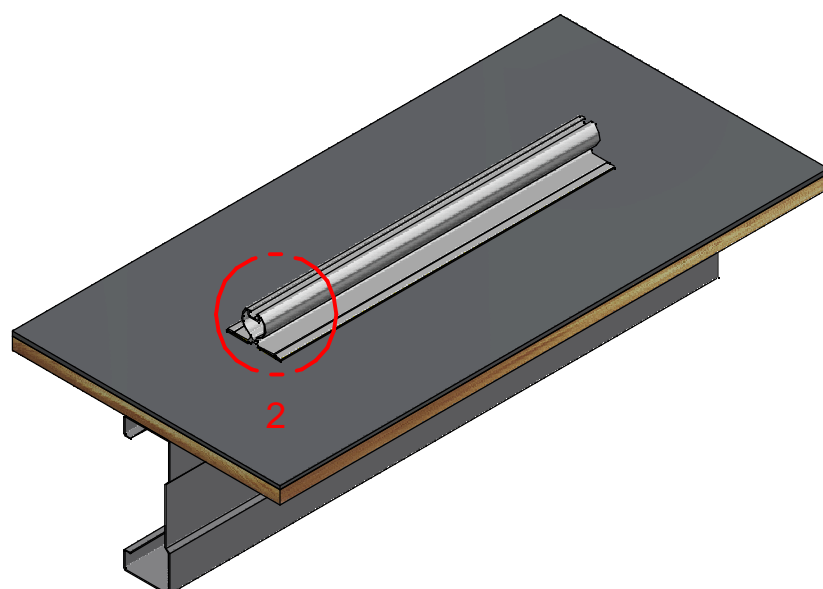
DETAIL 1
1:4

FAT.TSE25M Membrane Adhesive Tape Install Details

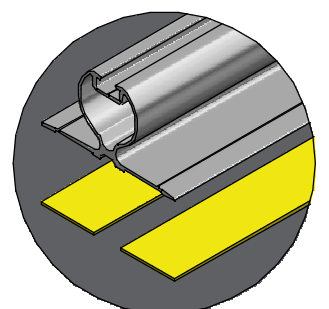
- 1) Clean the area of the roof that will be taped onto using an evaporative cleaner to remove all grease, moss, paint, and other surface contamination. If the surface is aged abrade with 240-300 grit sandpaper to expose a fresh surface. Reclean with evaporative cleaner and allow to dry completely.
- 2) Remove liner from tape and place into desired position. Do not move rail once placed. Apply firm pressure for at least 30 seconds by standing on extrusion.



PM36 ON MEMBRANE



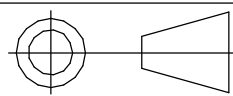
PM21 ON MEMBRANE



DETAIL 2
1:4

Monkeytoe

EVERYTHING BETTER
0800 658 637 - www.monkeytoe.co.nz

Adhesive Tape Install Guide		
MONKEYTOE GROUP		
DWG No: 2004-FAT-I01	12/09/2019	
 DO NOT SCALE	SHEET 1 OF 1	A3
	SCALE: 1:10	REV:01
DIMENSIONS IN MILLIMETERS		