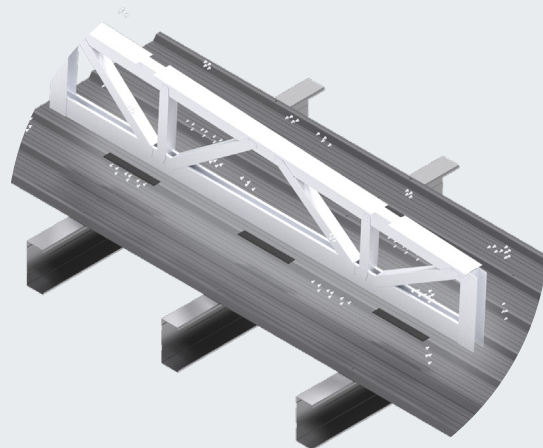


# Roof Fixing Surface Mounting Tape



### PRODUCT DESCRIPTION

High bond adhesive construction tape for surface mounting.

### TYPICAL USES / APPLICATIONS

- **Bonding to Aluminium:** This bonds to all Monkeytoe Aluminium products, and we have a number of extrusion profiles specifically suited for tape mounting applications.
- **Bonding to Coloursteel/Colourbond or Zincalume roofing iron:** Ideal for many applications such as awkward shaped mounting bases for things such as ladder bases, duct supports or trusses.
- **Bonding to Chiller panel/Metal-clad SIP panel:** This is a non-penetrating, watertight solution for all permanent mounting on these surfaces in both vertical and horizontal applications.
- **Bonding to Powdercoated metals:** This provides a strong aesthetically pleasing bond with no damage to the surface finish for all types of mounting. NOTE: May require the application of primer prior to assembly.

### CHARACTERISTICS / ADVANTAGES

- Acrylic adhesive tapes have been used in demanding applications such as aircraft, automotive and construction industries for more than 30 years outperforming mechanical fasteners in the same applications.
- Due to its chemistry the adhesive bond typically strengthens with age.
- Adhesive technology allows this tape to lock to the surface without changing it's properties.
- Non-penetrating fixing option.
- The viscoelastic nature of the tape body ensures any dynamic loads and stresses are absorbed and spread along the entire length removing high stress zones and protecting the component and bond.

### TECHNICAL DATA / MATERIALS

- Next generation acrylic adhesive technology developed in Germany
- Fully sealed bond between the Tape and Bonded Substrate not subject to degradation or corrosion from environmental factors such as high temperatures, water, saltwater, UV or pollutants.
- Tape body - viscoelastic nature

### TESTS

#### APPROVALS / STANDARDS

- This product has been designed and manufactured by Tesa of Germany who have been manufacturing tapes and adhesives for over 100 years.
- This high-bond adhesive construction tape has undergone multiple tests all around the world, including specific tests for Monkeytoe applications *\*For specialist applications and further engineering data please contact your Monkeytoe representative.*

### WARRANTY

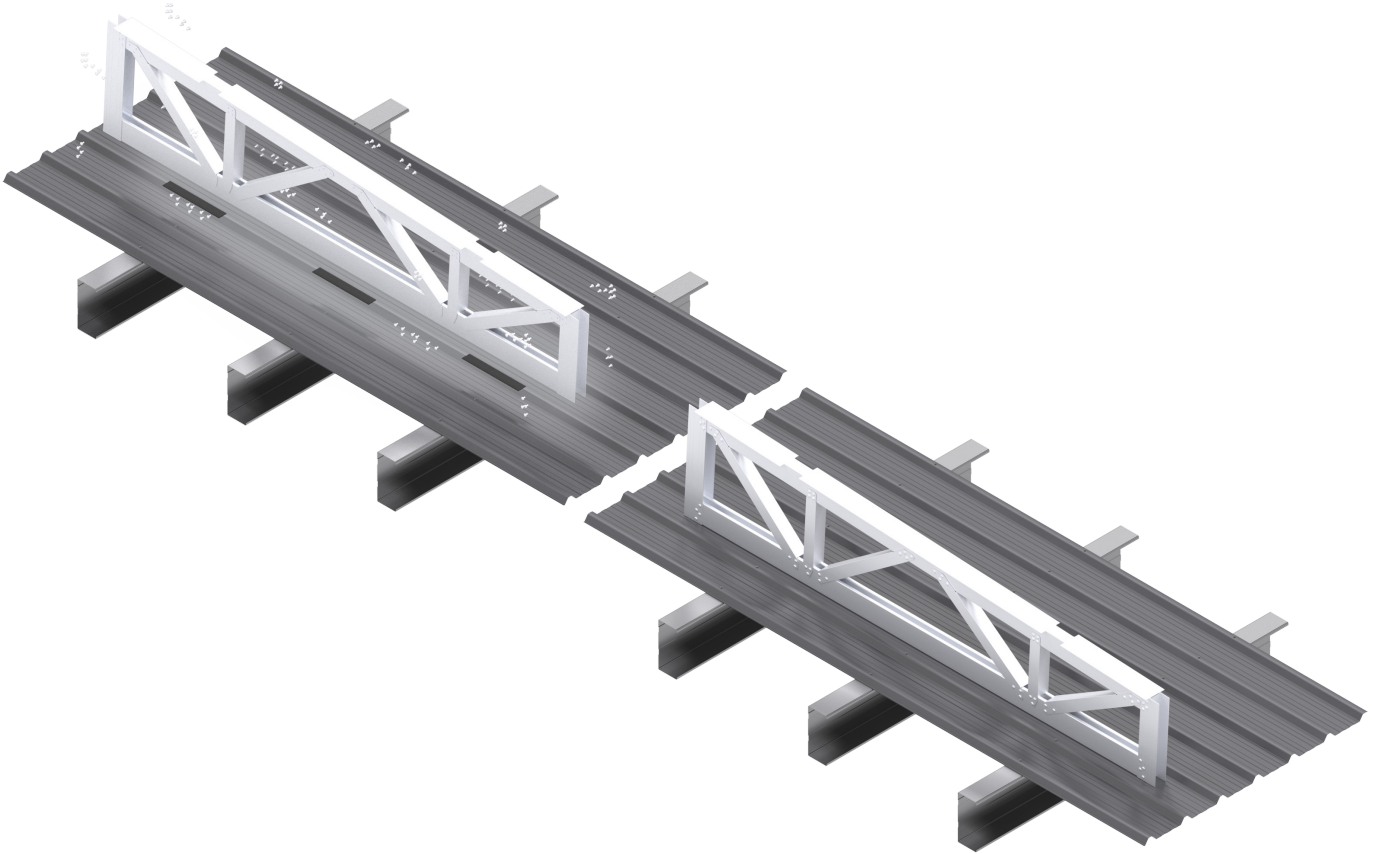
- 10 years product warranty

### MAINTENANCE

- It is recommended that plant platforms are included in the standard 'building warrant of fitness' inspections.
- All damage or loose fixings to be reported immediately to asset manager or building owner for correction.

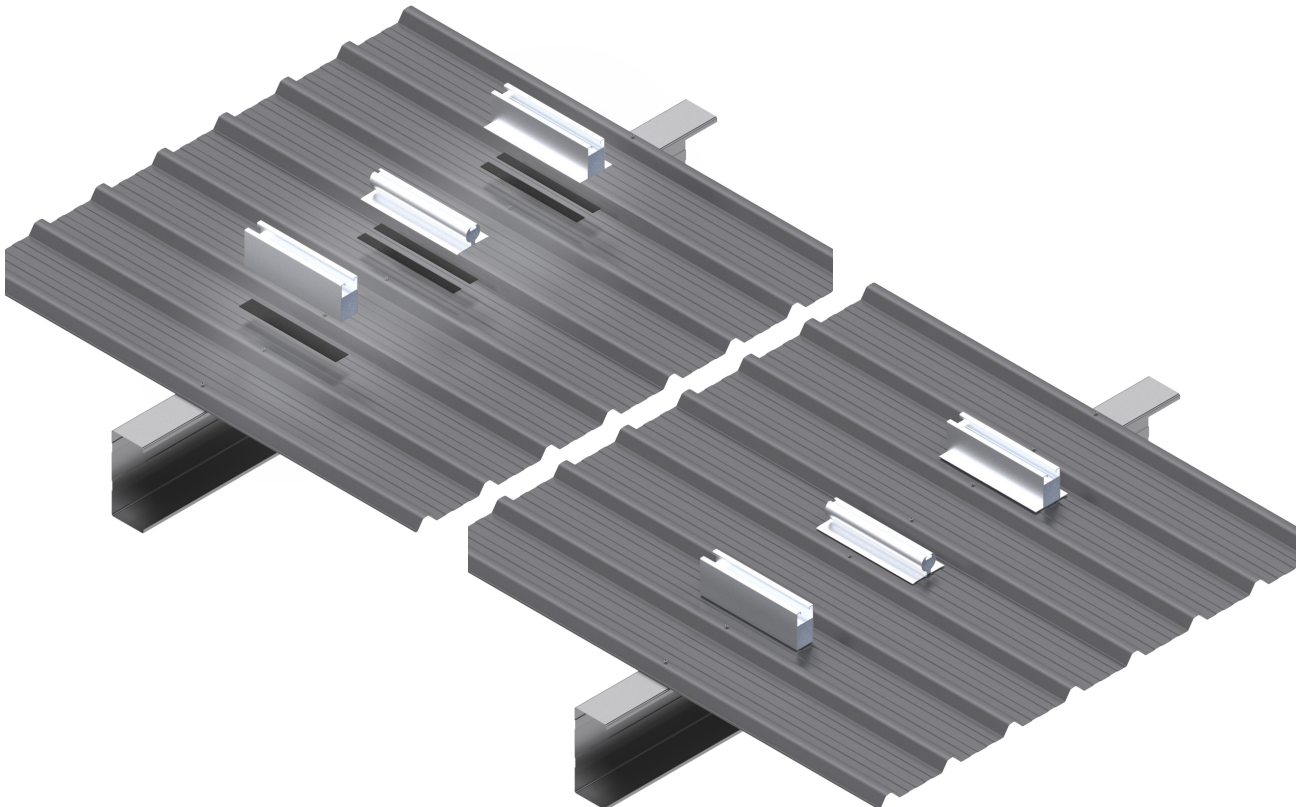
### EXAMPLE 1.

High-bond adhesive construction tape in a platform truss scenario.

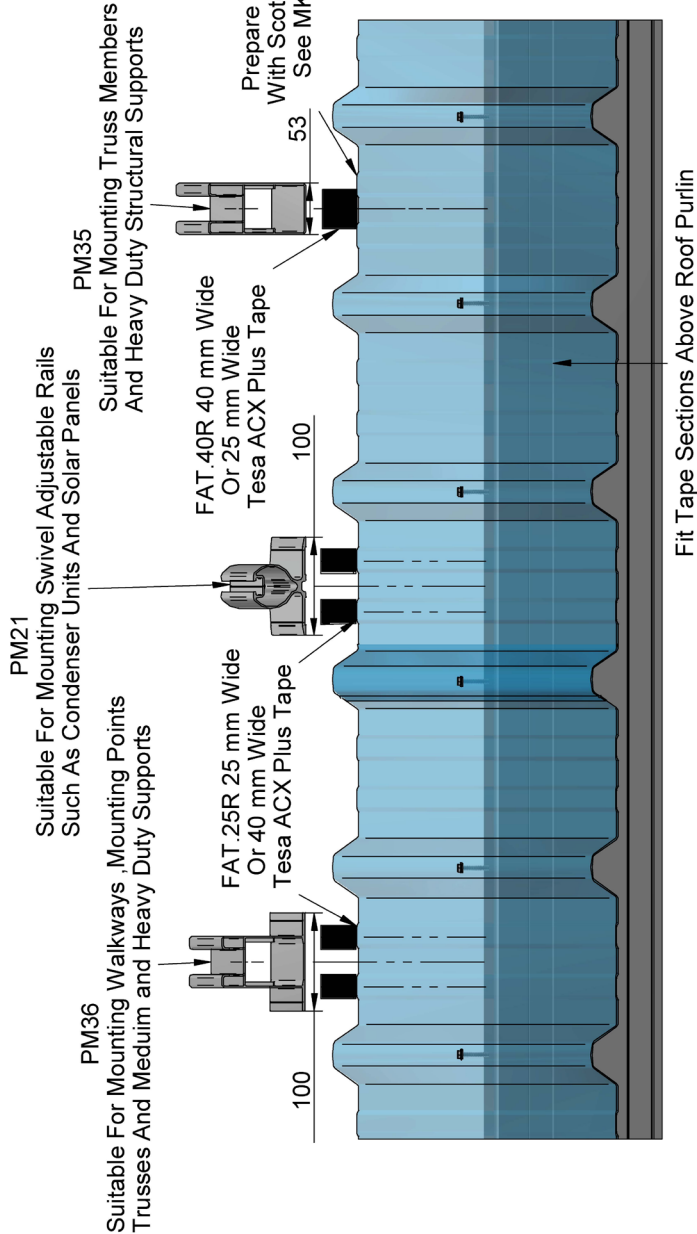


### EXAMPLE 2.

High-bond adhesive construction tape for surface mounted extrusions.

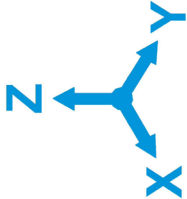


ROOFING IRON ADHESIVE TAPE  
TESA ACX PLUS  
SUITABLE FOR COLORBOND AND ZINCALUME SURFACES  
ROOFING IRON AND SIP PANEL SURFACES  
SUITABLE FOR ALL LONG TERM STRUCTURAL MOUNTING  
OF MONKEYTOE PRODUCTS



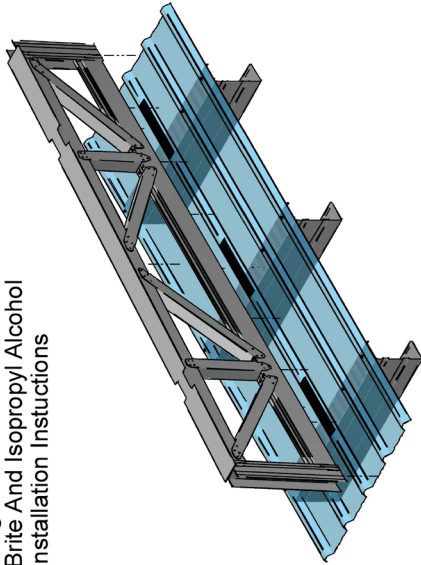
FOR SITE SPECIFIC DESIGN PLEASE SUPPLY THE FOLLOWING INFORMATION :

- 1.DIMENSIONS ,WEIGHT AND FIXING DETAILS OF PRODUCT TO BE MOUNTED
  - 2.ROOF CLADDING , PITCH AND PURLIN SPACING
  - 3.GEOGRAPHIC LOCATION AND SOIL CLASS (AS/NZS1170 )
  - 4.BUILDING IMPORTANCE LEVEL (AS/NZS1170 )
  - 5.ROOF HEIGHT ABOVE GROUND LEVEL
- NOTE: MONKEYTOE IS NOT RESPONSIBLE FOR DETERMINING THE SUITABILITY OF  
THE BUILDING STRUCTURE TO SUPPORT THE STRUCTURE-STRUCTURE CAN BE  
DESIGNED TO SPECIFIC LOADINGS AND SUPPORT CENTRES IF REQUIRED



**MAXIMUM IMPOSED  
LOADS (kpa)**

X= 120 kpa  
Y= 120 kpa  
Z= 120 kpa



Monkeytoe Platform Truss  
Typical Application  
Tape Sections Above Purlins

ROOFING IRON ADHESIVE MOUNTING TAPE			
MONKEYTOE			
DWG No:	3501- ARTTACX-1	12/07/2019	
	SHEET 1 OF 1	A3	
	SCALE: 1:5	REV:01	
DO NOT SCALE	DIMENSIONS IN MILLIMETERS		

Monkeytoe

EVERYTHING BETTER  
0800 658 637 - [www.monkeytoe.co.nz](http://www.monkeytoe.co.nz)