

CUSTOM DESIGN

Monkeytoe Aluminium Structures

PRODUCT DESCRIPTION

Custom aluminium access structure for any hard-to-reach place, fully designed, engineered, manufactured and installed by Monkeytoe.



TYPICAL USES / APPLICATIONS

- Ideal where external access to roof is restricted
- Where room is limited to access space
- Mezzanine access
- Production Plants
- Commercial buildings ie. Hotel, apartment
- Power Stations
- Storage tanks
- Public access including bridges
- Ports/marine environments
- Container structures
- Elevated/suspended/bridged walkways

CHARACTERISTICS / ADVANTAGES

- All structures are manufactured from marine-grade aluminium, therefore non-corrosive.
- Aluminium structures are significantly lighter than comparable steel structures. Weight savings can be up to 40% for a single project.
- Being a more versatile material this allows for greater flexibility in design.
- Monkeytoe offer the full package from consultancy/compliance, to design/engineering, to manufacturing to the completed install.

TECHNICAL DATA / MATERIALS

- Stringers: 6061 – T6 aluminium flat bar
- Stair treads: 6061 – T6 aluminium extrusion
- Stanchions: 6061 – T6 aluminium RHS extrusion
- Handrails: 6061 – T6 aluminium extrusion
- Fixings (bolts, tek screws): – 304 grade stainless steel
- Various aluminium support members: 6061 - T6 aluminium extrusion

TESTS

APPROVALS / STANDARDS

- Accordance with relevant sections of AS/NZ 1657
- Building B1 structure code
- OHS codes of practice standard/guidelines
- D1 – Access routes

WARRANTY

- 25 years materials and 2 years install

INSTALLATION

- Installation works must be carried out only by Monkeytoe or instructed/approved contractors

MAINTENANCE

- Self cleaning when used in outdoor situations
- General cleaning recommended in conjunction with standard building / plant cleaning programme or policy
- No certified maintenance is required that affect lifespan or performance of product

CUSTOM DESIGN PROCESS Monkeytoe is able to bridge the gap between engineers, architects and other parties, to ensure a compliant and fit-for-purpose solution is taken from design to installation.



STEP ONE

Initial Consultation

We provide a consultation – either on-site or at your office. From there, we visit the site when required or work directly from plans and sketches.



STEP THREE

Design Finalised

When the design is finalised, we provide a fixed cost for manufacture and installation – or, if you're prepared to proceed from the proposal, we will cover any small changes as a variation.



STEP TWO

Concepts & Costings

We develop the design concept and supply a cost estimate for approval. This starts the design and documentations process.



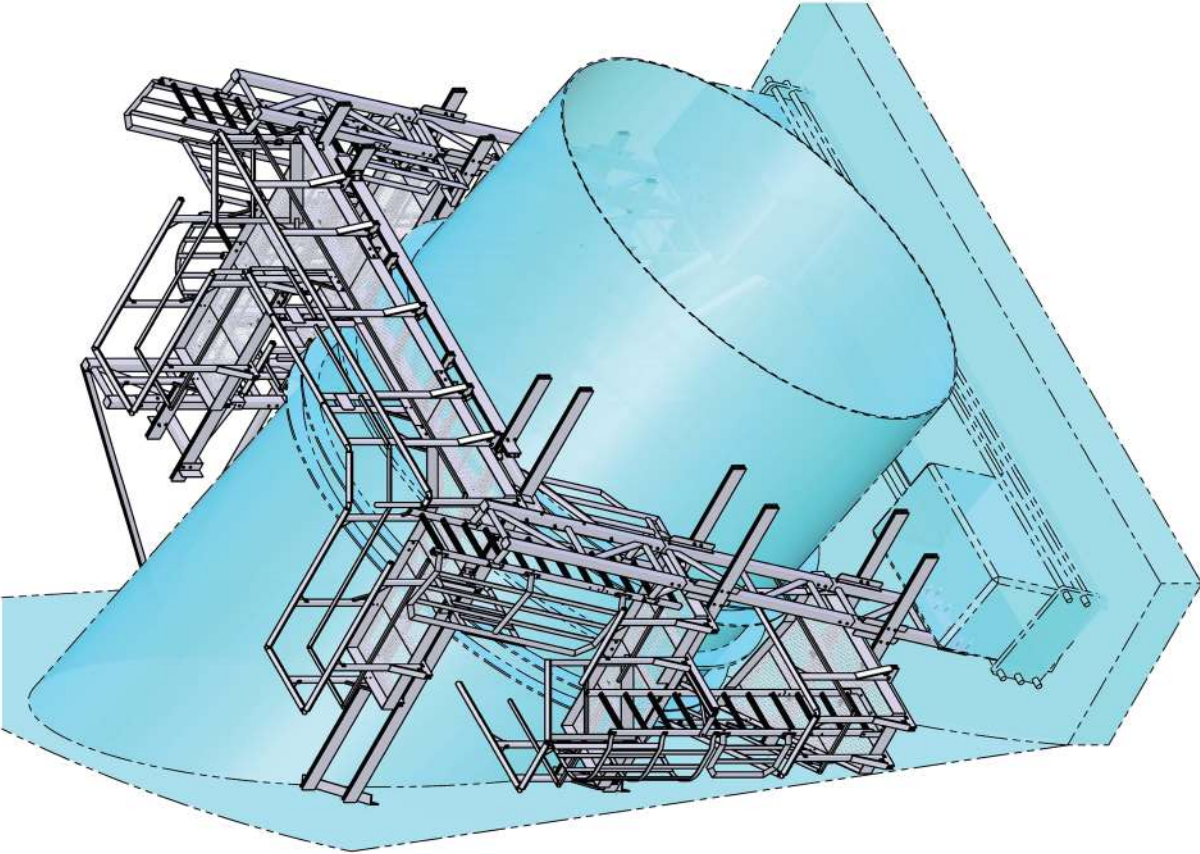
STEP FOUR


Lead Times

You place the order, and we then provide accurate lead times for manufacture and installation.

PRODUCT IMAGES



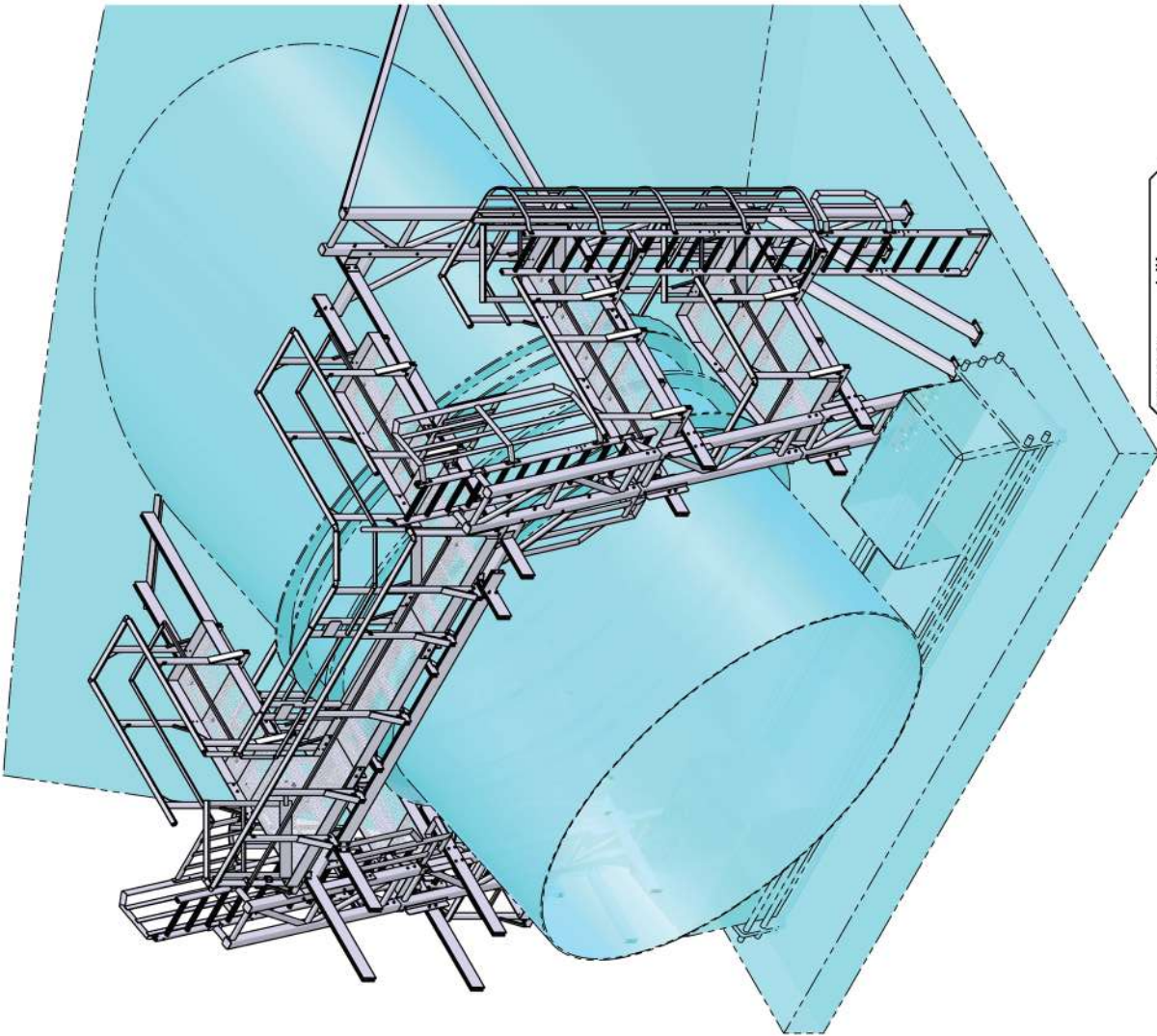


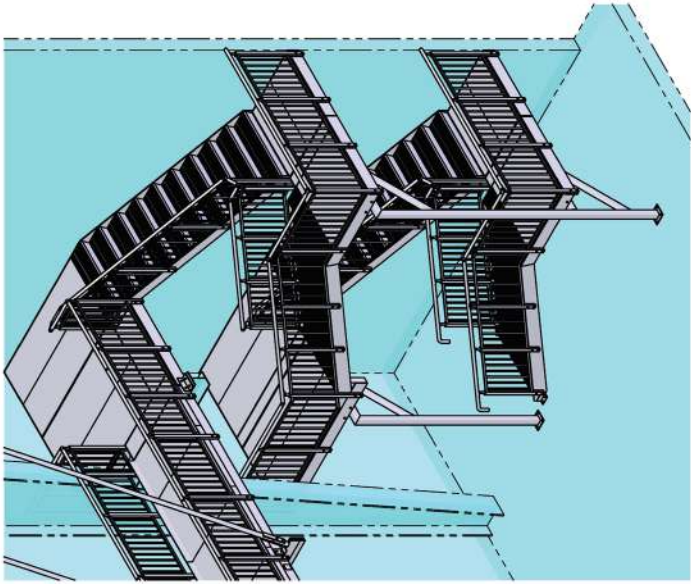
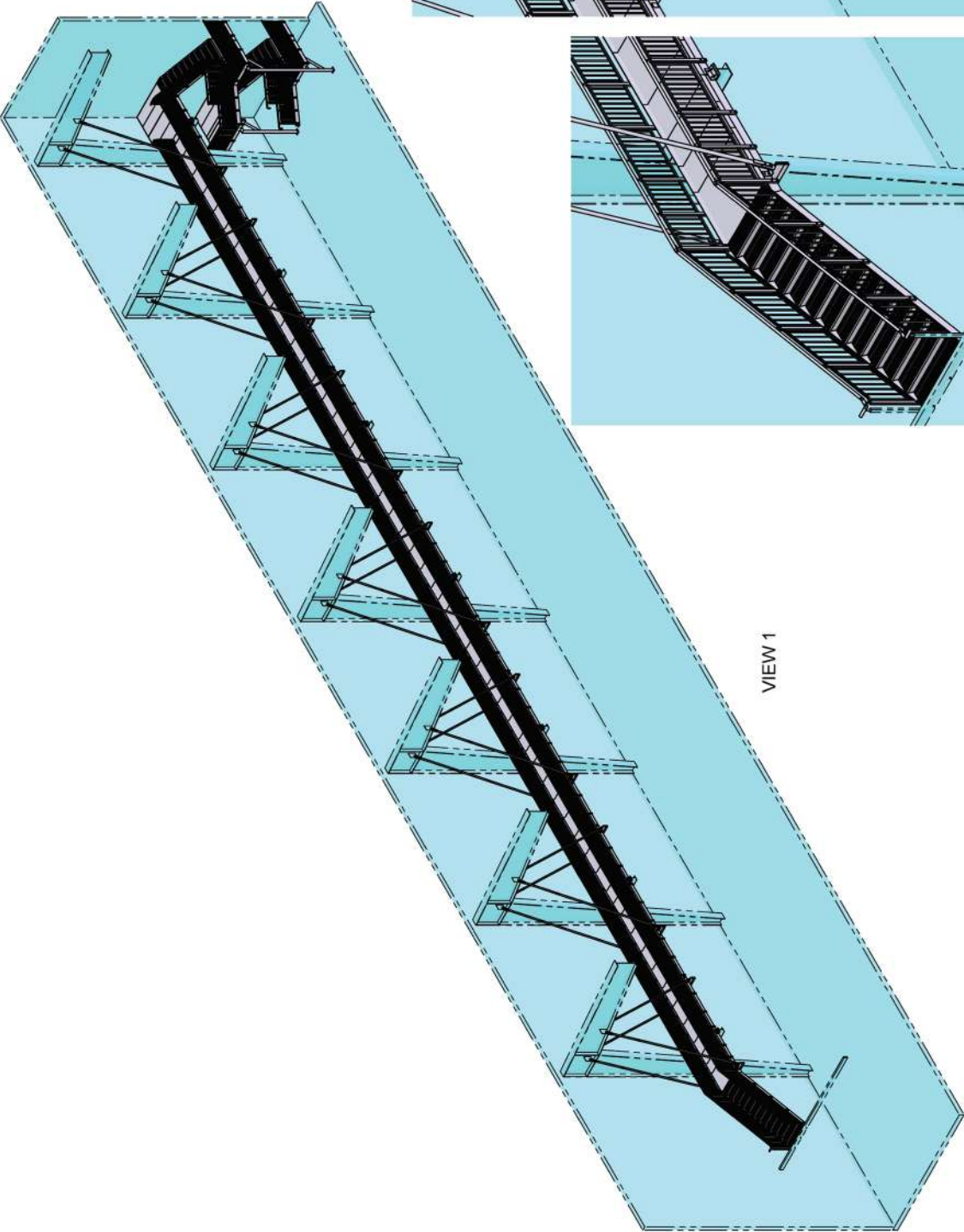
Custom Penstock Access	
MONKEYTOE	
DWG No: 19386-PS5-1	19386
SHEET 1 OF 5	
SCALE 1:50	
DIMENSIONS IN MILLIMETERS	
DO NOT SCALE	
	

Monkeytoe

EVERYTHING BETTER
0800 658 637 - www.monkeytoe.co.nz

DRAWN BY:	LJK
MODELED BY:	LJK
CHECKED BY:	BP/BD/LK
DATE DRAWN:	26/11/2018
LAST SAVED:	26/11/2018
MATERIAL:	See BOM
FINISH:	MILL
TOLERANCES:	+0,-2.0;0.1"



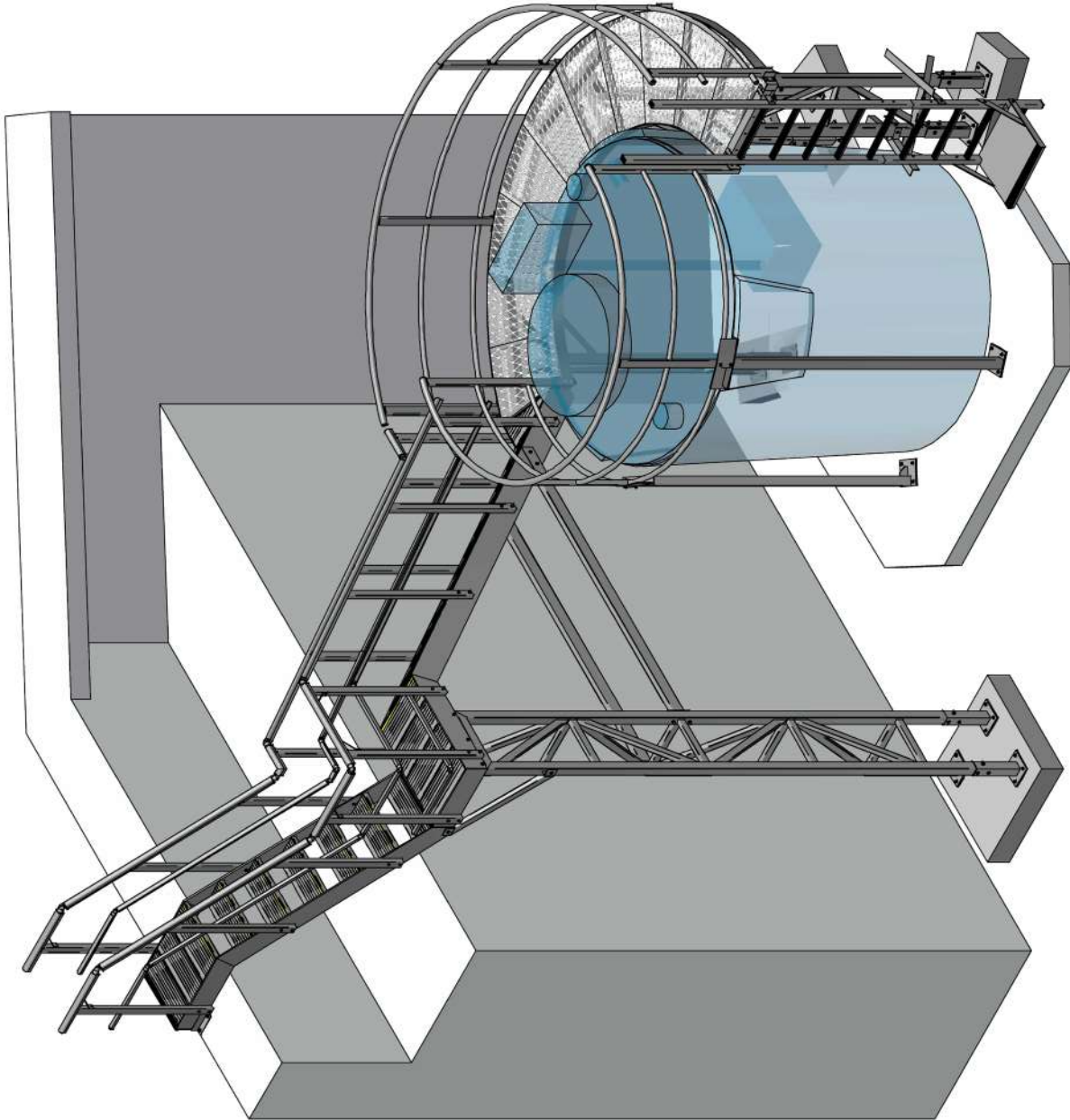


DRAWN BY:	AK
MODELED BY:	AK
CHECKED BY:	BP/BD/LK
DATE DRAWN:	29/05/2019
LAST SAVED:	26/06/2019
MATERIAL:	See BOM
FINISH:	Mill
TOLERANCES:	+0,-2.0;0.1"

Monkeytoe
EVERYTHING BETTER
0800 658 637 - www.monkeytoe.co.nz

Elevated Walkway & Access Stairs ASSY				
MONKEYTOE				
DWG No: 21364-1		21364		
		SHEET 1 OF 5	A3	
		SCALE 1:200	REV:04	
DO NOT SCALE	DIMENSIONS IN MILLIMETERS			

This drawing and associated design is the copyright and property of Monkeytoe Ltd. It shall not be used for any purpose or project, without prior written consent other than that designated by Monkeytoe Ltd.©



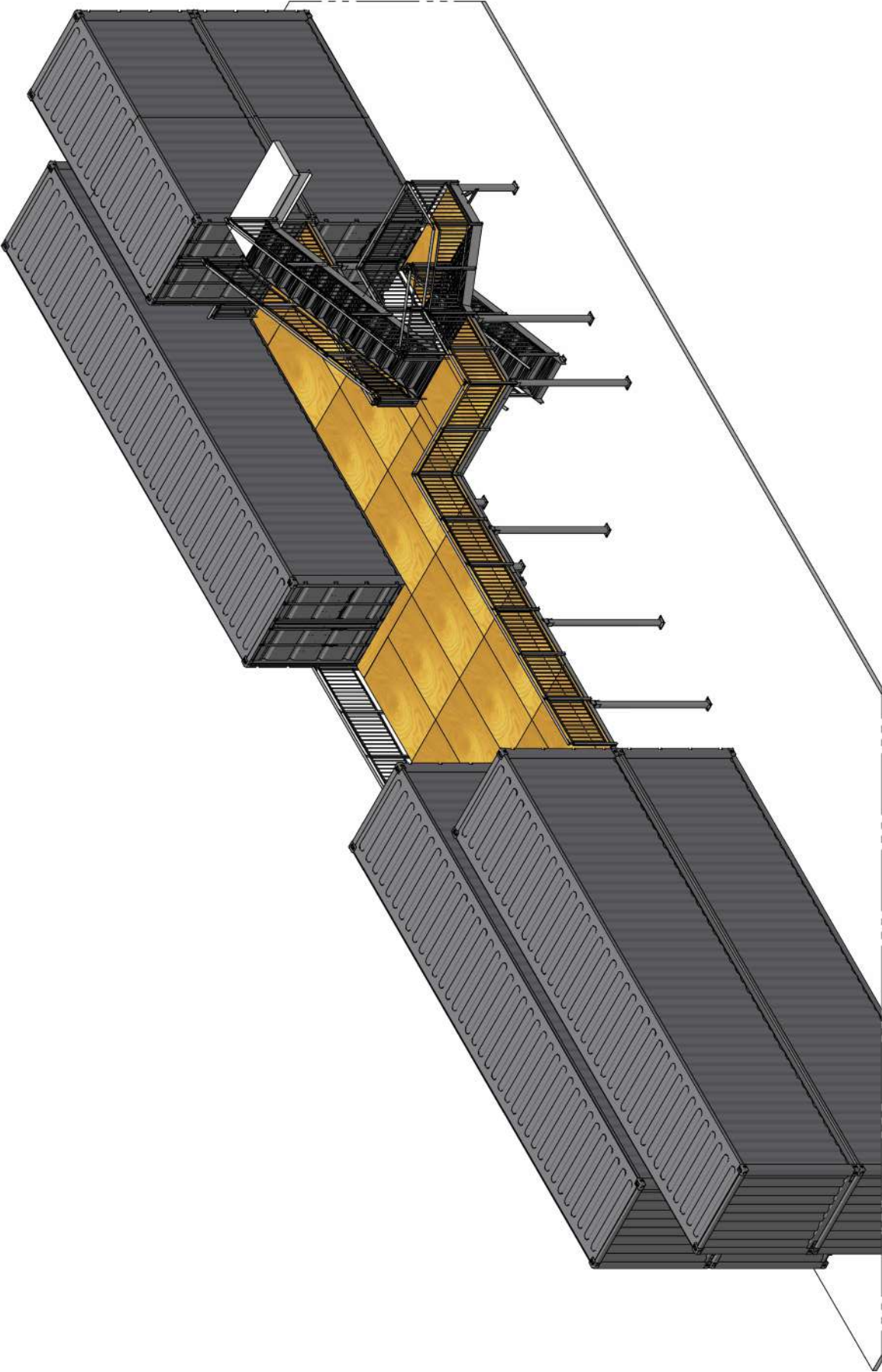
Tank Access and Stair Assembly			
MONKEYTOE			
DWG No: 20381-T2-1	20381		
	SHEET 1 OF 5	A3	REV:01
DO NOT SCALE	SCALE: 1:50	DIMENSIONS IN MILLIMETERS	

Monkeytoe

EVERYTHING BETTER
0800 658 637 - www.monkeytoe.co.nz

DRAWN BY:	KM
MODELED BY:	KM
CHECKED BY:	BPI/DLK
DATE DRAWN:	13/06/2019
LAST SAVED:	13/06/2019
MATERIAL:	SEE B.O.M.
FINISH:	Mill
TOLERANCES:	+0,-2.0.1"

This drawing and associated design is the copyright and property of Monkeytoe Ltd. It shall not be used for any purpose or project, without prior written consent other that designated by Monkeytoe Ltd.©

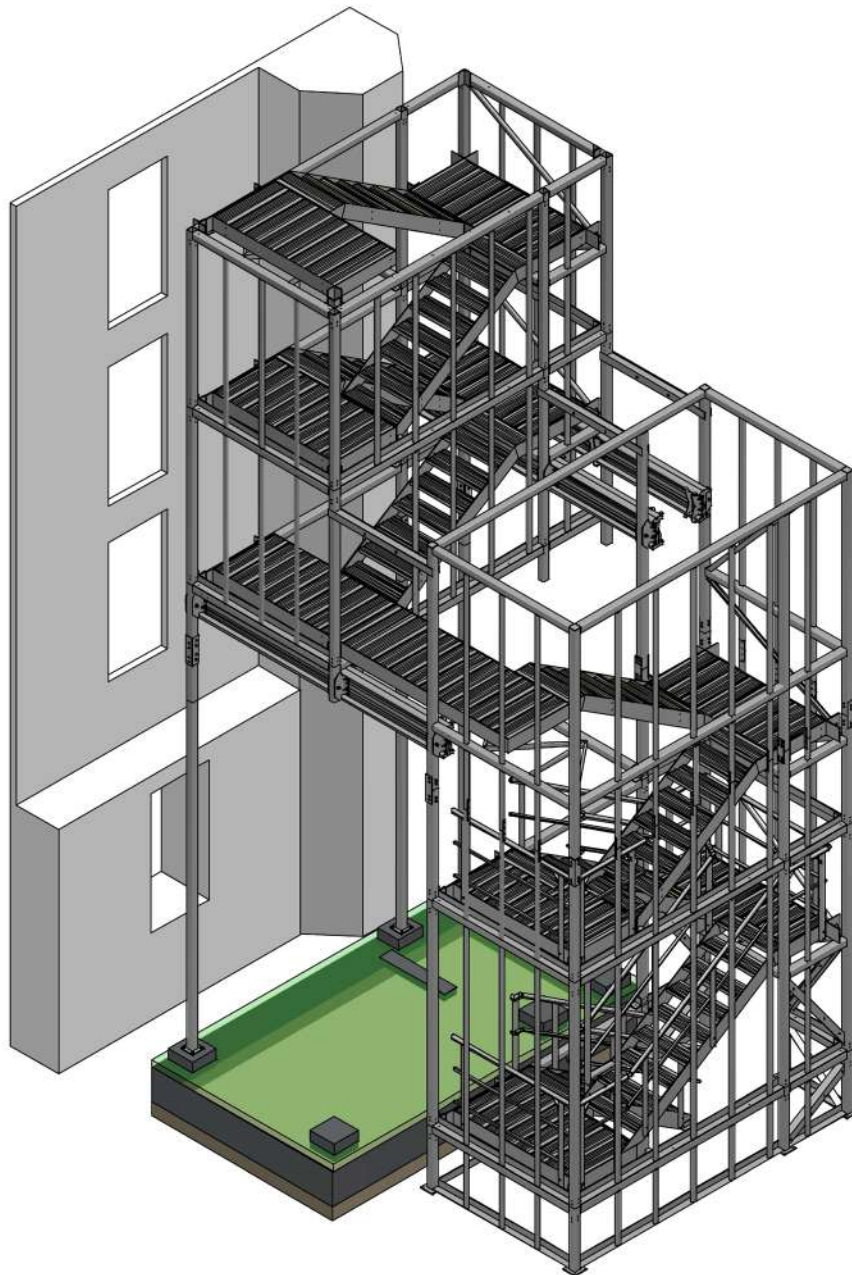


Stair and Container Platform Assembly			
MONKEYTOE			
DWG No: 22534-B-01	22534		
	SHEET 1 OF 5		A3
	SCALE: 1:50		REV:01
DO NOT SCALE		DIMENSIONS IN MILLIMETERS	

Monkeytoe

EVERYTHING BETTER
0800 658 637 - www.monkeytoe.co.nz

DRAWN BY:	KM
MODELED BY:	KM
PM:	BH
CHECKED BY:	BP/BD/LK
DATE DRAWN:	27/01/2020
LAST SAVED:	28/01/2020
MATERIAL:	SEE B.O.M.
FINISH:	Mill

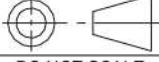


This drawing and associated design is the copyright and property of Monkeytoe Ltd. It shall not be used for any purpose or project, without prior written consent other than that designated by Monkeytoe Ltd. ©

DRAWN BY:	KM
MODELED BY:	KM
PM:	BH
CHECKED BY:	BP/BD/LK
DATE DRAWN:	25/02/2020
LAST SAVED:	26/02/2020
MATERIAL:	SEE B.O.M.
FINISH:	Mill

Monkeytoe

EVERYTHING BETTER
0800 658 637 - www.monkeytoe.co.nz

Fire Escape Stair		
MONKEYTOE		
DWG No: 22871-C-1		22871
 DO NOT SCALE	SHEET 1 OF 5	A3
	SCALE: 1:100	REV:01B
	DIMENSIONS IN MILLIMETERS	