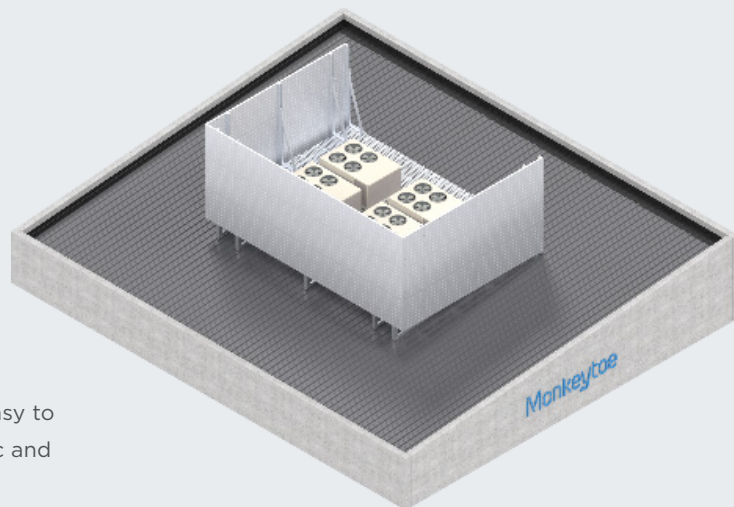


# HushMonkey - Reflective Acoustic Screening



### PRODUCT DESCRIPTION

The Hushmonkey RC26 reflective acoustic screening system is an easy to install, simple and innovative wall system which provides a simplistic and visually appealing barrier whilst reflecting unwanted noise away.

### TYPICAL USES / APPLICATIONS

- Perfect for a wide range of industrial applications
- Equipment platform screening
- Plantrooms
- Machine enclosures
- Data centres
- Hospitals
- Generator/Compressor Enclosures
- Power Stations
- Factories/Warehouses
- Airports
- Outdoor sound control walls

### CHARACTERISTICS / ADVANTAGES

- Highly durable providing long-term stability and performance
- Excellent acoustic performance
- Innovative, economical and straight forward installation system
- Easily adaptable and modular if requirements change
- As installed acoustic performance can be modelled very accurately with results of extensive field and laboratory testing.
- Can be run vertical or horizontally for visual effect
- Pre-engineered system configurable for all wind loads
- Highly rigid extrusion profile offers greater sound reduction than sheet type barriers

### TECHNICAL DATA / MATERIALS

- 254 x 40mm architectural marine-grade aluminium channel with a powder coated exterior.
- Surface weight - 7.5kg/m<sup>2</sup>
- Materials - 6060-T5 aluminium
- Channel dimensions - 254mm x 40mm

### TESTS

#### APPROVALS / STANDARDS

- Structural design action B1 & B2
- AS/NZS 1170 Standards Australia / New Zealand (Relevant parts)
- Transmission loss testing conducted by University of Auckland Acoustic Testing Services, to both ISO 10140-2 (Reports available by request)

### WARRANTY

- 10 years product warranty
- Product Warranty is valid in accordance to the PS1 Engineering Standard that it has been designed to

### MAINTENANCE

- It is recommended that plant platforms are included in the standard 'building warrant of fitness' inspections.
- All damage or loose fixings to be reported immediately to asset manager or building owner for correction.

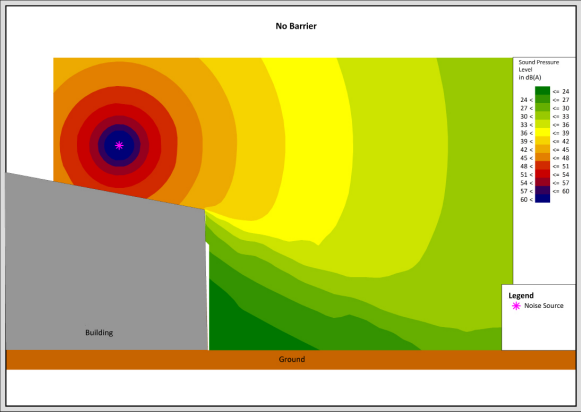


Fig.1 - No barrier

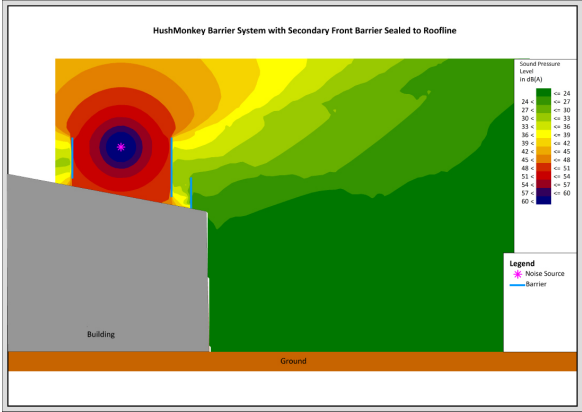


Fig.2 - HushMonkey barrier with second front barrier sealed to roofline to allow airflow

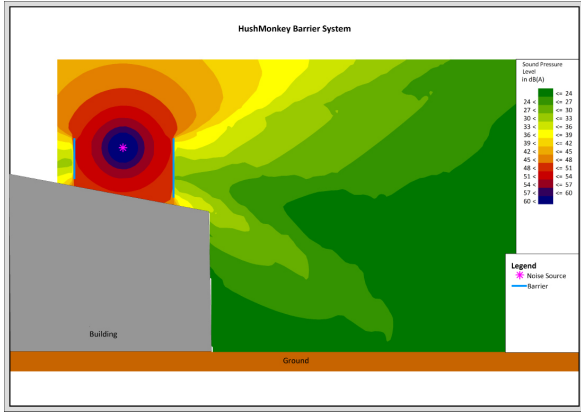
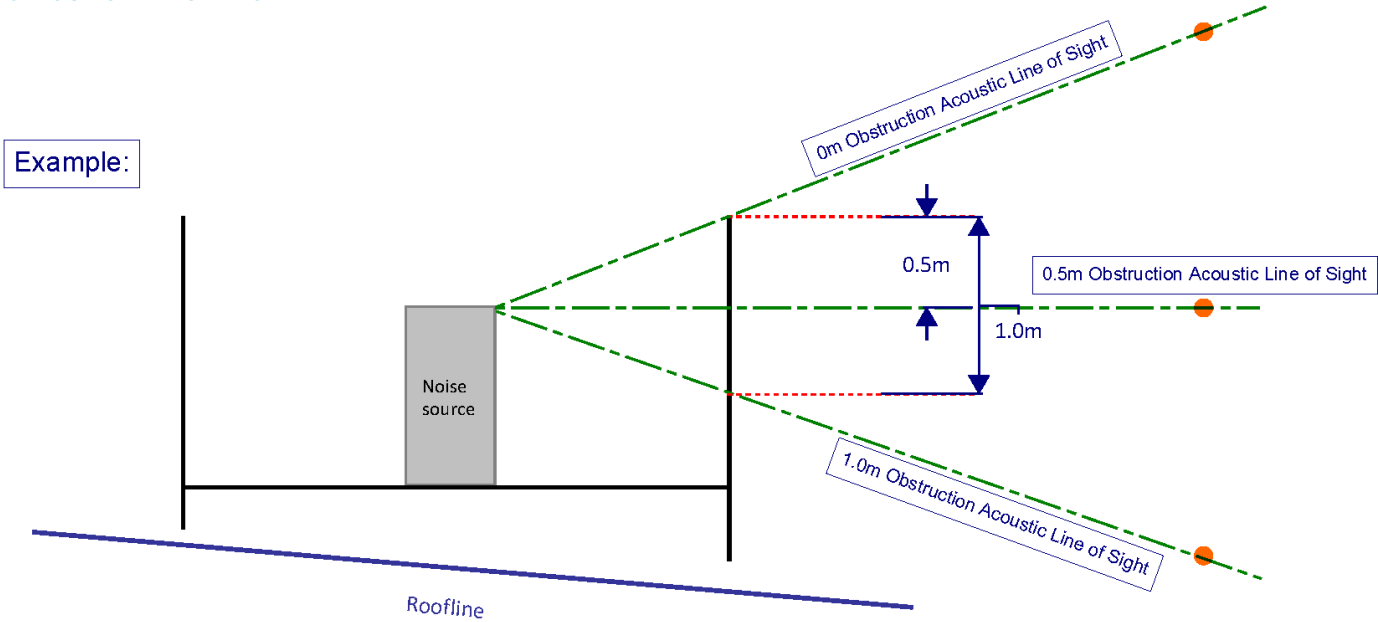
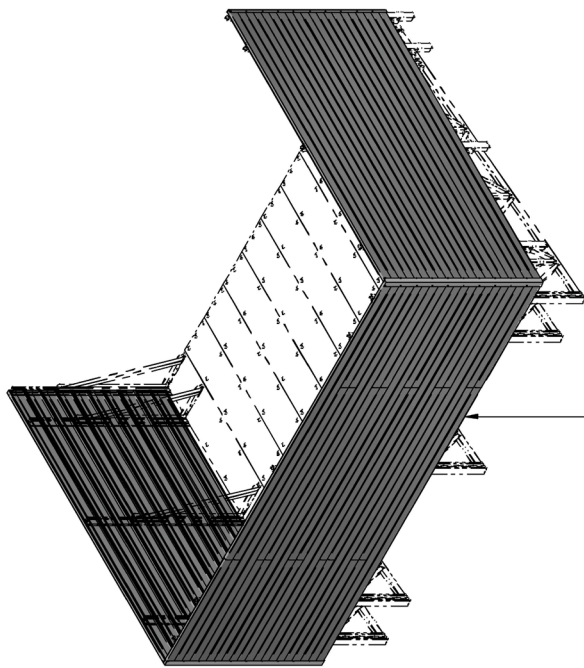


Fig.3 - HushMonkey barrier

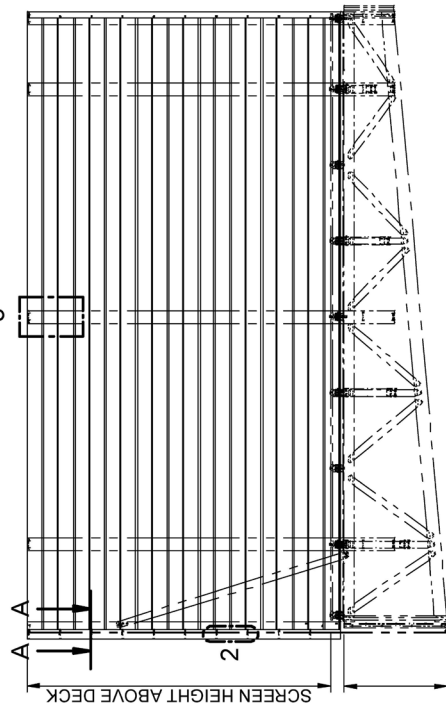
OBSTRUCTION DIAGRAMS



HUSHMONKEY – REFLECTIVE (2mm) SOUND REDUCTION INDEX	
Frequency (Hz)	dB
50	10.8
63	13.5
80	12.3
100	11.6
125	15.0
160	14.2
200	14.6
250	16.2
315	17.2
400	19.6
500	21.0
630	22.7
800	24.4
1000	26.3
1250	28.3
1600	30.1
2000	31.4
2500	32.5
3150	33.2
4000	33.0
5000	31.5
Rw Rating	26
Sound Reduction Index in accordance with ISO 10140-2	

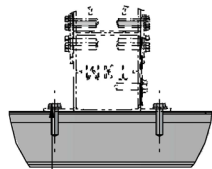


WHEN THERE'S A JOIN IN THE  
ACOUSTIC EXTRUSION, ALTERNATE  
LEFT TO RIGHT AND APPLY JOINER PLATE

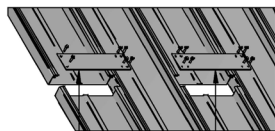


REFER TO PLATFORM SPECIFIC DETAILS  
400mm NOM.

SIDE ELEVATION

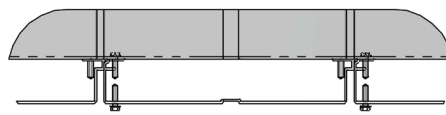


DETAIL 1  
1:4



TOP JOINER PLATE (INSIDE ONLY)  
FIXED WITH 12G 22mm TEKs  
INTO TOP AND BOTTOM OF  
ACOUSTIC EXTRUSION  
AND TOP OF BELOW EXTRUSION

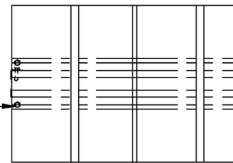
JOINER PLATE (INSIDE ONLY)  
FIXED WITH 12G 22mm TEKs  
INTO TOP AND BOTTOM OF  
ACOUSTIC EXTRUSION  
AND TOP OF BELOW EXTRUSION  
AND BOTTOM OF ABOVE EXTRUSION



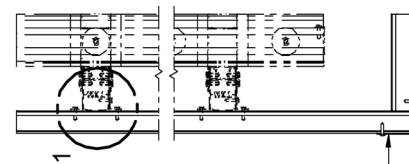
DETAIL 2  
1:5  
PANEL HORIZONTAL JOIN

PM16 (50x50x3mm EA)  
OUTSIDE CORNER  
FIXED WITH 12G 22mm TEKs  
TOP AND BOTTOM OF  
ACOUSTIC EXTRUSION

FIXED WITH 12G 22mm TEKs  
BOTH SIDES OF SCREEN SUPPORT  
FOLLOWING V-GROVE IN  
ACOUSTIC EXTRUSION



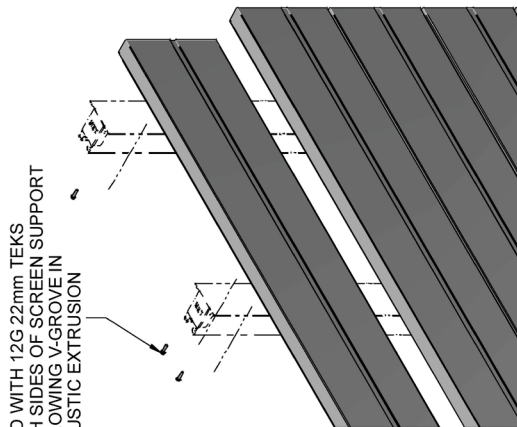
DETAIL 3  
1:10



75x75x2.5/3mm EA - OUTSIDE CORNER  
FIXED WITH 12G 22mm TEKs  
@ 245mm CTRS

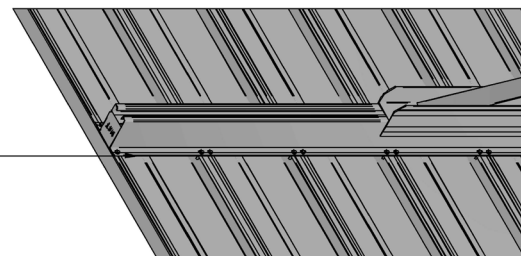
SECTION A-A  
1:10

DRAWN BY:	LJK
MODELED BY:	LJK
CHECKED BY:	BP/BD/LK
DATE DRAWN:	21/07/2020
LAST SAVED:	17/08/2020
MATERIAL:	SEE B.O.M.
FINISH:	MIII
TOLERANCES:	+0,-2.0;0.1"

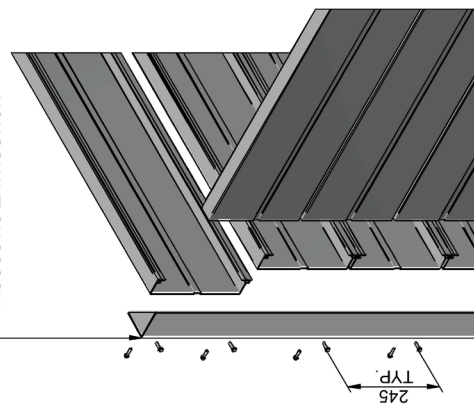


PANEL END & NON JOIN POST FIXING DETAIL

FIXED WITH 12G 22mm TEKs  
BOTH SIDES OF SCREEN SUPPORT  
FOLLOWING V-GROVE IN  
ACOUSTIC EXTRUSION



75x75x2.5/3mm EA  
OUTSIDE CORNER  
FIXED WITH 12G 22mm TEKs  
TOP AND BOTTOM OF  
ACOUSTIC EXTRUSION

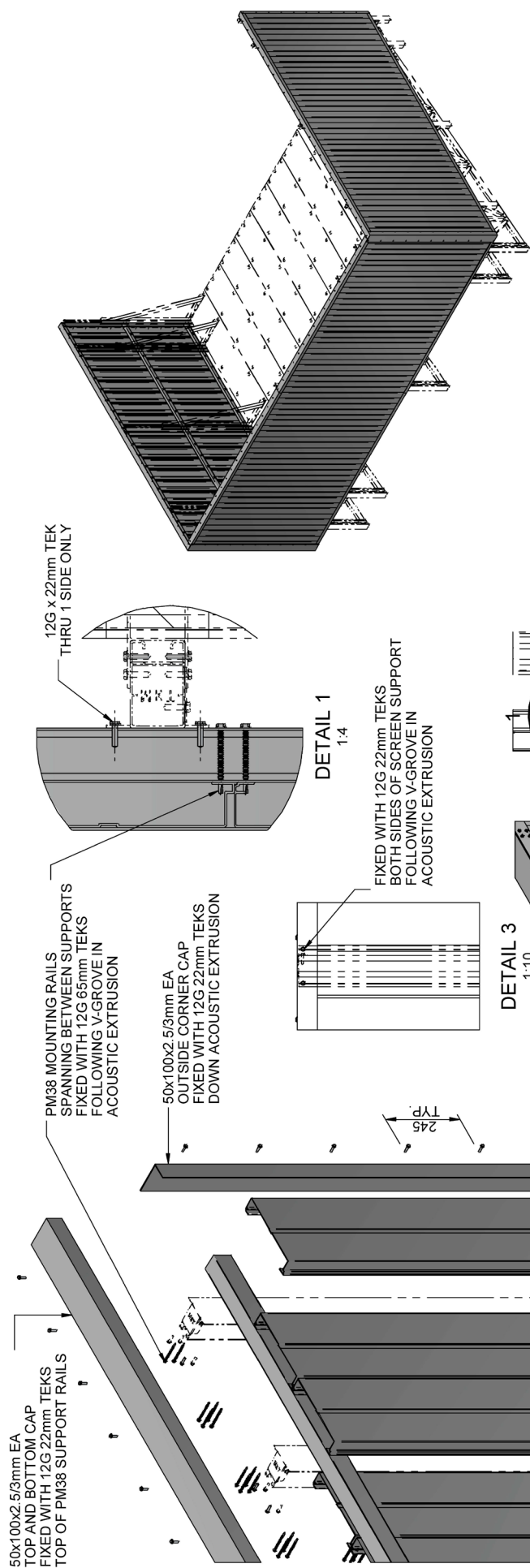


PANEL CORNER JOIN DETAIL

PLATFORM REFLECTIVE ACOUSTIC SCREEN INSTALL DETAILS			
MONKEYTOE - 'HUSHMONKEY'			
DWG No: MPAC-ID-HRA-01	2004		
SHEET 1 OF 1		A3	REV:01
DO NOT SCALE		SCALE: 1:40	
		DIMENSIONS IN MILLIMETERS	

Monkeytoe

EVERYTHING BETTER  
0800 658 637 - [www.monkeytoe.co.nz](http://www.monkeytoe.co.nz)

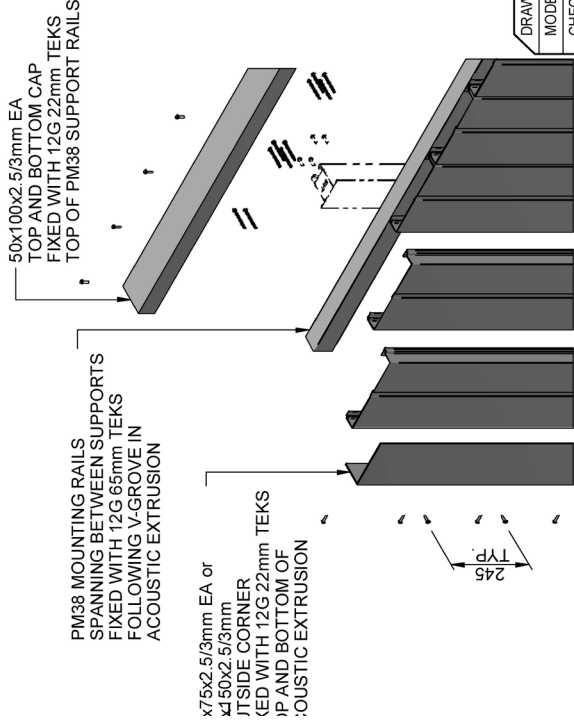


DETAIL 1  
1:4

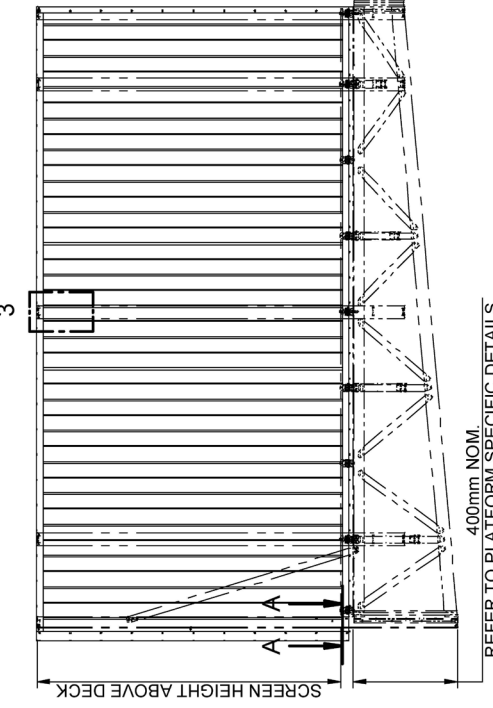
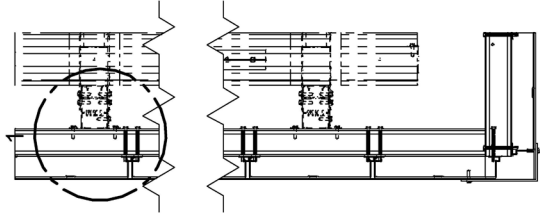
FIXED WITH 12G 22mm TEKs  
BOTH SIDES OF SCREEN SUPPORT  
FOLLOWING V-GROVE IN  
ACOUSTIC EXTRUSION

DETAIL 3  
1:10

PANEL END & NON JOIN POST FIXING DETAIL



PANEL CORNER JOIN DETAIL



DRAWN BY:	LJK
MODELED BY:	LJK
CHECKED BY:	BP/BD/LK
DATE DRAWN:	12/08/2020
LAST SAVED:	14/08/2020
MATERIAL:	SEE B.O.M.
FINISH:	MIII
TOLERANCES:	+0,-2.0/0.1"

PLATFORM VERTICAL REFLECTIVE ACOUSTIC SCREEN INSTALL DETAILS			
MONKEYTOE - 'HUSHMONKEY'			
DWG No:	MPAC-ID-VRA-01	2004	
		SHEET 1 OF 2	A3
		SCALE: 1:40	REV:01
		DO NOT SCALE	DIMENSIONS IN MILLIMETERS

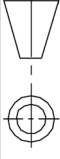
Monkeytoe

EVERYTHING BETTER  
0800 658 637 - [www.monkeytoe.co.nz](http://www.monkeytoe.co.nz)

KPA loading	Vertical support spacings	900mm	1200mm	1500mm	1800mm	2100mm	2400mm
	1 kpa	2400mm	2400mm	2400mm	1750mm	1100mm	750mm
	2 kpa	2400mm	2400mm	1500mm	875mm	550mm	375mm
	3 kpa	2400mm	2000mm	1025mm	575mm	375mm	250mm
	4 kpa	2400mm	1500mm	750mm	425mm	275mm	175mm
ROOF SHEETING AREA PER PW38 RAIL							

DRAWN BY:	LJK
MODELED BY:	LJK
CHECKED BY:	BP/BD/LK
DATE DRAWN:	12/08/2020
LAST SAVED:	14/08/2020
MATERIAL:	SEE B.O.M.
FINISH:	MIII
TOLERANCES:	+0,-2.0;0.1°

**Monkeytoe**  
EVERYTHING BETTER  
0800 658 637 - [www.monkeytoe.co.nz](http://www.monkeytoe.co.nz)

PLATFORM VERTICAL REFLECTIVE ACOUSTIC SCREEN INSTALL DETAILS			
MONKEYTOE - 'HUSHMONKEY'		2004	
DWG No:	MPAC-ID-VRA-01	SHEET 2 OF 2	
		SCALE: 1:1	REV:01
DO NOT SCALE		DIMENSIONS IN MILLIMETERS	