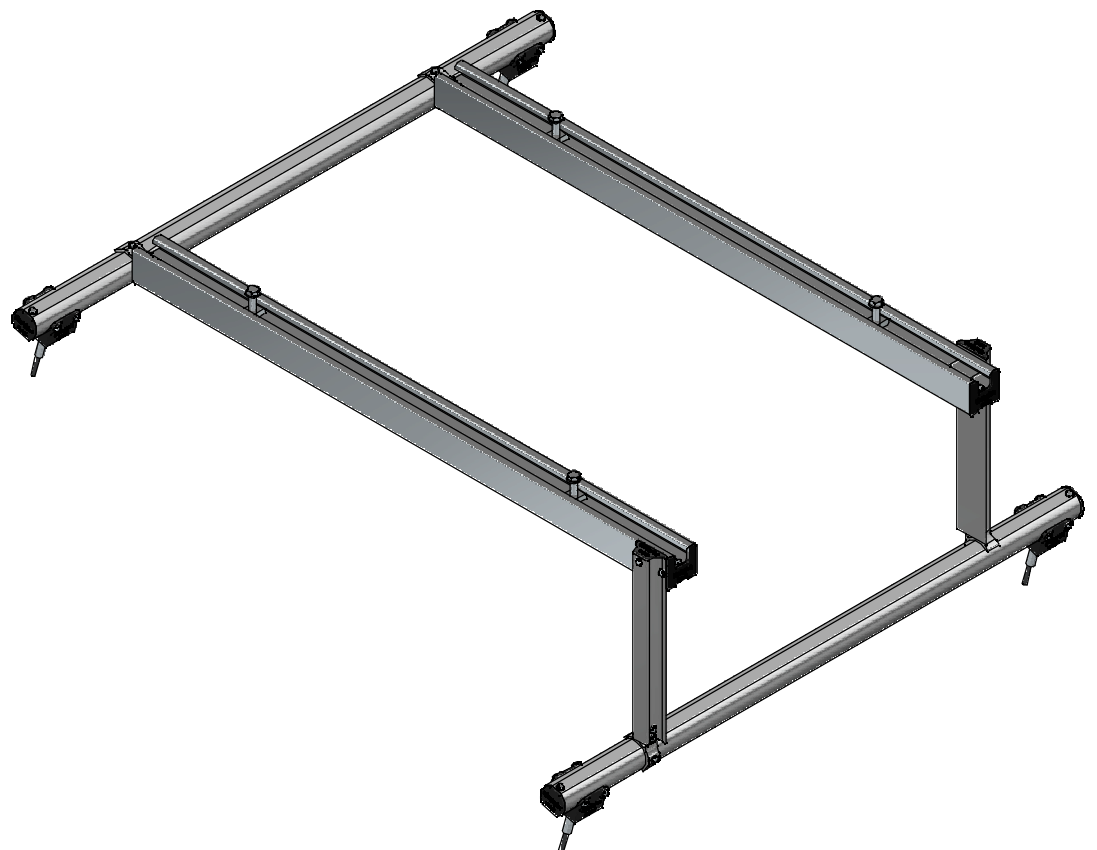
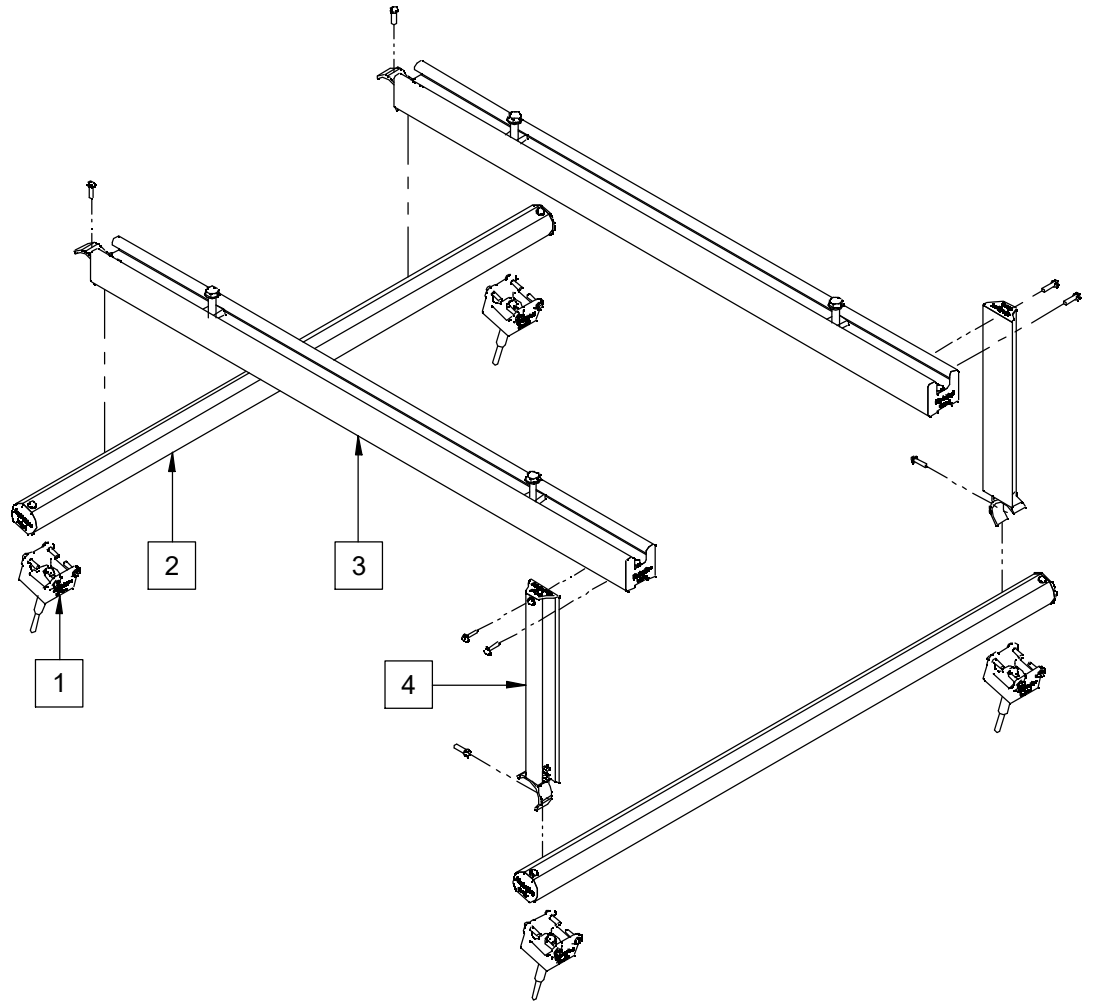


Standard Condenser Mount Install Procedure.

ITEM	CODE	ITEM QTY.	DESCRIPTION
1	RC02	4	MKT Roof Clip
2	CS020.*	2	Standard Roof Rail
3	CS011.*	2	Standard Adjustable Rail
4	CS013.*	2	Adjustable Upright
5	CS014	1	Condenser Fixing Kit


- 1) Fix roofing clips down to purlins. See page 4 for further details. Use 10Gx22mm TEK screws to connect to roof rails (#2).
- 2) Clip top rail (#3) to upper roof rail (#2) and space to suit the foot print of the AC unit. Screw on using 1 x 22mm TEK screw.
- 3) Level top rail (#3) and support using the upright (#4). Screw together using 2 x 22mm TEK screws. Fix upright (#4) to the bottom roof rail (#2) using 1 x 22mm TEK screw.
- 4) Bolt AC unit using stainless steel spring nuts provided. Make sure that the roof is brushed or washed to remove any filings.



NOTE:
If this unit is more than 1m high, you will need to strap it back to roof rails to protect it from strong winds.

Monkeytoe

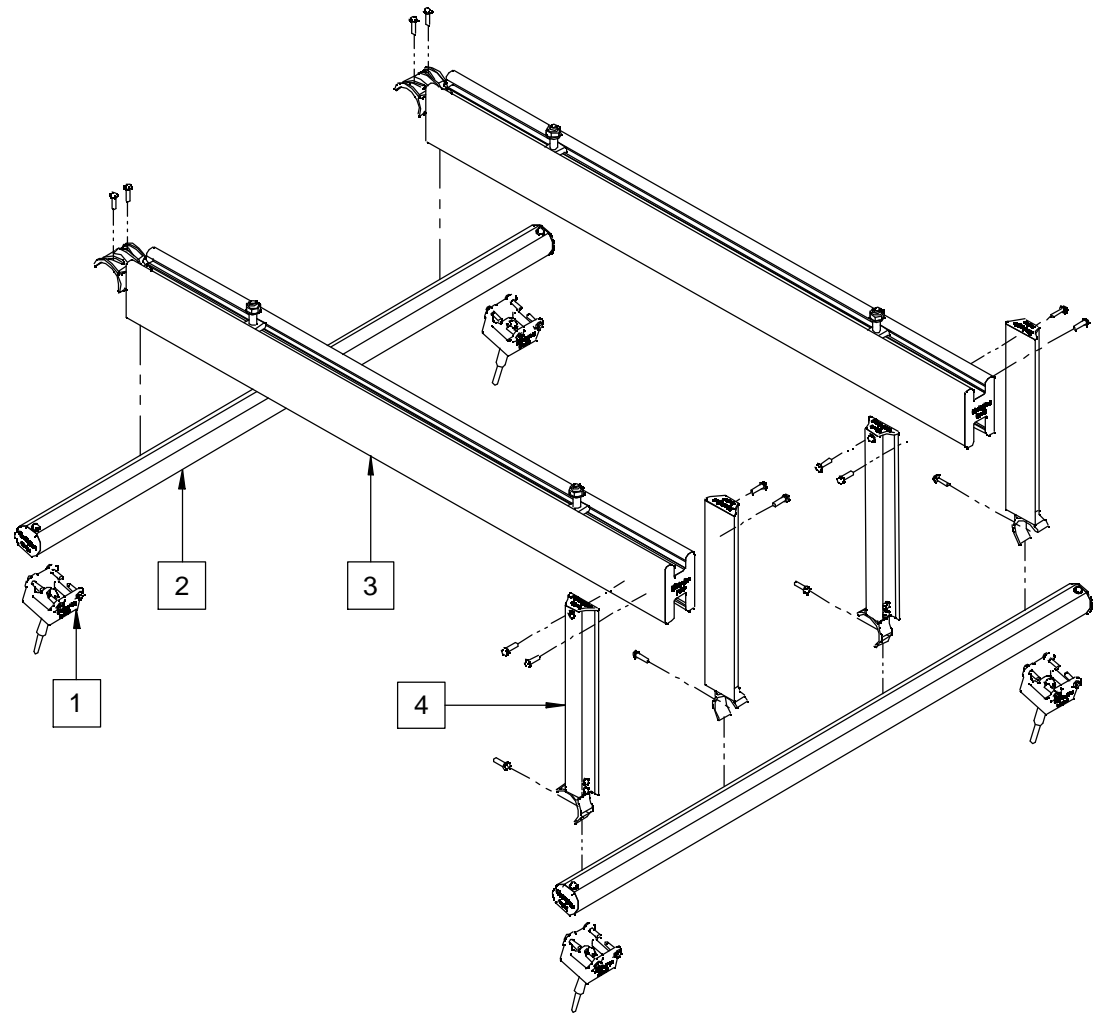
EVERYTHING BETTER
0800 658 637 - www.monkeytoe.co.nz

Condenser Mount Install Guide		
2004-CON-I-01		
DWG No: MONKEYTOE GROUP	23/06/2019	
	SHEET 1 OF 4	A3
	SCALE: 1:5	REV:01
DO NOT SCALE	DIMENSIONS IN MILLIMETERS	

Heavy Duty Condenser Mount Install Procedure.

ITEM	CODE	ITEM QTY.	DESCRIPTION
1	RC02	4	MKT Roof Clip
2	CS020.*	2	Standard Roof Rail
3	CS012.*	2	Heavy Duty Adjustable Rail
4	CS013.*	4	Adjustable Upright
5	CS014	1	Condenser Fixing Kit

- 1) Fix roofing clips down to purlins. See page 4 for further details. Use 10Gx22mm TEK screws to connect to roof rails (#2).
- 2) Clip top rail (#3) to upper roof rail (#2) and space to suit the foot print of the AC unit. Screw on using 1 x 22mm TEK screw.
- 3) Level top rail (#3) and support using the upright (#4). Screw together using 2 x 22mm TEK screws. Fix upright (#4) to the bottom roof rail (#2) using 1 x 22mm TEK screw.
- 4) Bolt AC unit using stainless steel spring nuts provided. Make sure that the roof is brushed or washed to remove any filings.



NOTE:
If this unit is more than 1m high, you will need to strap it back to roof rails to protect it from strong winds.

Monkeytoe

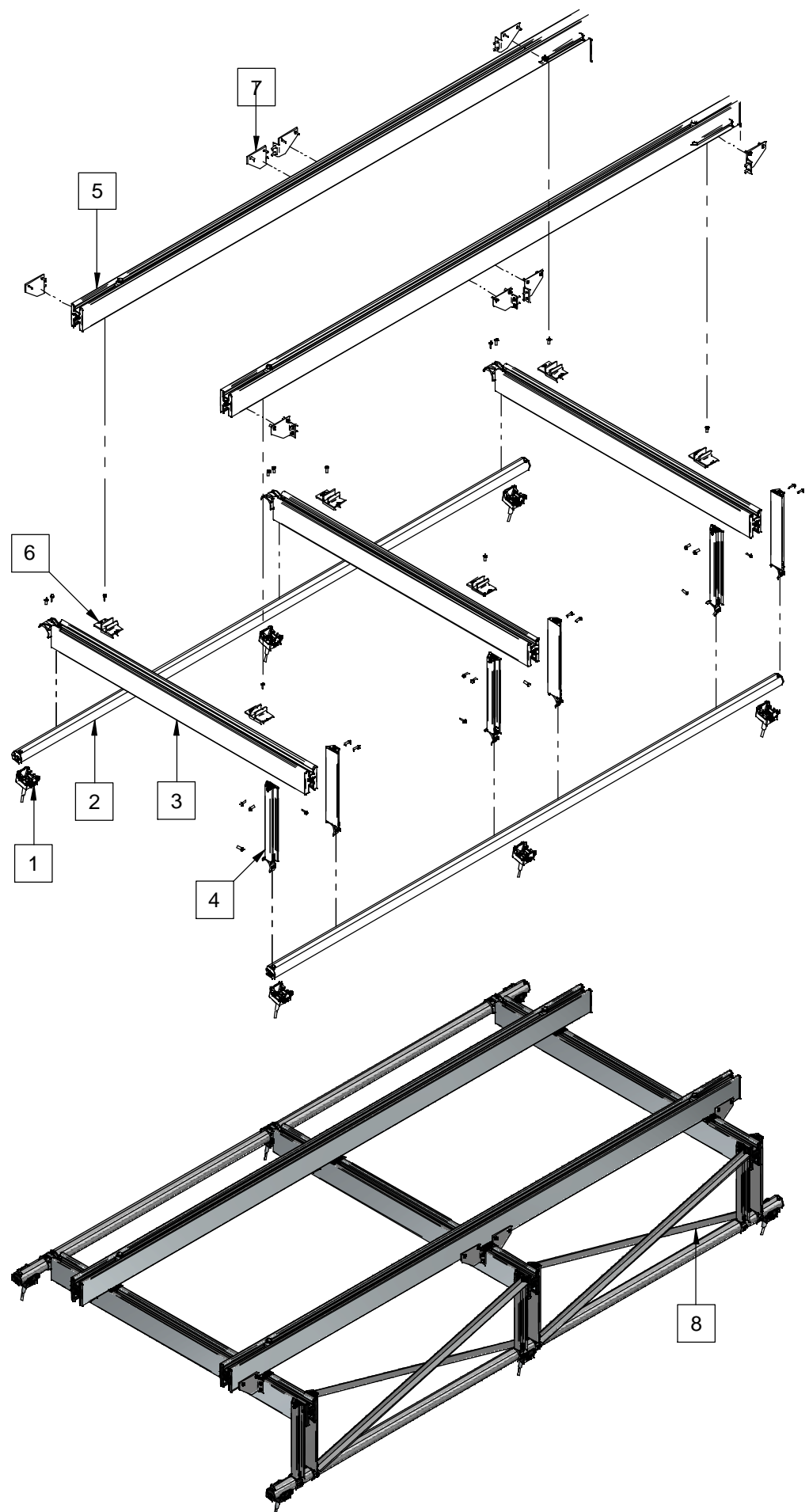
EVERYTHING BETTER
0800 658 637 - www.monkeytoe.co.nz

Condenser Mount Install Guide		
2004-CON-I-01		
DWG No: MONKEYTOE GROUP	23/06/2019	
	SHEET 2 OF 4	A3
	SCALE: 1:1	REV:01
DO NOT SCALE	DIMENSIONS IN MILLIMETERS	

Super Heavy Duty Condenser Mount Install Procedure.

ITEM	CODE	ITEM QTY.	DESCRIPTION
1	RC02	6	MKT Roof Clip
2	CS020.*	2	Standard Roof Rail
3	CS012.*	3	Heavy Duty Adjustable Rail
4	CS013.*	6	Adjustable Upright
5	PM03	2	Super Heavy Duty Unit Rail
6	MW006	6	MKT Walkway Clip
7	MP011.*	8	Bracing Plate
8	PA025.025.03	4	25 x 3 Equal Angle
9	-	1	SHD Condenser Fixing Kit

- 1) Fix roofing clips down to purlins. See page 4 for further details. Use 10Gx22mm TEK screws to connect to roof rails (#2).
- 2) Clip top rail (#3) to upper roof rail (#2) and space evenly along roof rail. Screw on using 2 x 22mm TEK screw.
- 3) Level top rail (#3) and support using the upright (#4). Screw together using 2 x 22mm TEK screws. Fix upright (#4) to the bottom roof rail (#2) using a 22mm TEK screw.
- 4) Attach unit rail (#5) to top rail (#3) using MKT clips (#6) and a 22mm TEK screw. Space rails to match unit feet.
- 5) Brace unit rail (#5) to each top rail (#3) with bracing plates (#7) and 4 x 22mm TEK screw.
- 6) Cross brace mount using 25 x 3 equal angle(#8). Trim to suit rail positions and fix to uprights (#4) with 22mm TEK screws.
- 7) Bolt AC unit using stainless steel spring nuts provided. Make sure that the roof is brushed or washed to remove any filings.




NOTE:

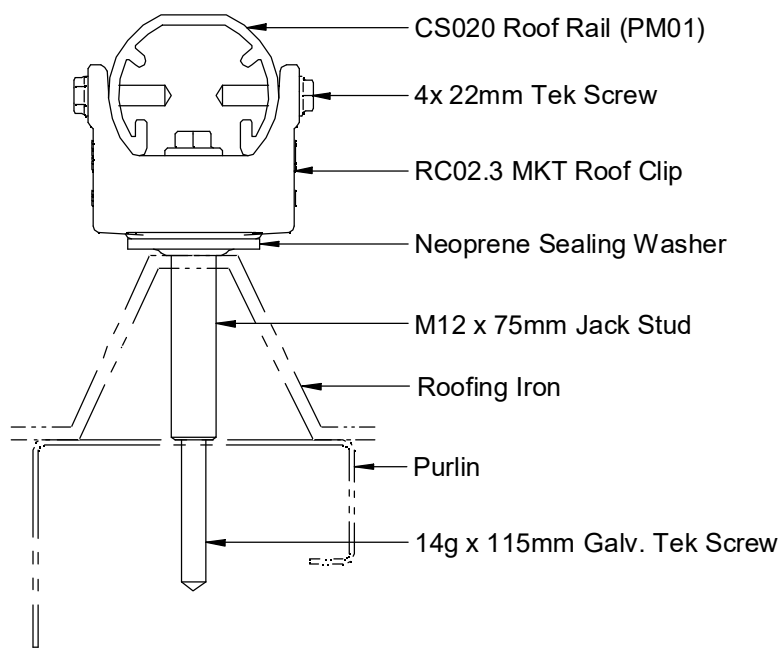
If this unit is more than 1m high, you will need to strap it back to roof rails to protect it from strong winds.

Monkeytoe

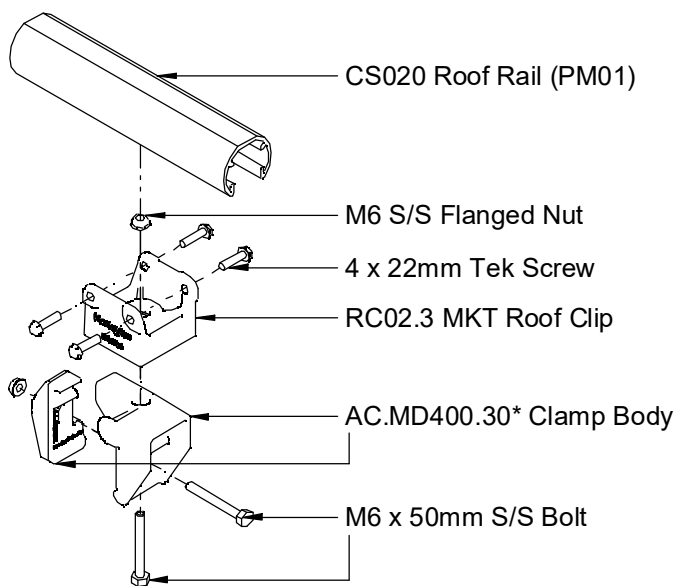
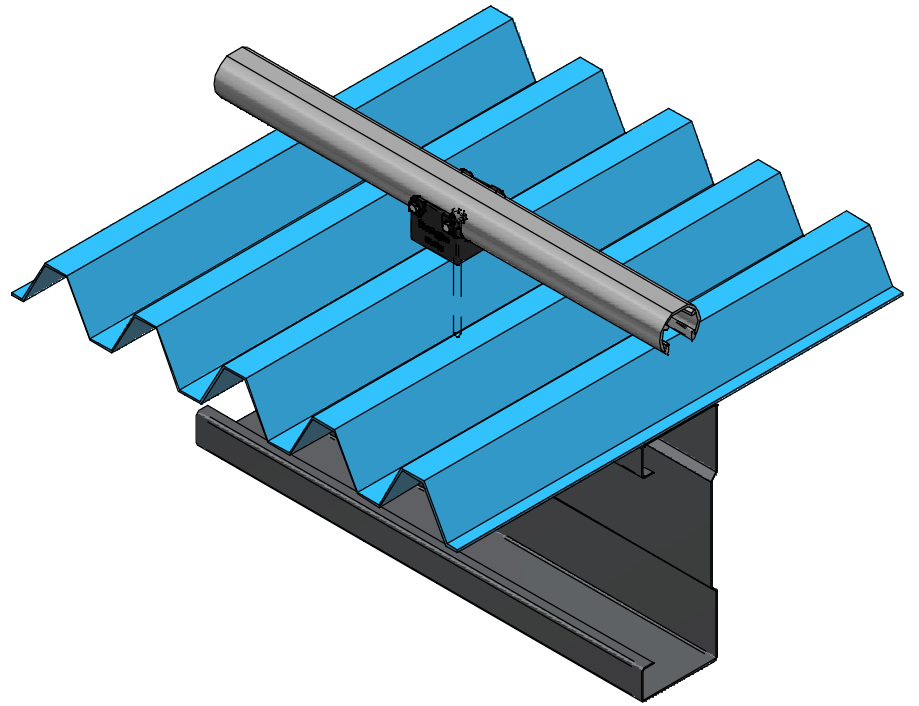
EVERYTHING BETTER
0800 658 637 - www.monkeytoe.co.nz

Condenser Mount Install Guide		
2004-CON-I-01		
DWG No: MONKEYTOE GROUP	23/06/2019	
	SHEET 3 OF 4	A3
	SCALE: 1:1	REV:01
DO NOT SCALE	DIMENSIONS IN MILLIMETERS	

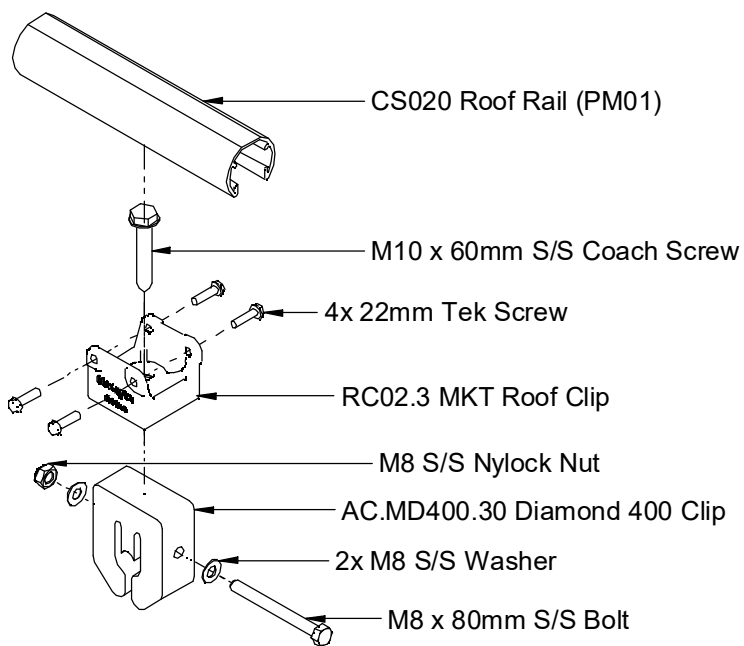
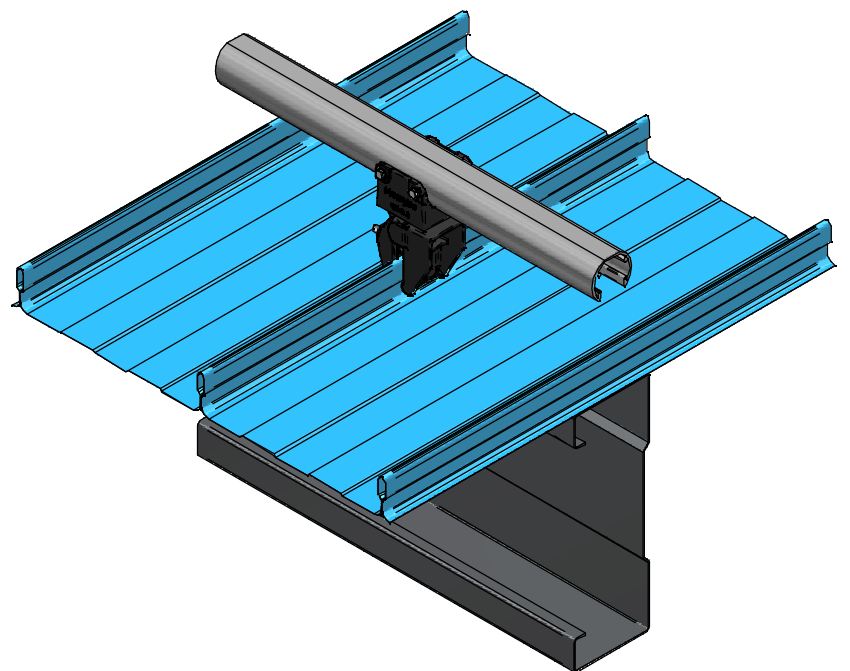
RC02 Roof Clip Install Details.



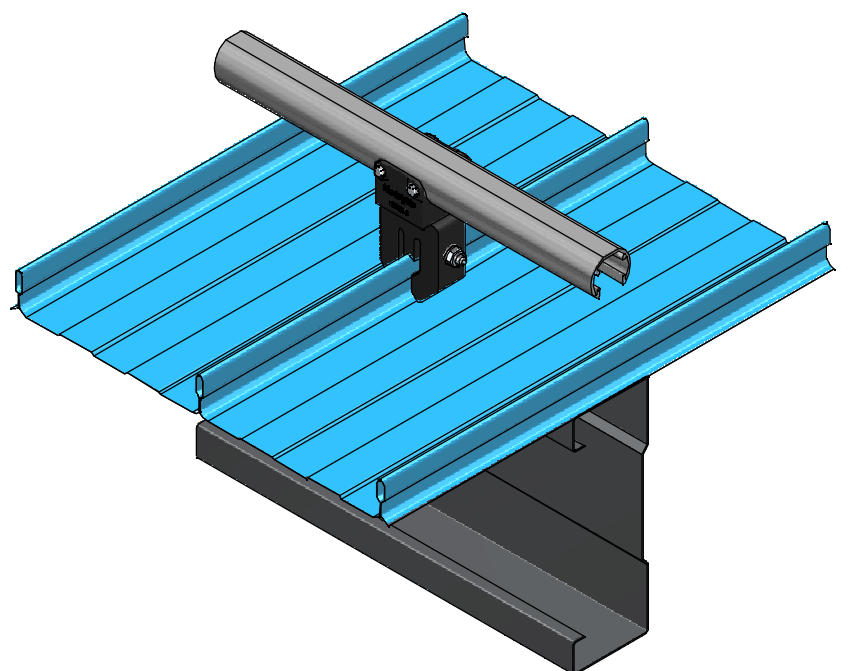
RC02.3 JACK STUD
1:2



RC02.3 AC.MD400 DETAIL
1:5



RC02.3 DIMOND 400
1:5



This drawing and associated design is the copyright and property of Monkeytoe Ltd. It shall not be used for any purpose or project, without prior written consent other than designated by Monkeytoe Ltd. ©

Monkeytoe

EVERYTHING BETTER
0800 658 637 - www.monkeytoe.co.nz

Condenser Mount Install Guide		
2004-CON-I-01		
DWG No: MONKEYTOE GROUP		23/06/2019
	SHEET 4 OF 4	A3
	SCALE: 1:1	REV:01
DO NOT SCALE		DIMENSIONS IN MILLIMETERS