



FIXING
Monkeytoe
TO YOUR ROOF

Monkeytoe

www.monkeytoe.co.nz | 0800 658 637



FIXING MONKEYTOE TO YOU ROOF

TABLE OF CONTENTS

01	The Two Roofing Types
02	MKT Roof Clips and Roofing Types
03	MKT Roof Clips and Holding Weight
04	MKT Roof Clips and Avoiding Leaks and Damage
05	Mounting To Other Roof Types
06	Mounting To Membrane

THE TWO ROOFING TYPES

IN THIS EBOOK WE DISCUSS HOW OUR MONKEYTOE ROOF CLIP DESIGN WORKS AND THE BENEFITS BEHIND ITS USAGE.

Do you hate stepping in puddles with your new shoes or the feeling of your socks falling down mid run? We feel the same about your roofing system!

Like all great innovations Monkeytoe was born from a frustration, a frustration surrounding roof mounting and access systems that left unwanted damage and leakage issues when put in place.

That's when the concept for Monkeytoe was born, designing two different types of Roof Mounting Clips so that each roofing style had one to suit their own specific needs.

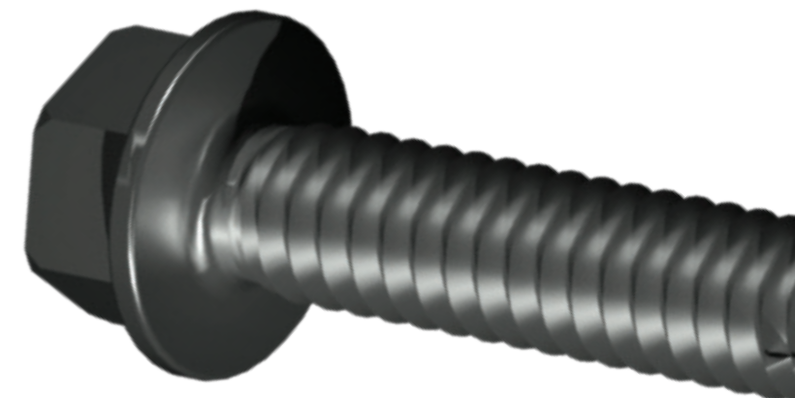
Monkeytoe has designs to fit both types of roofing styles, Top Fix/ Trapezoidal roofing and hidden fix/secret fix roofing, but the question is what roof do you have?

- TOP FIX

Top fix or Trapezoidal roofing is the most common type of roofing material. This type of roofing can be identified by the fixings used such as tek screws or nails that fasten it to the roof however, standard corrugated Iron is also considered top fix.

- HIDDEN FIX

but is clipped on to pre-installed clips mounted to the framing, the original 'Monkeytoe' was designed for this roofing material.



MONKEYTOE ROOF MOUNTING CLIPS AND ROOFING STYLES

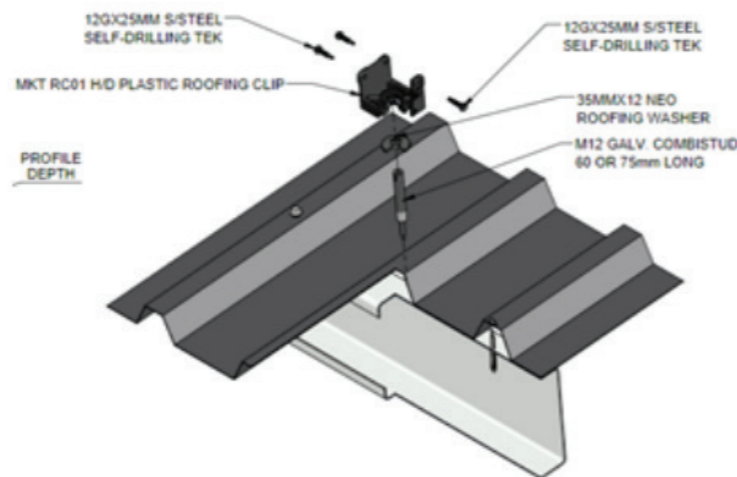
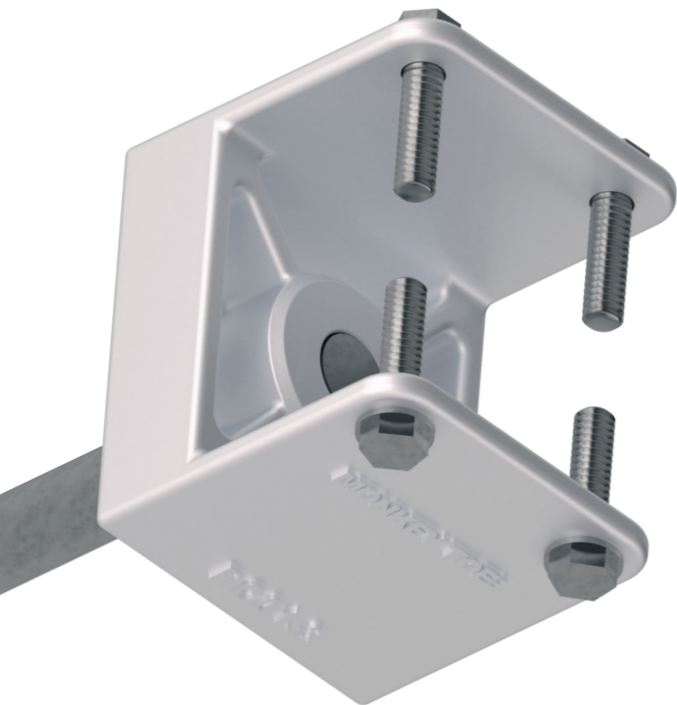
02

HOW DO OUR CLIPS MOUNT AND HOLD ROOF PLATFORMS AND WALKWAYS ON TOP FIX STYLE ROOFS?

Monkeytoe top fix clips use the same fixing position as a Tek screw fastener. Using a unique 'Jack Stud' with a M12 thread and a Tek screw end, the jack stud fixes to the roof purlin securely. Once the jack stud is installed this is followed by the sealing washer and then the roofing clip which threads onto the stud. As the roofing clip is tightened the washer seals against the iron providing a tight seal.

For deeper roofing systems such as Kingspan panels or double layer warm roof systems, there are customisable length stud fixings available. These have been tested and engineered to mount plant/HVAC maintenance platforms and walkways in roofing systems over 150 mm thick. When mounting to a multi-layer Warm roof system always ensure the fixings go right to the building or have been approved.

For special applications with high winds are have also developed a 'high uplift' fixing see here (link to high uplift in design for wind piece)

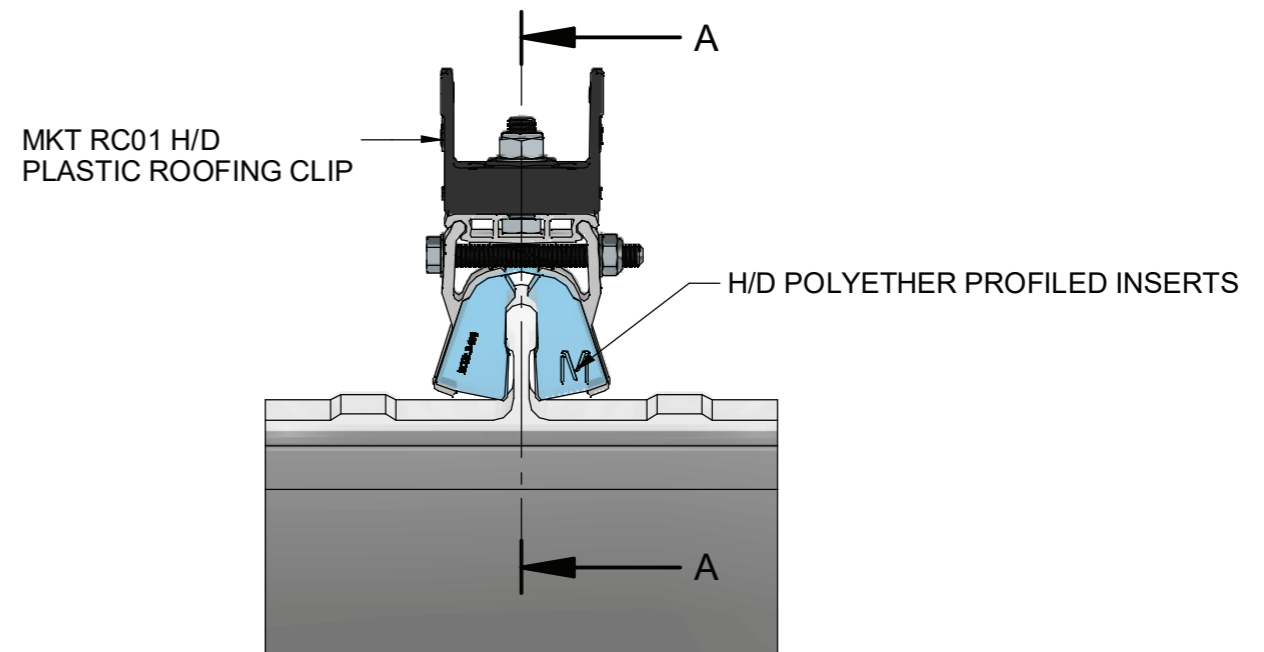
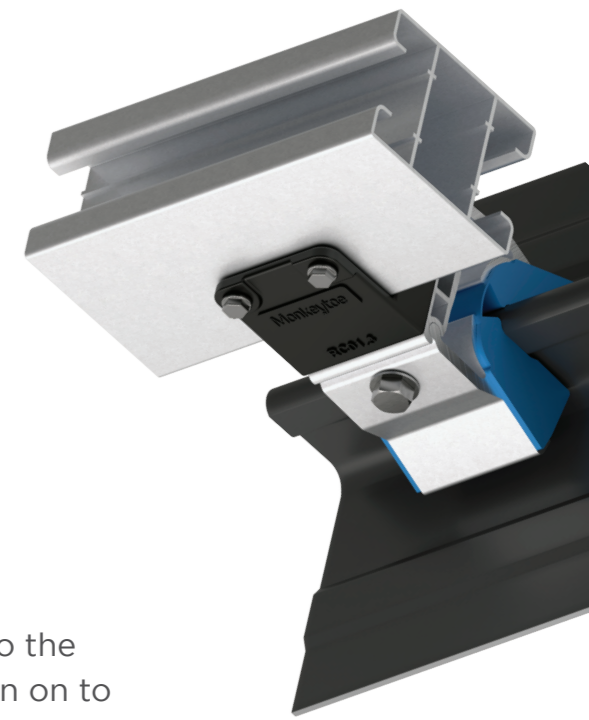


I HAVE A HIDDEN FIX STYLE ROOF... WHAT DO I USE?

Hidden fix clips come in two styles which both clamp to the profile directly above the roofing clip that holds the Iron on to the roof.

How these work is that they clamp onto the roof with an insert that is shaped to your particular profile, to identify the correct profile check this guide here (needs to be Open). As the clips clamp tightly to the iron the inserts mold slightly to the shape, providing a strong grip on the hidden clip without scratching or damaging the protective coating of the iron. This then provides a transfer of the loads back to the building.

Monkeytoe have 2 styles of hidden fix systems these are the RC03 and RC07. The RC07 is a newer clip with a specially formulated elastomer providing greater capacity, this is currently available for the common profiles and will eventually be available for all systems.



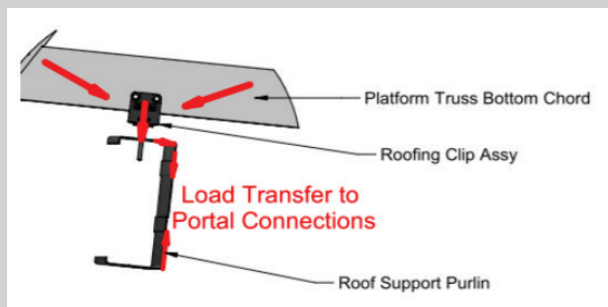
MONKEYTOE ROOF MOUNTING CLIPS AND HOLDING WEIGHT

03

Both roof clips (either top fix or clamp fix) ensure loads are transferred directly back to the building structure without loading the iron. For the RC01 the load goes directly onto the Combistud and then the purlin. This allowing the weight to be transferred directly to the roof purlin which is part of the building structure. With the RC03 and RC07 the plastic or elastomer insert grips the iron against the hidden fix clip (of the roofing iron), which is fastened to the purlin, this transfers the load into the clip and in turn to the purlin without damage strain. On top of the clips the marine grade aluminium extrusions of the walkways or platform are secured to the clips with tek screws.



WHEN INSTALLING LARGE EQUIPMENT PLATFORMS ALWAYS CHECK WITH YOUR ENGINEER TO ENSURE THE UNDERLYING STRUCTURE CAN TAKE THE WEIGHT.



HOW IT WORKS:

How the MKT roof clip **supports** the heavy loads and how it transfers it onto the purlin.

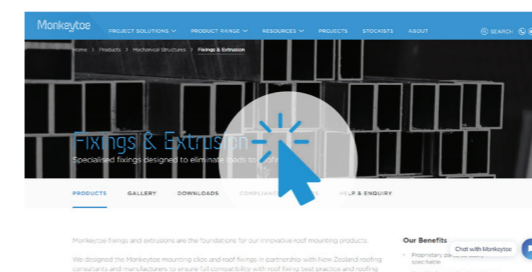
MONKEYTOE ROOF MOUNTING CLIPS AND AVOIDING LEAKS + DAMAGE

04

By not penetrating the roof and instead protecting your roof with clamping system there is no path for water. The top fix RC01 clip is designed with a special sealing washer which molds to the shape and seals across the top of the profile. To prove its performance BRANZ tested this with their hurricane simulation test and our product showed no leaks. To ensure best performance the jack studs should be installed square and the clip tightened firmly against the washer without squashing the roof profile.



By fixing to the top of the roofing profile the Monkeytoe clips keep the structure and walking people off the roof surface. This minimises damage from heavy footsteps and also provides a clear drainage passage preventing a build-up of debris which can cause leaks and corrosion. The aluminium amplimesh walking surfaces also provide a free passage to rain preventing unwashed roof surfaces which can be subject to accelerated corrosion.



Check out our website for more information and install guides.

CLICK HERE >

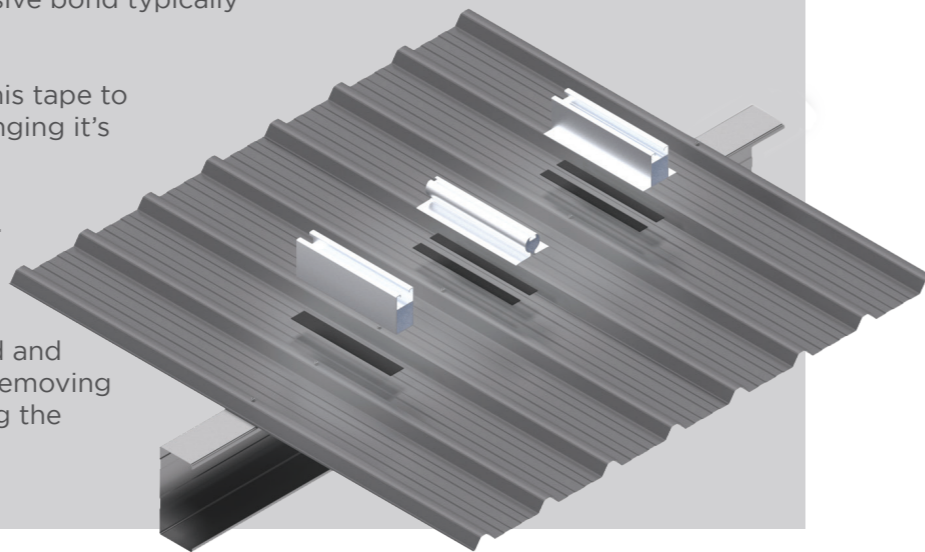
MOUNTING TO OTHER ROOF TYPES

05

For some iron types that are not suitable for fixing to such as some standing seam profiles or chiller panel Monkeytoe do have an adhesive tape fixing system that is used for specialist applications, these are designed and engineered on a case-by-case basis.

CHARACTERISTICS / ADVANTAGES

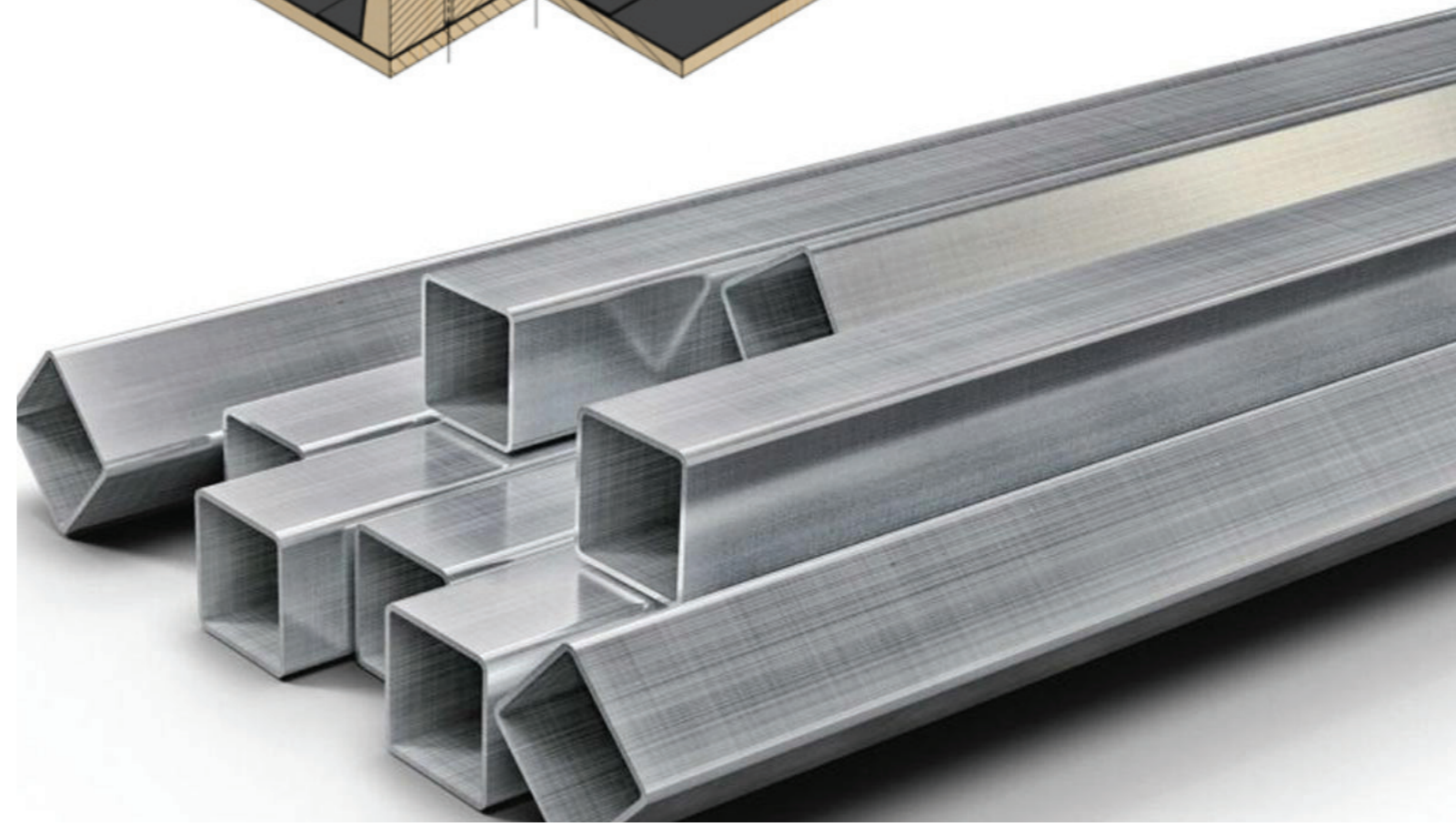
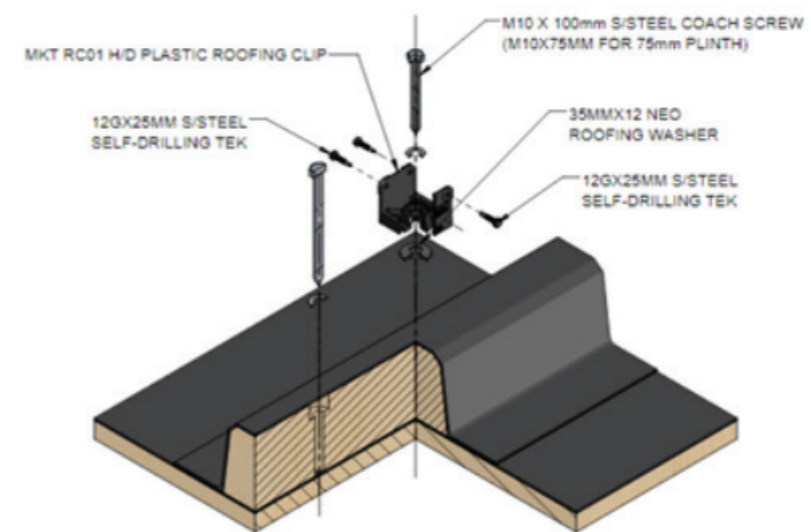
- Acrylic adhesive tapes have been used in demanding applications such as aircraft, automotive and construction industries for more than 30 years outperforming mechanical fasteners in the same applications.
- Due to its chemistry the adhesive bond typically strengthens with age.
- Adhesive technology allows this tape to lock to the surface without changing its properties.
- Non-penetrating fixing option.
- The viscoelastic nature of the tape body ensures any dynamic loads and stresses are absorbed and spread along the entire length removing high stress zones and protecting the component and bond.



MOUNTING TO A MEMBRANE ROOF

06

For secure, reliable mounting Monkeytoe always recommends mounting maintenance platforms and walkways with a plinth system. Each plinth is fixed to the roof and building structure and then has a second seal of membrane over it. For specific applications requiring low shear (side to side) loads such as earthquake securing Monkeytoe do have a tape system that can be used on single layer membranes only, not torch on bitumen based. This tape system requires custom design and is assessed for each application. For further information contact our technical support.



Download Monkeytoes adhesive tape installation guide for further information.

[CLICK HERE >](#)





Monkeytoe